

On the following pages you will find the article numbers required for inquiries and orders of the **Accessories** of our catalogue program.

You will also find drawings with the installation dimensions.

The description of the products and all technical data sheets will be available on our new website, soon.

If you have any question, are looking for a different version, or if you would like to place an order, please send an e-mail to our sales team at **sales@nocado.de**.

Please keep in mind that it's necessary that you have to define and communicate the following characteristics so that we can process your request:

1. Product type / version
2. Size
3. Material steel
4. Finish steel
5. Tube connections
6. Certificates

Instead of the a.m. characteristics you can send us the **Nocado article number**.

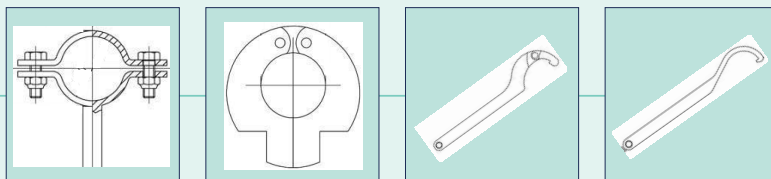
**Notice:**

All products of Nocado GmbH are under constant technical review. So, changes are reserved. Therefore, the technical data, images, and descriptions in our catalogue are therefore non-binding and exclude claims that may be derived from them.

The data in our catalogue is based on the status at the date of its publishing. Earlier catalogues become void, automatically.

All rights are reserved by Nocado GmbH. Reprints, copies, translations, and use on your websites or in your webshop, even if only partially, require the prior written approval of Nocado GmbH.

## Accessories



## 2.3 Pipe hangers, accessories, tools

### 2.3.1 Tubing supports and pipe hangers

	page
Pipe clamp without shank (for tubing according to DIN 11850) (934).....	2.3.1-1
Pipe clamp with shank (for tubing according to DIN 11850) (935).....	2.3.1-1
Pipe clamp with threaded shank (for tubing according to DIN 11850) (936).....	2.3.1-1
Pipe clamp mini, with thread M5, without shank.....	2.3.1-1
Pipe clamp without shank (for tubing in inch) (934Z).....	2.3.1-3
Pipe clamp with shank (for tubing in inch) (935Z).....	2.3.1-3
Pipe clamp without shank (for tubing in ISO) (934I).....	2.3.1-3
Pipe clamp with shank (for tubing in ISO) (935I).....	2.3.1-3
U-bolt, 8 mm (for tubing according to DIN 11850, line 1).....	2.3.1-5
U-bolt, 54 mm (for tubing according to DIN 11850, line 1) (947).....	2.3.1-5
U-bolt, 100 mm (for tubing according to DIN 11850, line 1).....	2.3.1-5

### 2.3.2 Accessories

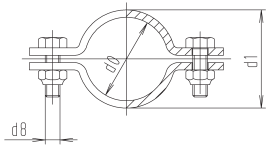
	page
Circular blank (906).....	2.3.2-1
Fixing plate, 110x50mm.....	2.3.2-1
Fixing plate, 120x120mm.....	2.3.2-1
Adhesive plug.....	2.3.2-1
Threaded rod for adhesive anchors.....	2.3.2-3
Plastic plug.....	2.3.2-3
Plug, heavy-duty.....	2.3.2-3
Wood screw, hexagonal (DIN 571).....	2.3.2-5

### 2.3.3 Tools

	page
Pipe cutting guide (951).....	2.3.3-1
Pipe expander (949).....	2.3.3-1
Ratchet for pipe expander (950).....	2.3.3-1
Expanding appliance (948).....	2.3.3-1
C-spanner with hinge (953).....	2.3.3-3
C-spanner (952).....	2.3.3-3
Scouring pads, coil.....	2.3.3-3
Wire brush (stainless steel).....	2.3.3-3

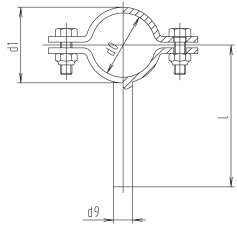


pipe clamp, without shank (for tubing in inch) (934Z)



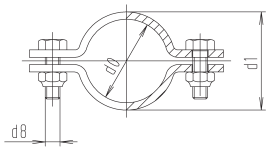
DN	d0	d1	d8	weight (kg)
1"	25.4	31.4	M6x20	0,080
1¼"	31.8	37.8	M6x20	0,090
1½"	38.1	44.1	M6x20	0,10
2"	50.8	56.8	M6x20	0,110
2½"	63.5	69.5	M6x25	0,130
3"	76.2	82.2	M6x25	0,210
4"	101.6	107.6	M6x25	0,260

pipe clamp, with shank (for tubing in inch) (935Z)



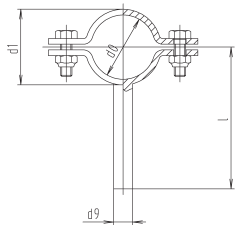
DN	d0	d1	d9	l	weight (kg)
1"	25.4	31.4	10	71	0,120
1¼"	31.8	37.8	10	74	0,120
1½"	38.1	44.1	10	77	0,140
2"	50.8	56.8	12	84	0,150
2½"	63.5	69.5	12	90	0,190
3"	76.2	82.2	12	96	0,330
4"	101.6	107.6	12	109	0,340

pipe clamp, without shank (for tubing in ISO) (934I)



DN	d0	d1	d8	weight (kg)
25	34	40	M6x20	0,100
32	42.4	48.4	M6x20	0,100
40	48.4	54.4	M6x20	0,110
50	60.4	66.4	M6x20	0,130
65	76.2	82.2	M6x25	0,150
80	89	95	M6x25	0,270
100	114.4	120.4	M6x25	0,300

pipe clamp, with shank (for tubing in ISO) (935I)



DN	d0	d1	d9	l	weight (kg)
25	34	40	10	75	0,150
32	42.4	48.4	10	79	0,150
40	48.4	54.4	10	82	0,160
50	60.4	66.4	12	88	0,180
65	76.2	82.2	12	96	0,220
80	89	95	12	103	0,390
100	114.4	120.4	12	115	0,400

t-pieces, short, DIN 11852 (for tubing acc. DIN 11850 line 2) (311IN)

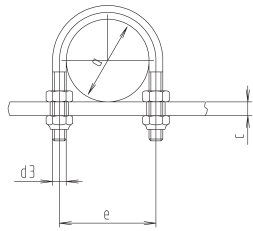
DN	304 polished		304 matt	
	Ident number	Ident number	Ident number	Ident number
1"	● 186.08.110.0000	○ 186.08.210.0000	● 186.08.210.0000	○ 186.08.210.0000
1¼"	○ 186.09.110.0000	○ 186.09.210.0000	● 186.10.110.0000	○ 186.10.210.0000
1½"	● 186.10.110.0000	○ 186.10.210.0000	● 186.11.110.0000	○ 186.11.210.0000
2"	● 186.11.110.0000	○ 186.11.210.0000	● 186.12.110.0000	○ 186.12.210.0000
2½"	● 186.12.110.0000	○ 186.12.210.0000	● 186.13.110.0000	○ 186.13.210.0000
3"	● 186.13.110.0000	○ 186.13.210.0000	● 186.15.110.0000	○ 186.15.210.0000
4"	● 186.15.110.0000	○ 186.15.210.0000		

DN	304 polished		304 matt	
	Ident number	Ident number	Ident number	Ident number
1"	● 187.08.110.0000	○ 187.08.210.0000	● 187.08.210.0000	○ 187.08.210.0000
1¼"	● 187.09.110.0000	○ 187.09.210.0000	● 187.10.110.0000	○ 187.10.210.0000
1½"	● 187.10.110.0000	○ 187.10.210.0000	● 187.11.110.0000	○ 187.11.210.0000
2"	● 187.11.110.0000	○ 187.11.210.0000	● 187.12.110.0000	○ 187.12.210.0000
2½"	● 187.12.110.0000	○ 187.12.210.0000	● 187.13.110.0000	○ 187.13.210.0000
3"	● 187.13.110.0000	○ 187.13.210.0000	● 187.15.110.0000	○ 187.15.210.0000
4"	● 187.15.110.0000	○ 187.15.210.0000		

DN	304 polished		304 matt	
	Ident number	Ident number	Ident number	Ident number
25	● 184.08.110.0012	○ 184.08.210.0012	● 184.08.210.0012	○ 184.08.210.0012
32	● 184.09.110.0012	○ 184.09.210.0012	● 184.10.110.0012	○ 184.10.210.0012
40	● 184.10.110.0012	○ 184.10.210.0012	● 184.11.110.0012	○ 184.11.210.0012
50	● 184.11.110.0012	○ 184.11.210.0012	● 184.12.110.0012	○ 184.12.210.0012
65	● 184.12.110.0012	○ 184.12.210.0012	● 184.14.110.0012	○ 184.14.210.0012
80	● 184.14.110.0012	○ 184.14.210.0012	● 184.15.110.0012	○ 184.15.210.0012
100	● 184.15.110.0012	○ 184.15.210.0012		

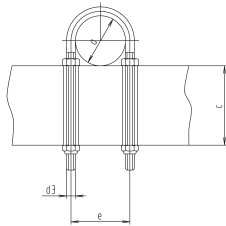
DN	304 polished		304 matt	
	Ident number	Ident number	Ident number	Ident number
25	● 185.08.110.0012	○ 185.08.210.0012	● 185.08.210.0012	○ 185.08.210.0012
32	● 185.09.110.0012	○ 185.09.210.0012	● 185.10.110.0012	○ 185.10.210.0012
40	● 185.10.110.0012	○ 185.10.210.0012	● 185.11.110.0012	○ 185.11.210.0012
50	● 185.11.110.0012	○ 185.11.210.0012	● 185.12.110.0012	○ 185.12.210.0012
65	● 185.12.110.0012	○ 185.12.210.0012	● 185.14.110.0012	○ 185.14.210.0012
80	● 185.14.110.0012	○ 185.14.210.0012	● 185.15.110.0012	○ 185.15.210.0012
100	● 185.15.110.0012	○ 185.15.210.0012		

u-bolt, 8 mm (for tubing acc. DIN 11850 line I)



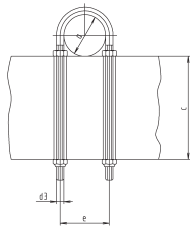
DN	a	c	d3	e	weight (kg)
10	12	8	M6	18	0,030
15	18	8	M6	24	0,030
20	22	8	M6	30	0,030
25	28	8	M6	36	0,030
32	34	8	M6	42	0,030
40	40	8	M8	50	0,060
50	52	8	M8	62	0,070
65	70	8	M8	80	0,080
80	85	8	M10	98	0,150
100	104	8	M10	117	0,180
125	129	8	M10	142	0,210
150	154	8	M12	173	0,370
200	204	8	M12	223	0,480

u-bolt, 54 mm (for tubing acc. DIN 11850 line I) (947)



DN	a	c	d3	e	weight (kg)
10	12	54	M6	18	0,050
15	18	54	M6	24	0,050
20	22	54	M6	30	0,050
25	28	54	M6	36	0,050
32	34	54	M6	42	0,050
40	40	54	M8	50	0,100
50	52	54	M8	62	0,110
65	70	54	M8	80	0,120
80	85	54	M10	98	0,220
100	104	54	M10	117	0,250
125	129	54	M10	142	0,280
150	154	54	M12	173	0,460
200	204	54	M12	223	0,570

u-bolt, 100 mm (for tubing acc. DIN 11850 line I)



DN	a	c	d3	e	weight (kg)
10	12	100	M6	18	0,050
15	18	100	M6	24	0,050
20	22	100	M6	30	0,050
25	28	100	M6	36	0,050
32	34	100	M6	42	0,050
40	40	100	M8	50	0,100
50	52	100	M8	62	0,110
65	70	100	M8	80	0,120
80	85	100	M10	98	0,220
100	104	100	M10	117	0,250
125	129	100	M10	142	0,280
150	154	100	M12	173	0,460
200	204	100	M12	223	0,570

t-pieces, short, DIN 11852 (for tubing acc. DIN 11850 line 2) (S11IN)

DN	304 polished		304 matt	
	Ident number	Ident number	Ident number	Ident number
10	○ 388.04.110.0002	○ 388.04.210.0002		
15	○ 388.06.110.0002	○ 388.06.210.0002		
20	○ 388.07.110.0002	○ 388.07.210.0002		
25	● 388.08.110.0002	● 388.08.210.0002		
32	● 388.09.110.0002	● 388.09.210.0002		
40	● 388.10.110.0002	● 388.10.210.0002		
50	● 388.11.110.0002	● 388.11.210.0002		
65	● 388.12.110.0002	○ 388.12.210.0002		
80	● 388.14.110.0002	● 388.14.210.0002		
100	● 388.15.110.0002	○ 388.15.210.0002		
125	○ 388.16.110.0002	○ 388.16.210.0002		
150	○ 388.17.110.0002	○ 388.17.210.0002		
200	○ 388.18.110.0002	○ 388.18.210.0002		

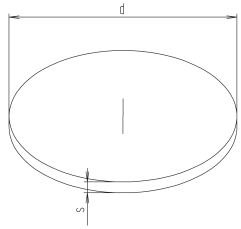
t-pieces, short, DIN 11852 (for tubing acc. DIN 11850 line 2) (S11IN)

DN	304 polished		304 matt	
	Ident number	Ident number	Ident number	Ident number
10	○ 188.04.110.0000	○ 188.04.210.0000		
15	○ 188.06.110.0000	○ 188.06.210.0000		
20	○ 188.07.110.0000	○ 188.07.210.0000		
25	● 188.08.110.0000	● 188.08.210.0000		
32	○ 188.09.110.0000	○ 188.09.210.0000		
40	● 188.10.110.0000	● 188.10.210.0000		
50	● 188.11.110.0000	● 188.11.210.0000		
65	● 188.12.110.0000	● 188.12.210.0000		
80	● 188.14.110.0000	● 188.14.210.0000		
100	● 188.15.110.0000	● 188.15.210.0000		
125	○ 188.16.110.0000	○ 188.16.210.0000		
150	● 188.17.110.0000	● 188.17.210.0000		
200	○ 188.18.110.0000	○ 188.18.210.0000		

t-pieces, short, DIN 11852 (for tubing acc. DIN 11850 line 2) (S11IN)

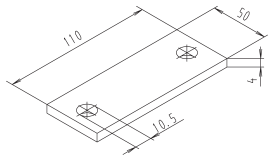
DN	304 polished		304 matt	
	Ident number	Ident number	Ident number	Ident number
10	○ 388.04.110.0000	○ 388.04.210.0000		
15	○ 388.06.110.0000	○ 388.06.210.0000		
20	○ 388.07.110.0000	○ 388.07.210.0000		
25	● 388.08.110.0000	● 388.08.210.0000		
32	○ 388.09.110.0000	○ 388.09.210.0000		
40	○ 388.10.110.0000	○ 388.10.210.0000		
50	● 388.11.110.0000	● 388.11.210.0000		
65	● 388.12.110.0000	● 388.12.210.0000		
80	● 388.14.110.0000	● 388.14.210.0000		
100	● 388.15.110.0000	● 388.15.210.0000		
125	● 388.16.110.0000	● 388.16.210.0000		
150	○ 388.17.110.0000	○ 388.17.210.0000		
200	○ 388.18.110.0000	○ 388.18.210.0000		

circular blank (906)



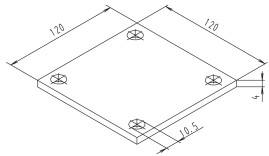
DN	d	s	weight (kg)
25	28	1.5	0,010
32	34	1.5	0,010
40	40	1.5	0,020
50	52	1.5	0,030
65	70	1.5	0,050
80	88	1.5	0,070
110	110	1.5	0,110
125	128	2	0,200
150	150	2	0,280
165	165	3	0,510
210	210	3	0,820
250	250	3	1,160

fixing plate 110x50



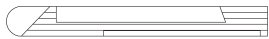
DN	weight (kg)
-	0,173

fixing plate 120x120



DN	weight (kg)
-	0,455

adhesive plug



DN	borehole	drill depth	weight (kg)
M8	10	80	0,013
M10	12	90	0,016
M12	14	110	0,025
M14	16	120	0,027
M16	18	125	0,074
M24	28	210	0,195

t-pieces, short, DIN 11852 (for rubbing acc. DIN 11850 line 2) (311IN)

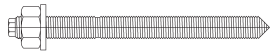
DN	304 polished Ident number	304 metall-blank Ident number
25	○ 181.08.110.0005	○ 181.08.210.0005
32	○ 181.09.110.0005	○ 181.09.210.0005
40	○ 181.10.110.0005	○ 181.10.210.0005
50	○ 181.11.110.0005	○ 181.11.210.0005
65	○ 181.12.110.0005	○ 181.12.210.0005
80	○ 181.14.110.0005	○ 181.14.210.0005
110	○ 181.15.110.0006	○ 181.15.210.0006
125	○ 181.16.110.0005	○ 181.16.210.0005
150	○ 181.17.110.0005	○ 181.17.210.0005
165	○ 181.17.110.0007	○ 181.17.210.0007
210	○ 181.18.110.0008	○ 181.18.210.0008
250	○ 181.19.110.0005	○ 181.19.210.0005

DN	304 matt Ident number
-	○ 181.00.210.0022

DN	304 matt Ident number
-	○ 181.00.210.0021

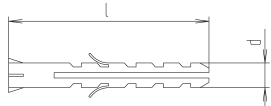
DN	Ident number
M8	○ 849.08.6G0.0597
M10	○ 849.10.6G0.0597
M12	○ 849.12.6G0.0597
M14	○ 849.14.6G0.0597
M16	○ 849.16.6G0.0597
M24	○ 849.24.6G0.0597

threaded rod for adhesive anchors



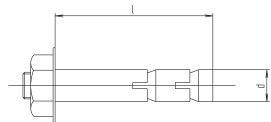
DN	borehole	drill depth	max. Klemml.	weight (kg)
M8	10	80	20	0,043
M10	12	90	15	0,073
M10	12	90	30	0,081
M10	12	90	65	0,098
M10	12	90	90	0,111
M12	14	110	10	0,119
M12	14	110	35	0,137
M12	14	110	55	0,151
M12	14	110	85	0,173
M12	14	110	95	0,182
M12	14	110	125	0,202
M12	14	110	175	0,283
M14	16	120	35	0,191
M16	18	125	5	0,238
M16	18	125	20	0,277
M16	18	125	45	0,296
M16	18	125	65	0,320
M16	18	125	85	0,365
M16	18	125	105	0,391
M16	18	125	155	0,458
M20	25	170	20	0,315
M20	25	170	60	0,366
M20	25	170	100	0,416
M24	28	240	15	1,070
M24	28	240	55	1,070

plastic plug



DN	d	l	weight (kg)
6	6	30	-
8	8	40	-
10	10	50	-
12	12	60	-
14	14	70	-
16	16	80	-
20	20	90	-

plug, heavy-duty



DN	d	l	weight (kg)
8	8	15	-
10	10	45	-
10	10	140	-
12	12	55	-

threaded rod for adhesive anchors

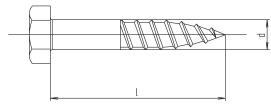
t-pieces, short, DIN 11852 (for rubbing acc. DIN 11850 line 2) (S111N)

DN	A4 Ident number
M8	○ 849.08.620.0598
M10	○ 849.08.620.0599
M10	○ 849.08.620.0600
M10	○ 849.08.620.0601
M10	○ 849.08.620.0602
M12	○ 849.08.620.0603
M12	○ 849.08.620.0604
M12	○ 849.08.620.0605
M12	○ 849.08.620.0606
M12	○ 849.08.620.0607
M12	○ 849.08.620.0608
M12	○ 849.08.620.0609
M14	○ 849.08.620.0610
M16	○ 849.08.620.0611
M16	○ 849.08.620.0612
M16	○ 849.08.620.0613
M16	○ 849.08.620.0614
M16	○ 849.08.620.0615
M16	○ 849.08.620.0616
M16	○ 849.08.620.0617
M20	○ 849.08.620.0618
M20	○ 849.08.620.0619
M20	○ 849.08.620.0620
M24	○ 849.08.620.0621
M24	○ 849.08.620.0622

DN	plastic Ident number
6	○ 725.00.9X0.0030
8	○ 725.00.9X0.0031
10	○ 725.00.9X0.0032
12	○ 725.00.9X0.0033
14	○ 725.00.9X0.0034
16	○ 725.00.9X0.0035
20	○ 725.00.9X0.0036

DN	steel, galvanized Ident number
8	○ 849.03.610.0590
10	○ 849.03.610.0591
10	○ 849.04.610.0592
12	○ 849.05.610.0593

wood screw, hexagonal, DIN 571



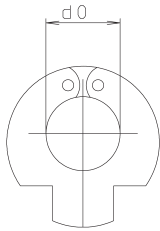
DN	d	l	weight (kg)
5	5	30	-
6	6	50	-
6	6	60	-
8	8	50	-
8	8	60	-
10	10	50	-
10	10	60	-
12	12	60	-
12	12	80	-

t-pieces, short, DIN 11852 (for tubing acc. DIN 11850 line 2) (311IN)

DN	stainless steel / A2 Ident number
5	○ 849.02.610.0002
6	○ 849.03.610.0011
6	○ 849.04.610.0015
8	○ 849.05.610.0019
8	○ 849.05.610.0023
10	○ 849.05.610.0032
10	○ 849.05.610.0036
10	○ 849.05.610.0040
12	○ 849.05.610.0048
12	○ 849.05.610.0052

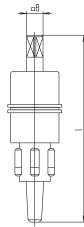


pipe cutting guide (951)



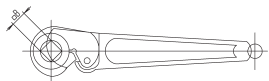
DN	d0 DIN	d0 DIN R2	d0 inch	d0 ISO	weight (kg)
10	12	13	-	17.3	0,600
15	18	19	-	21.3	0,600
20	22	23	-	26.9	0,600
25 / 1"	28	29	1"	33.7	0,700
32 / 1¼"	34	35	1¼"	42.4	0,700
40 / 1½"	40	41	1½"	48.3	0,900
50 / 2"	52	53	2"	60.3	1,000
65 / 2½"	-	70	2½"	76	1,900
80 / 3"	-	85	3"	88.9	2,100
100 / 4"	-	104	4"	-	2,600

pipe expander (949)



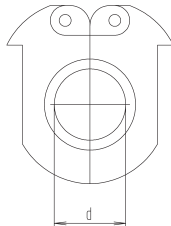
DN	b	l	weight (kg)
10	8	118	0,350
15	8	129	0,370
20	8	140	0,380
25 / 1"	12	159	0,700
32 / 1¼"	12	171	1,050
40 / 1½"	14	176	1,540
50 / 2"	14	180	2,370
65 / 2½"	16	205	4,150
80 / 3"	22	238	7,900
100 / 4"	22	240	10,500

ratchet for pipe expander (950)



DN	b	weight (kg)
10-20	8	0,100
25-32	12	0,300
40-50	14	0,300
65	16	0,420
80-100	22	0,630

expanding appliance (948)



DN	d DIN	d SMS	weight (kg)
10	12	-	1,100
15	18	-	1,100
20	22	-	1,100
25 / 1"	28	25.4	1,200
32 / 1¼"	34	31.8	1,100
40 / 1½"	40	38.1	1,300
50 / 2"	52	50.8	1,700
65 / 2½"	70	63.5	2,200
80 / 3"	85	76.2	2,600
100 / 4"	104	101.6	3,900

t-pieces, short, DIN 11852 (for tubing acc. DIN 11850 line 2) (S11IN)

DN	DIN Ident number	DIN 11851 Reihe 2 Ident number	Zoll Ident number	ISO Ident number
10	● 899.04.6X0.0003	○ 899.04.6X0.0030	-	-
15	● 899.06.6X0.0003	○ 899.06.6X0.0030	-	-
20	● 899.07.6X0.0003	○ 899.07.6X0.0030	-	-
25 / 1"	● 899.08.6X0.0003	○ 899.08.6X0.0030	● 899.08.6X0.0005	○ 899.08.6X0.0042
32 / 1¼"	● 899.09.6X0.0003	○ 899.09.6X0.0030	○ 899.09.6X0.0005	○ 899.09.6X0.0042
40 / 1½"	● 899.10.6X0.0003	○ 899.10.6X0.0030	● 899.10.6X0.0005	○ 899.10.6X0.0042
50 / 2"	● 899.11.6X0.0003	○ 899.11.6X0.0030	● 899.11.6X0.0005	○ 899.11.6X0.0042
65 / 2½"	● 899.12.6X0.0003	-	-	○ 899.12.6X0.0042
80 / 3"	● 899.14.6X0.0003	-	-	○ 899.14.6X0.0042
100 / 4"	● 899.15.6X0.0003	-	-	-

DN	DIN Ident number	Zoll Ident number
10	● 899.04.6X0.0001	-
15	● 899.06.6X0.0001	-
20	● 899.07.6X0.0001	-
25 / 1"	● 899.08.6X0.0001	● 899.08.6X0.0006
32 / 1¼"	● 899.09.6X0.0001	● 899.09.6X0.0006
40 / 1½"	● 899.10.6X0.0001	● 899.10.6X0.0006
50 / 2"	● 899.11.6X0.0001	● 899.11.6X0.0006
65 / 2½"	● 899.12.6X0.0001	● 899.12.6X0.0006
80 / 3"	● 899.14.6X0.0001	○ 899.14.6X0.0006
100 / 4"	○ 899.15.6X0.0001	○ 899.15.6X0.0006

DN	Ident number
10-20	○ 899.04.6X0.0002
25-32	● 899.08.6X0.0002
40-50	● 899.10.6X0.0002
65	○ 899.12.6X0.0002
80-100	○ 899.14.6X0.0002

DN	DIN Ident number	SMS Ident number
10	○ 899.04.6X0.0066	-
15	○ 899.06.6X0.0066	-
20	○ 899.07.6X0.0066	-
25 / 1"	○ 899.08.6X0.0066	○ 899.08.6X0.0049
32 / 1¼"	○ 899.09.6X0.0066	○ 899.09.6X0.0049
40 / 1½"	○ 899.10.6X0.0066	○ 899.10.6X0.0049
50 / 2"	○ 899.11.6X0.0066	○ 899.11.6X0.0049
65 / 2½"	○ 899.12.6X0.0066	○ 899.12.6X0.0049
80 / 3"	○ 899.14.6X0.0066	○ 899.14.6X0.0049
100 / 4"	○ 899.15.6X0.0066	-

c-spanner with hinge (953)



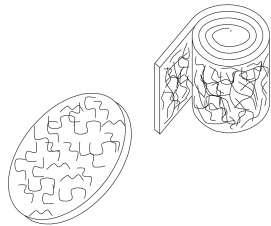
DN	weight (kg)
10-20	0,090
25-40	0,290
50-80	0,440
100-150	1,150

c-spanner (952)



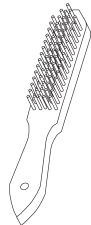
DN	l	weight (kg)
25-65	300	0,410
80-100	400	0,460
125	575	3,530
150	610	4,500

scouring pads, coil



DN	weight (kg)
115	-
10 m	-

stainless steel wire brush



DN	weight (kg)
4-reihig	-
5-reihig	-

t-pieces, short, DIN 11852 (for rubbing acc. DIN 11850 line 2) (S11IN)

DN	steel nicklelized Ident number	304 Ident number
10-20	○ 899.04.6X0.0004	○ 899046100004
25-40	● 899.08.6X0.0004	○ 899086100004
50-80	○ 899.11.6X0.0004	○ 899116100004
100-150	○ 899.15.6X0.0004	○ 899156100004

t-pieces, short, DIN 11852 (for rubbing acc. DIN 11850 line 2) (S11IN)

DN	304 polished Ident number
25-65	● 189.08.110.0000
80-100	● 189.14.110.0000
125	● 189.16.110.0000
150	● 189.17.110.0000

t-pieces, short, DIN 11852 (for rubbing acc. DIN 11850 line 2) (S11IN)

DN	Ident number
115	○ 897.00.690.0001
10 m	○ 897.00.690.0125

t-pieces, short, DIN 11852 (for rubbing acc. DIN 11850 line 2) (S11IN)

DN	wood / stainlss steel Ident number
4-reihig	○ 897.04.620.0002
5-reihig	○ 897.05.620.0002