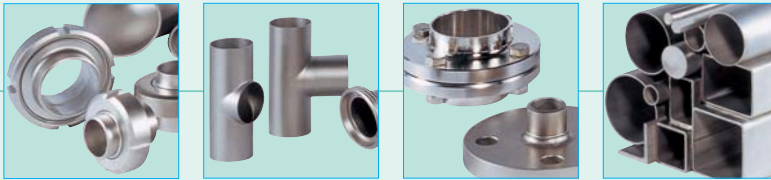


Fittings



On the following pages you will find the article numbers required for inquiries and orders of the **Fittings** of our catalogue program.

You will also find drawings with the installation dimensions.

The description of the products and all technical data sheets will be available on our new website, soon.

If you have any question, are looking for a different version, or if you would like to place an order, please send an e-mail to our sales team at **sales@nocado.de**.

Please keep in mind that it's necessary that you have to define and communicate the following characteristics so that we can process your request:

1. Product type / version
2. Size
3. Material steel
4. Finish steel
5. Tube connections
6. Certificates

Instead of the a.m. characteristics you can send us the **Nocado article number**.

Notice:

All products of Nocado GmbH are under constant technical review. So, changes are reserved. Therefore, the technical data, images, and descriptions in our catalogue are therefore non-binding and exclude claims that may be derived from them.

The data in our catalogue is based on the status at the date of its publishing. Earlier catalogues become void, automatically.

All rights are reserved by Nocado GmbH. Reprints, copies, translations, and use on your websites or in your webshop, even if only partially, require the prior written approval of Nocado GmbH.

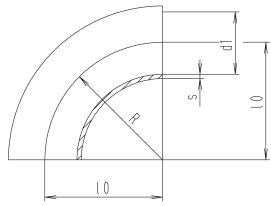
2.1.2 Bends	page
Welding bend 90°, DIN 11852 (for tubing according to DIN 11850, line 2) (422N).....	2.1.2-1
Welding bend 90°, DIN 11852 (for tubing according to DIN 11850, line 2) (422N).....	2.1.2-1
Welding bend 90°, long, DIN 11852 (for tubing according to DIN 11850, line 2) (422N).....	2.1.2-1
Welding bend 90°, 5D-type (for tubing according to DIN 11850, line 2) (422B).....	2.1.2-1
Welding bend 90°, with heating jacket (for tubing according to DIN 11850, line 2).....	2.1.2-3
Welding bend 45°, DIN 11852 (for tubing according to DIN 11850, line 2) (422A).....	2.1.2-3
Welding bend 45°, long, DIN 11852 (for tubing according to DIN 11850 line 2) (422A).....	2.1.2-3
Welding bend 180°, DIN 11852-BS (for tubing according to DIN 11850 line 2) (486).....	2.1.2-3
Welding bend 90°, DIN 11852 (for tubing similar DIN 11850) (422).....	2.1.2-5
Welding bend 90°, DIN 11852 (for tubing similar DIN 11850) (422).....	2.1.2-5
Bend 90°, expanding ends 1,5 mm DIN (for tub. similar DIN 11850) (433).....	2.1.2-5
Welding bend 90°, 5D-type, (for tubing similar DIN 11850) (422B).....	2.1.2-5
Welding bend 45°, DIN 11852 (for tubing similar DIN 11850) (422A).....	2.1.2-7
Welding bend 180°, DIN 11852 (for tubing similar DIN 11850) (486).....	2.1.2-7
Welding bend 90°, 1,5D, long, inch (422Z).....	2.1.2-7
Welding bend 90°, 2,0D, long (version IIA), inch.....	2.1.2-7
Welding bend 45°, inch.....	2.1.2-9
Welding bend 180° inch (486Z).....	2.1.2-9
Welding bend 90°, 1,0D, SMS (433S).....	2.1.2-9
Welding bend 90°, 1,5D, short, SMS (433S).....	2.1.2-9
Welding bend 90°, 1,5D, long, SMS (433S).....	2.1.2-11
Welding bend 90°, 2,0D, long, SMS.....	2.1.2-11
Bend 90°, male/weld end, (for tubing similar DIN 11850) (452).....	2.1.2-11
Bend 90°, liner/weld end, DIN 11851 (for tubing similar DIN 11850) (462).....	2.1.2-11
Bend 90°, hose spout / weld end, (for tubing similar to DIN 11850, line 1) (436).....	2.1.2-13
Bend 90°, male/liner, DIN (456).....	2.1.2-13
Bend 90°, liner/liner, DIN 11851 (466).....	2.1.2-13
Bend 90°, liner/reduced male, DIN 11851 (482).....	2.1.2-13
Bend 90°, clamp/clamp, DIN (444).....	2.1.2-15
Bend 90°, clamp/clamp, DIN (444).....	2.1.2-15
Bend 90°, clamp/clamp, inch OD (444Z).....	2.1.2-15
Bend 90°, clamp/clamp, inch OD (444Z).....	2.1.2-15
Switch bend, 180°, DIN 11851 liner/liner.....	2.1.2-17
Switch bend, 180°, DIN 11851 liner/liner, with switching rod.....	2.1.2-17

2.1.3 T-pieces, T-bends, Crosses	page
T-pieces, short, DIN 11852 (for tubing according to DIN 11850, line 2) (5111N).....	2.1.3-1
T-pieces, weld ends, DIN 11852 (for tubing according to DIN 11850, line 2) (5222N).....	2.1.3-1
T-pieces, short, DIN 11852 (for tubing according to DIN 11850, line 2) (5111N).....	2.1.3-1
T-pieces, weld ends, DIN 11852 (for tubing according to DIN 11850, line 2) (5222N).....	2.1.3-1
T-pieces, with heating jacket (for tubing according to DIN 11850, line 2).....	2.1.3-3
T-pieces, short, red, DIN 11852 (for tubing according to DIN 11850, line 2) (5227N).....	2.1.3-3
T-pieces, reduced, DIN 11852 (for tub. according to DIN 11850, line 2) (5228N).....	2.1.3-5
T-pieces, short, (for tubing similar DIN 11850) (5111).....	2.1.3-5
T-pieces (for tubing similar DIN 11850).....	2.1.3-5
T-pieces, short, (for tubing similar DIN 11850) (5111).....	2.1.3-7
T-pieces, (for tubing similar DIN 11850).....	2.1.3-7
T-pieces, short, reduced (for tubing similar DIN 11850) (5227).....	2.1.3-7
T-pieces, reduced (for tubing similar DIN 11850) (5228).....	2.1.3-9
T-pieces, short, inch (5111Z).....	2.1.3-9
T-pieces inch (5222Z).....	2.1.3-9
T-pieces, short, SMS (5111S).....	2.1.3-11
T-pieces, SMS (5222S).....	2.1.3-11
T-bend (for tubing according to DIN 11850, line 2) (572N).....	2.1.3-11
Y-joint for tubing according to DIN 11850, line 2) (574N).....	2.1.3-13
T-bend (for tubing similar DIN 11850) (572).....	2.1.3-13
Y-joint (for tubing similar DIN 11850) (574).....	2.1.3-13
Y-bend, inch (572Z).....	2.1.3-13
Y-joint, inch (574Z).....	2.1.3-15
T-bend, SMS (572S).....	2.1.3-15
Y-joint, SMS (574S).....	2.1.3-15
Cross, short (for tubing according to DIN 11850 line 2) (577N).....	2.1.3-15
Cross, long (for tubing according to DIN 11850 line 2) (576N).....	2.1.3-17
Cross, short (for tubing similar DIN 11850) (577).....	2.1.3-17
Cross, long (for tubing similar DIN 11850) (576).....	2.1.3-17

2.1.4 Reducers, adapters	page
Reducer, concentric, DIN 11852 (for tubing according to DIN 11850, line 2) (322).....	2.1.4-1
Reducer, concentric, DIN 11852 (for tubing according to DIN 11850, line 2) (322).....	2.1.4-3
Reducer, eccentric, DIN 11852 (for tubing according to DIN 11850, line 2) (322ex).....	2.1.4-5
Reducer, eccentric, DIN 11852 (for tubing according to DIN 11850, line 2) (322ex).....	2.1.4-5
Reducer, concentric, inch (322Z).....	2.1.4-5
Reducer, concentric, inch (322Z).....	2.1.4-7
Reducer, eccentric, inch (322zex).....	2.1.4-7
Reducer, concentric, male/liner, DIN (356).....	2.1.4-7
Reducer, concentric, liner/male, DIN (365).....	2.1.4-9
Reducer, concentric, liner/liner, DIN (366).....	2.1.4-9
Adapter, male/male, DIN 11851 (370).....	2.1.4-9
Adapter, male/liner, DIN 11851 (371).....	2.1.4-9
Adapter, liner/liner, DIN 11851 (372).....	2.1.4-11

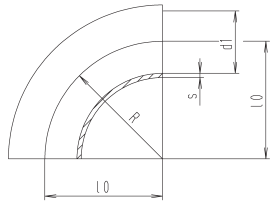
2.1.5 Convex bottoms	page
Convex bottom, DIN 28011 (for tubing according to DIN 11850, line 2) (904).....	2.1.5-1
Convex bottom, DIN 28011 (for tubing according to DIN 11850, line 2) (904).....	2.1.5-1
Convex bottom, DIN 28011 (for tubing similar DIN 11850) (904).....	2.1.5-1
Convex bottom, DIN 28011 (for tubing similar DIN 11850) (904).....	2.1.5-1
Convex bottom, DIN 28011 inch (904Z).....	2.1.5-3
Convex bottom, DIN 28011 ISO (904I).....	2.1.5-3
Rosette (for tubing similar DIN 11850, line 1) (901).....	2.1.5-3
Cover for tubing, high (for tubing similar DIN 11850, line 1) (902).....	2.1.5-3

welding bend 90°, DIN 11852 (for tubing acc. DIN 11850 line 2) (422N)



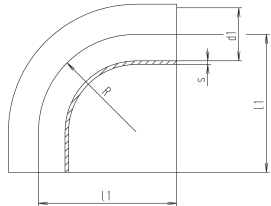
DN	dl	l0	s	R	weight (kg)
10	10	26	1.5	26	0,020
15	16	35	1.5	35	0,040
20	20	40	1.5	40	0,060
25	26	50	1.5	50	0,085
32	32	55	1.5	55	0,110
40	38	60	1.5	60	0,135
50	50	70	1.5	70	0,220
65	66	80	2	80	0,400
80	81	90	2	90	0,570
100	100	100	2	100	0,760
125	125	187.5	2	187.5	1,780
150	150	225	2	225	2,750
200	200	300	2	300	4,750
250	250	375	2	375	7,500

welding bend 90°, DIN 11852 (for tubing acc. DIN 11850 line 2) (422N)



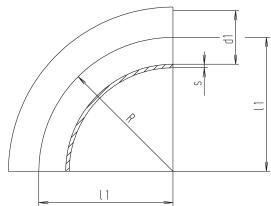
DN	dl	l0	s	R	weight (kg)
10	10	26	1.5	26	0,020
15	16	35	1.5	35	0,040
20	20	40	1.5	40	0,060
25	26	50	1.5	50	0,085
32	32	55	1.5	55	0,110
40	38	60	1.5	60	0,135
50	50	70	1.5	70	0,220
65	66	80	2	80	0,400
80	81	90	2	90	0,570
100	100	100	2	100	0,760
125	125	187.5	2	187.5	1,780
150	150	225	2	225	2,750
200	200	300	2	300	4,750
250	250	375	2	375	7,500

welding bend 90°, long, DIN 11852 (for tub. acc. DIN 11850 line 2) (422N)



DN	dl	l1	R	s	weight (kg)
10	10	51	26	1.5	0,040
15	16	60	35	1.5	0,070
20	20	65	40	1.5	0,090
25	26	90	50	1.5	0,160
32	32	95	55	1.5	0,210
40	38	100	60	1.5	0,255
50	50	110	70	1.5	0,365
65	66	120	80	2	0,700
80	81	145	90	2	1,050
100	100	155	100	2	1,360
125	125	245	187.5	2	2,600

welding bend 90°, 5D-type (for tubing acc. DIN 11850 line 2) (422B)



DN	dl	l1	R	s	weight (kg)
25	26	65	65	1.5	0,145
32	32	75	75	1.5	0,150
40	38	95	95	1.5	0,295
50	50	125	125	1.5	0,380
65	66	160	160	2	0,855
80	81	200	200	2	1,300
100	100	250	250	2	2,000
125	125	313	313	2	3,100

t-pieces, short, DIN 11852 (for tubing acc. DIN 11850 line 2) (311IN)

DN	304 polished		304 matt		316 L polished		316 L matt	
	Ident number	Ident number	Ident number	Ident number	Ident number	Ident number	Ident number	
10	● 141.04.110.0010	○ 141.04.210.0010	● 141.04.120.0010	○ 141.04.220.0010				
15	● 141.06.110.0010	○ 141.06.210.0010	● 141.06.120.0010	○ 141.06.220.0010				
20	● 141.07.110.0010	○ 141.07.210.0010	● 141.07.120.0010	○ 141.07.220.0010				
25	● 141.08.110.0010	○ 141.08.210.0010	● 141.08.120.0010	○ 141.08.220.0010				
32	● 141.09.110.0010	○ 141.09.210.0010	● 141.09.120.0010	○ 141.09.220.0010				
40	● 141.10.110.0010	○ 141.10.210.0010	● 141.10.120.0010	○ 141.10.220.0010				
50	● 141.11.110.0010	○ 141.11.210.0010	● 141.11.120.0010	○ 141.11.220.0010				
65	● 141.12.110.0000	○ 141.12.210.0000	● 141.12.120.0000	○ 141.12.220.0000				
80	● 141.14.110.0000	○ 141.14.210.0000	● 141.14.120.0000	○ 141.14.220.0000				
100	● 141.15.110.0000	○ 141.15.210.0000	● 141.15.120.0000	○ 141.15.220.0000				
125	● 141.16.110.0000	○ 141.16.210.0000	● 141.16.120.0000	○ 141.16.220.0000				
150	● 141.17.110.0000	○ 141.17.210.0000	● 141.17.120.0000	○ 141.17.220.0000				
200	● 141.18.110.0000	○ 141.18.210.0000	● 141.18.120.0000	○ 141.18.220.0000				
250	○ 141.19.110.0000	● 141.19.210.0000	○ 141.19.120.0000	● 141.19.220.0000				

t-pieces, short, DIN 11852 (for tubing acc. DIN 11850 line 2) (311IN)

DN	316 L polished		316 L matt	
	Ident number	Ident number	Ident number	Ident number
10	○ 141.04.120.0310	○ 141.04.220.0310		
15	○ 141.06.120.0310	○ 141.06.220.0310		
20	○ 141.07.120.0310	○ 141.07.220.0310		
25	○ 141.08.120.0310	○ 141.08.220.0310		
32	○ 141.09.120.0310	○ 141.09.220.0310		
40	○ 141.10.120.0310	○ 141.10.220.0310		
50	○ 141.11.120.0310	○ 141.11.220.0310		
65	○ 141.12.120.0300	○ 141.12.220.0300		
80	○ 141.14.120.0300	○ 141.14.220.0300		
100	○ 141.15.120.0300	○ 141.15.220.0300		
125	○ 141.16.120.0300	○ 141.16.220.0300		
150	○ 141.17.120.0300	○ 141.17.220.0300		
200	○ 141.18.120.0300	○ 141.18.220.0300		
250	○ 141.19.120.0300	○ 141.19.220.0300		

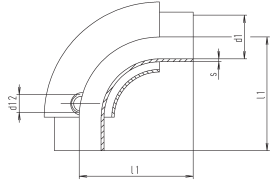
t-pieces, short, DIN 11852 (for tubing acc. DIN 11850 line 2) (311IN)

DN	304 polished		304 matt		316 L polished		316 L matt	
	Ident number	Ident number	Ident number	Ident number	Ident number	Ident number	Ident number	
10	○ 141.04.110.0015	○ 141.04.210.0015	○ 141.04.120.0015	○ 141.04.220.0015				
15	○ 141.06.110.0015	○ 141.06.210.0015	○ 141.06.120.0015	○ 141.06.220.0015				
20	○ 141.07.110.0015	○ 141.07.210.0015	○ 141.07.120.0015	○ 141.07.220.0015				
25	○ 141.08.110.0015	○ 141.08.210.0015	○ 141.08.120.0015	○ 141.08.220.0015				
32	○ 141.09.110.0015	○ 141.09.210.0015	○ 141.09.120.0015	○ 141.09.220.0015				
40	○ 141.10.110.0015	○ 141.10.210.0015	○ 141.10.120.0015	○ 141.10.220.0015				
50	○ 141.11.110.0015	○ 141.11.210.0015	○ 141.11.120.0015	○ 141.11.220.0015				
65	○ 141.12.110.0015	○ 141.12.210.0015	○ 141.12.120.0015	○ 141.12.220.0015				
80	○ 141.14.110.0015	○ 141.14.210.0015	○ 141.14.120.0015	○ 141.14.220.0015				
100	○ 141.15.110.0015	○ 141.15.210.0015	○ 141.15.120.0015	○ 141.15.220.0015				
125	○ 141.16.110.0015	○ 141.16.210.0015	○ 141.16.120.0015	○ 141.16.220.0015				

t-pieces, short, DIN 11852 (for tubing acc. DIN 11850 line 2) (311IN)

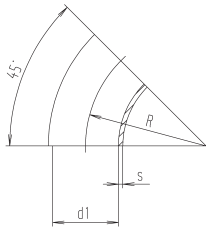
DN	304 polished		304 matt		316 L polished		316 L matt	
	Ident number	Ident number	Ident number	Ident number	Ident number	Ident number	Ident number	
25	○ 141.08.110.0018	○ 141.08.210.0018	○ 141.08.120.0018	○ 141.08.220.0018				
32	○ 141.09.110.0018	○ 141.09.210.0018	○ 141.09.120.0018	○ 141.09.220.0018				
40	○ 141.10.110.0018	○ 141.10.210.0018	○ 141.10.120.0018	○ 141.10.220.0018				
50	○ 141.11.110.0018	○ 141.11.210.0018	○ 141.11.120.0018	○ 141.11.220.0018				
65	● 141.12.110.0012	● 141.12.210.0012	● 141.12.120.0012	● 141.12.220.0012				
80	● 141.14.110.0012	● 141.14.210.0012	● 141.14.120.0012	● 141.14.220.0012				
100	● 141.15.110.0012	● 141.15.210.0012	● 141.15.120.0012	● 141.15.220.0012				
125	○ 141.16.110.0012	○ 141.16.210.0012	○ 141.16.120.0012	○ 141.16.220.0012				

welding bend 90°, with heating jacket (for tub. acc. DIN 11850 line 2)



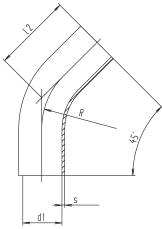
DN	d1	d12	l1	s	weight (kg)
25	26	R 1/2"	90	1.5	0,350
32	32	R 1/2"	95	1.5	0,430
40	38	R 1/2"	100	1.5	0,560
50	50	R 1/2"	110	1.5	0,850
65	66	R 3/4"	120	2	1,400
80	81	R 3/4"	145	2	2,100

welding bend 45°, DIN 11852 (for tubing acc. DIN 11850 line 2) (422A)



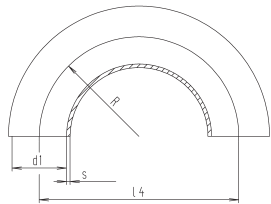
DN	d1	R	s	weight (kg)
10	10	26	1.5	0,010
15	16	35	1.5	0,020
20	20	40	1.5	0,030
25	26	50	1.5	0,043
32	32	55	1.5	0,055
40	38	60	1.5	0,070
50	50	70	1.5	0,110
65	66	80	2	0,200
80	81	90	2	0,250
100	100	100	2	0,380
125	125	187.5	2	0,890
150	150	225	2	1,400

welding bend 45°, long, DIN 11852 (for tubing acc. DIN 11850 line 2) (422A)



DN	d1	l2	R	s	weight (kg)
10	10	35.8	26	1.5	0,031
15	16	39.5	35	1.5	0,045
20	20	41.6	40	1.5	0,062
25	26	60.7	50	1.5	0,120
32	32	62.8	55	1.5	0,150
40	38	64.9	60	1.5	0,185
50	50	69	70	1.5	0,265
65	66	73.1	80	2	0,490
80	81	92.3	90	2	0,750
100	100	96.4	100	2	0,970
125	125	135.2	187.5	2	1,630

welding bend 180°, DIN 11852-BS (for tubing acc. DIN 11850 line 2) (486)



DN	d1	l4	R	s	weight (kg)
10	10	52	26	1.5	0,040
15	16	70	35	1.5	0,080
20	20	80	40	1.5	0,110
25	26	100	50	1.5	0,170
32	32	110	55	1.5	0,240
40	38	120	60	1.5	0,300
50	50	140	70	1.5	0,440
65	66	160	80	2	0,890
80	81	180	90	2	1,220
100	100	200	100	2	1,640
125	125	375	187.5	2	3,760
150	150	450	225	2	5,500

t-pieces, short, DIN 11852 (for tubing acc. DIN 11850 line 2) (311IN)

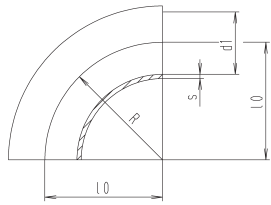
DN	1.4301 matt		316 L matt	
	Ident number	Ident number	Ident number	Ident number
25	○ 141.08.210.0019	○ 141.08.220.0019	○ 141.08.220.0019	○ 141.08.220.0019
32	○ 141.09.210.0019	○ 141.09.220.0019	○ 141.09.220.0019	○ 141.09.220.0019
40	○ 141.10.210.0019	○ 141.10.220.0019	○ 141.10.220.0019	○ 141.10.220.0019
50	○ 141.11.210.0019	○ 141.11.220.0019	○ 141.11.220.0019	○ 141.11.220.0019
65	○ 141.12.210.0019	○ 141.12.220.0019	○ 141.12.220.0019	○ 141.12.220.0019
80	○ 141.14.210.0019	○ 141.14.220.0019	○ 141.14.220.0019	○ 141.14.220.0019

DN	304 polished		304 matt		316 L polished		316 L matt	
	Ident number	Ident number	Ident number	Ident number	Ident number	Ident number	Ident number	Ident number
10	○ 141.04.110.0013	○ 141.04.210.0013	○ 141.04.120.0013	○ 141.04.220.0013	○ 141.04.120.0013	○ 141.04.220.0013	○ 141.04.220.0013	○ 141.04.220.0013
15	● 141.06.110.0013	○ 141.06.210.0013	● 141.06.120.0013	○ 141.06.220.0013	● 141.06.120.0013	○ 141.06.220.0013	○ 141.06.220.0013	○ 141.06.220.0013
20	● 141.07.110.0013	○ 141.07.210.0013	● 141.07.120.0013	○ 141.07.220.0013	● 141.07.120.0013	○ 141.07.220.0013	○ 141.07.220.0013	○ 141.07.220.0013
25	● 141.08.110.0013	○ 141.08.210.0013	● 141.08.120.0013	○ 141.08.220.0013	● 141.08.120.0013	○ 141.08.220.0013	○ 141.08.220.0013	○ 141.08.220.0013
32	○ 141.09.110.0013	○ 141.09.210.0013	○ 141.09.120.0013	○ 141.09.220.0013	○ 141.09.120.0013	○ 141.09.220.0013	○ 141.09.220.0013	○ 141.09.220.0013
40	● 141.10.110.0013	○ 141.10.210.0013	● 141.10.120.0013	○ 141.10.220.0013	● 141.10.120.0013	○ 141.10.220.0013	○ 141.10.220.0013	○ 141.10.220.0013
50	● 141.11.110.0013	○ 141.11.210.0013	● 141.11.120.0013	○ 141.11.220.0013	● 141.11.120.0013	○ 141.11.220.0013	○ 141.11.220.0013	○ 141.11.220.0013
65	● 141.12.110.0001	● 141.12.210.0001	● 141.12.120.0001	● 141.12.220.0001	● 141.12.120.0001	● 141.12.220.0001	● 141.12.220.0001	● 141.12.220.0001
80	● 141.14.110.0001	● 141.14.210.0001	● 141.14.120.0001	● 141.14.220.0001	● 141.14.120.0001	● 141.14.220.0001	● 141.14.220.0001	● 141.14.220.0001
100	● 141.15.110.0001	● 141.15.210.0001	● 141.15.120.0001	● 141.15.220.0001	● 141.15.120.0001	● 141.15.220.0001	● 141.15.220.0001	● 141.15.220.0001
125	● 141.16.110.0001	● 141.16.210.0001	○ 141.16.120.0001	● 141.16.220.0001	○ 141.16.120.0001	● 141.16.220.0001	● 141.16.220.0001	● 141.16.220.0001
150	● 141.17.110.0001	● 141.17.210.0001	● 141.17.120.0001	○ 141.17.220.0001	● 141.17.120.0001	○ 141.17.220.0001	○ 141.17.220.0001	○ 141.17.220.0001

DN	304 polished		304 matt		316 L polished		316 L matt	
	Ident number	Ident number	Ident number	Ident number	Ident number	Ident number	Ident number	Ident number
10	○ 141.04.110.0025	○ 141.04.210.0025	○ 141.04.120.0025	○ 141.04.220.0025	○ 141.04.120.0025	○ 141.04.220.0025	○ 141.04.220.0025	○ 141.04.220.0025
15	○ 141.06.110.0025	○ 141.06.210.0025	○ 141.06.120.0025	○ 141.06.220.0025	○ 141.06.120.0025	○ 141.06.220.0025	○ 141.06.220.0025	○ 141.06.220.0025
20	○ 141.07.110.0025	○ 141.07.210.0025	○ 141.07.120.0025	○ 141.07.220.0025	○ 141.07.120.0025	○ 141.07.220.0025	○ 141.07.220.0025	○ 141.07.220.0025
25	○ 141.08.110.0025	○ 141.08.210.0025	○ 141.08.120.0025	○ 141.08.220.0025	○ 141.08.120.0025	○ 141.08.220.0025	○ 141.08.220.0025	○ 141.08.220.0025
32	○ 141.09.110.0025	○ 141.09.210.0025	○ 141.09.120.0025	○ 141.09.220.0025	○ 141.09.120.0025	○ 141.09.220.0025	○ 141.09.220.0025	○ 141.09.220.0025
40	○ 141.10.110.0025	○ 141.10.210.0025	○ 141.10.120.0025	○ 141.10.220.0025	○ 141.10.120.0025	○ 141.10.220.0025	○ 141.10.220.0025	○ 141.10.220.0025
50	○ 141.11.110.0025	○ 141.11.210.0025	○ 141.11.120.0025	○ 141.11.220.0025	○ 141.11.120.0025	○ 141.11.220.0025	○ 141.11.220.0025	○ 141.11.220.0025
65	○ 141.12.110.0025	○ 141.12.210.0025	○ 141.12.120.0025	○ 141.12.220.0025	○ 141.12.120.0025	○ 141.12.220.0025	○ 141.12.220.0025	○ 141.12.220.0025
80	○ 141.14.110.0025	○ 141.14.210.0025	○ 141.14.120.0025	○ 141.14.220.0025	○ 141.14.120.0025	○ 141.14.220.0025	○ 141.14.220.0025	○ 141.14.220.0025
100	○ 141.15.110.0025	○ 141.15.210.0025	○ 141.15.120.0025	○ 141.15.220.0025	○ 141.15.120.0025	○ 141.15.220.0025	○ 141.15.220.0025	○ 141.15.220.0025
125	○ 141.16.110.0025	○ 141.16.210.0025	○ 141.16.120.0025	○ 141.16.220.0025	○ 141.16.120.0025	○ 141.16.220.0025	○ 141.16.220.0025	○ 141.16.220.0025

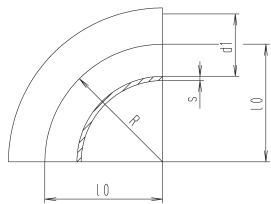
DN	304 polished		304 matt		316 L polished		316 L matt	
	Ident number	Ident number	Ident number	Ident number	Ident number	Ident number	Ident number	Ident number
10	○ 141.04.110.0024	○ 141.04.210.0024	○ 141.04.120.0024	○ 141.04.220.0024	○ 141.04.120.0024	○ 141.04.220.0024	○ 141.04.220.0024	○ 141.04.220.0024
15	○ 141.06.110.0024	○ 141.06.210.0024	○ 141.06.120.0024	○ 141.06.220.0024	○ 141.06.120.0024	○ 141.06.220.0024	○ 141.06.220.0024	○ 141.06.220.0024
20	○ 141.07.110.0024	○ 141.07.210.0024	○ 141.07.120.0024	○ 141.07.220.0024	○ 141.07.120.0024	○ 141.07.220.0024	○ 141.07.220.0024	○ 141.07.220.0024
25	○ 141.08.110.0024	○ 141.08.210.0024	○ 141.08.120.0024	○ 141.08.220.0024	○ 141.08.120.0024	○ 141.08.220.0024	○ 141.08.220.0024	○ 141.08.220.0024
32	● 141.09.110.0024	○ 141.09.210.0024	● 141.09.120.0024	○ 141.09.220.0024	● 141.09.120.0024	○ 141.09.220.0024	○ 141.09.220.0024	○ 141.09.220.0024
40	○ 141.10.110.0024	○ 141.10.210.0024	○ 141.10.120.0024	○ 141.10.220.0024	○ 141.10.120.0024	○ 141.10.220.0024	○ 141.10.220.0024	○ 141.10.220.0024
50	● 141.11.110.0024	○ 141.11.210.0024	● 141.11.120.0024	○ 141.11.220.0024	● 141.11.120.0024	○ 141.11.220.0024	○ 141.11.220.0024	○ 141.11.220.0024
65	● 141.12.110.0007	● 141.12.210.0007	● 141.12.120.0007	● 141.12.220.0007	● 141.12.120.0007	● 141.12.220.0007	● 141.12.220.0007	● 141.12.220.0007
80	● 141.14.110.0007	○ 141.14.210.0007	○ 141.14.120.0007	○ 141.14.220.0007	○ 141.14.120.0007	○ 141.14.220.0007	○ 141.14.220.0007	○ 141.14.220.0007
100	○ 141.15.110.0007	● 141.15.210.0007	○ 141.15.120.0007	○ 141.15.220.0007	○ 141.15.120.0007	○ 141.15.220.0007	○ 141.15.220.0007	○ 141.15.220.0007
125	○ 141.16.110.0007	○ 141.16.210.0007	○ 141.16.120.0007	○ 141.16.220.0007	○ 141.16.120.0007	○ 141.16.220.0007	○ 141.16.220.0007	○ 141.16.220.0007
150	○ 141.17.110.0007	○ 141.17.210.0007	○ 141.17.120.0007	○ 141.17.220.0007	○ 141.17.120.0007	○ 141.17.220.0007	○ 141.17.220.0007	○ 141.17.220.0007

welding bend 90°, DIN 11852 (for tubing similar DIN 11850) (422)



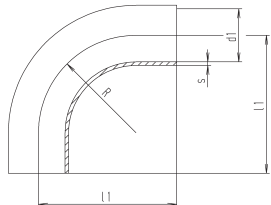
DN	d1	l0	R	s	weight (kg)
10	9	26	26	1.5	0,010
15	15	35	35	1.5	0,020
20	19	40	40	1.5	0,040
25	25	50	50	1.5	0,050
32	31	55	55	1.5	0,080
40	37	60	60	1.5	0,100
50	49	70	70	1.5	0,170

welding bend 90°, DIN 11852 (for tubing similar DIN 11850) (422)



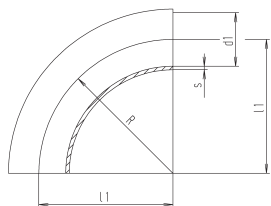
DN	d1	l0	R	s	weight (kg)
10	9	26	26	1.5	0,010
15	15	35	35	1.5	0,020
20	19	40	40	1.5	0,040
25	25	50	50	1.5	0,050
32	31	55	55	1.5	0,080
40	37	60	60	1.5	0,100
50	49	70	70	1.5	0,170

bend 90°, expanding ends 1,5 mm DIN (for tub. similar DIN 11850) (433)



DN	d1	l1	R	s	weight (kg)
10	9	38	26	1.5	0,025
15	15	47	35	1.5	0,050
20	19	52	40	1.5	0,070
25	25	70	50	1.5	0,110
32	31	78	55	1.5	0,155
40	37	85	60	1.5	0,200
50	49	97	70	1.5	0,330
65	66	110	80	2	0,560
80	81	118	90	2	0,790
100	100	140	100	2	1,20

welding bend 90°, 5D-type, (for tubing similar DIN 11850) (422B)



DN	d1	l1	R	s	weight (kg)
25	25	65	65	1.5	0,145
32	31	75	75	1.5	0,150
40	37	95	95	1.5	0,295
50	49	125	125	1.5	0,380

t-pieces, short, DIN 11852 (for tubing acc. DIN 11850 line 2) (311IN)

DN	304 polished Ident number	304 matt Ident number	316 L polished Ident number	316 L matt Ident number
10	● 141.04.110.0002	● 141.04.210.0002	● 141.04.120.0002	● 141.04.220.0002
15	● 141.06.110.0002	● 141.06.210.0002	● 141.06.120.0002	● 141.06.220.0002
20	● 141.07.110.0002	● 141.07.210.0002	● 141.07.120.0002	● 141.07.220.0002
25	● 141.08.110.0002	● 141.08.210.0002	● 141.08.120.0002	● 141.08.220.0002
32	● 141.09.110.0002	● 141.09.210.0002	● 141.09.120.0002	● 141.09.220.0002
40	● 141.10.110.0002	● 141.10.210.0002	● 141.10.120.0002	● 141.10.220.0002
50	● 141.11.110.0002	● 141.11.210.0002	● 141.11.120.0002	● 141.11.220.0002

available in metal blank as well - from DN 65 see series 2

DN	316 L polished Ident number	316 L matt Ident number
10	○ 141.04.120.0302	○ 141.04.220.0302
15	○ 141.06.120.0302	○ 141.06.220.0302
20	○ 141.07.120.0302	○ 141.07.220.0302
25	○ 141.08.120.0302	○ 141.08.220.0302
32	○ 141.09.120.0302	○ 141.09.220.0302
40	○ 141.10.120.0302	○ 141.10.220.0302
50	○ 141.11.120.0302	○ 141.11.220.0302

from DN 65 series 2

t-pieces, short, DIN 11852 (for tubing acc. DIN 11850 line 2) (311IN)

DN	304 polished Ident number	304 matt Ident number	316 L polished Ident number	316 L matt Ident number
10	● 141.04.110.0006	○ 141.04.210.0006	● 141.04.120.0006	○ 141.04.220.0006
15	● 141.06.110.0006	● 141.06.210.0006	● 141.06.120.0006	● 141.06.220.0006
20	● 141.07.110.0006	● 141.07.210.0006	● 141.07.120.0006	● 141.07.220.0006
25	● 141.08.110.0006	● 141.08.210.0006	● 141.08.120.0006	● 141.08.220.0006
32	● 141.09.110.0006	● 141.09.210.0006	● 141.09.120.0006	● 141.09.220.0006
40	● 141.10.110.0006	● 141.10.210.0006	● 141.10.120.0006	● 141.10.220.0006
50	● 141.11.110.0006	● 141.11.210.0006	● 141.11.120.0006	○ 141.11.220.0006
65	● 141.12.110.0003	● 141.12.210.0003	● 141.12.120.0003	○ 141.12.220.0003
80	● 141.14.110.0003	● 141.14.210.0003	● 141.14.120.0003	○ 141.14.220.0003
100	● 141.15.110.0003	● 141.15.210.0003	● 141.15.120.0003	○ 141.15.220.0003

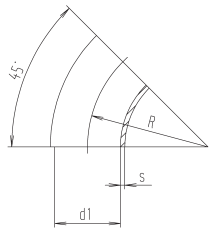
from DN 65 series 2

t-pieces, short, DIN 11852 (for tubing acc. DIN 11850 line 2) (311IN)

DN	304 polished Ident number	304 matt Ident number	316 L polished Ident number	316 L matt Ident number
25	● 141.08.110.0012	● 141.08.210.0012	○ 141.08.120.0012	○ 141.08.220.0012
32	○ 141.09.110.0012	● 141.09.210.0012	○ 141.09.120.0012	○ 141.09.220.0012
40	● 141.10.110.0012	● 141.10.210.0012	● 141.10.120.0012	● 141.10.220.0012
50	● 141.11.110.0012	● 141.11.210.0012	● 141.11.120.0012	● 141.11.220.0012

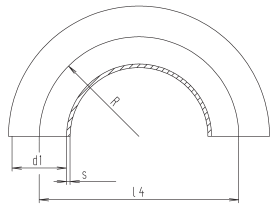
from DN 65 series 2

welding bend 45°, DIN 11852 (for tubing similar DIN 11850) (422A)



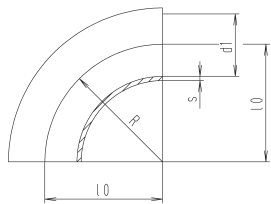
DN	dl	R	s	weight (kg)
10	9	26	1.5	0,008
15	15	35	1.5	0,010
20	19	40	1.5	0,020
25	25	50	1.5	0,030
32	31	55	1.5	0,040
40	37	60	1.5	0,050
50	49	70	1.5	0,090

welding bend 180°, DIN 11852 (for tubing similar DIN 11850) (486)



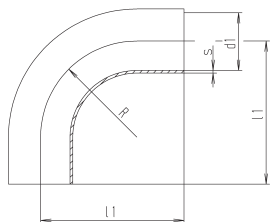
DN	dl	l4	R	s	weight (kg)
10	9	52	26	1.5	0,030
15	15	70	35	1.5	0,070
20	19	80	40	1.5	0,100
25	25	100	50	1.5	0,160
32	31	110	55	1.5	0,220
40	37	120	60	1.5	0,280
50	49	140	70	1.5	0,420

bend 90°, inch (422Z)



DN	dl	l0	R	s	weight (kg)
1"	22.9	27.5	27.5	1.25	0,030
1½"	35.1	45	45	1.5	0,095
2"	47.8	67.5	67.5	1.5	0,190
2½"	60.2	82.5	82.5	1.63	0,290
3"	72.8	95	95	1.63	0,500
4"	97.4	133.5	133.5	2.11	1,100

welding bend 90°, 2.0D, long (version IIA), inch



DN	dl	l1	R	s	weight (kg)
1"	22.9	80	51	1.25	0,090
1½"	35.1	105	76	1.5	0,190
2"	47.8	130	102	1.5	0,310
2½"	60.5	160	127	1.5	0,570
3"	72.8	190	140	1.63	1,080
4"	97.4	195	152.4	2.11	1,240

t-pieces, short, DIN 11852 (for tubing acc. DIN 11850 line 2) (311IN)

DN	304 polished Ident number	304 matt Ident number	316 L polished Ident number	316 L matt Ident number
10	○ 141.04.110.0001	○ 141.04.210.0001	○ 141.04.120.0001	○ 141.04.220.0001
15	● 141.06.110.0001	● 141.06.210.0001	● 141.06.120.0001	● 141.06.220.0001
20	● 141.07.110.0001	● 141.07.210.0001	● 141.07.120.0001	● 141.07.220.0001
25	● 141.08.110.0001	● 141.08.210.0001	● 141.08.120.0001	● 141.08.220.0001
32	● 141.09.110.0001	● 141.09.210.0001	● 141.09.120.0001	● 141.09.220.0001
40	● 141.10.110.0001	● 141.10.210.0001	● 141.10.120.0001	● 141.10.220.0001
50	● 141.11.110.0001	● 141.11.210.0001	● 141.11.120.0001	● 141.11.220.0001

from DN 65 series 2

t-pieces, short, DIN 11852 (for tubing acc. DIN 11850 line 2) (311IN)

DN	304 polished Ident number	304 matt Ident number	316 L polished Ident number	316 L matt Ident number
10	○ 141.04.110.0007	○ 141.04.210.0007	○ 141.04.120.0007	○ 141.04.220.0007
15	● 141.06.110.0007	● 141.06.210.0007	● 141.06.120.0007	● 141.06.220.0007
20	● 141.07.110.0007	● 141.07.210.0007	● 141.07.120.0007	● 141.07.220.0007
25	● 141.08.110.0007	● 141.08.210.0007	● 141.08.120.0007	● 141.08.220.0007
32	● 141.09.110.0007	● 141.09.210.0007	● 141.09.120.0007	● 141.09.220.0007
40	● 141.10.110.0007	● 141.10.210.0007	● 141.10.120.0007	● 141.10.220.0007
50	● 141.11.110.0007	● 141.11.210.0007	● 141.11.120.0007	● 141.11.220.0007

from DN 65 series 2

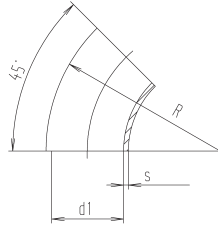
t-pieces, short, DIN 11850 (for tubing acc. DIN 11850 line 2) (311IN)

DN	304 polished Ident number	304 matt Ident number	316 L polished Ident number	316 L matt Ident number
1"	● 143.08.110.0001	○ 143.08.210.0001	● 143.08.120.0001	○ 143.08.220.0001
1½"	● 143.10.110.0001	● 143.10.210.0001	● 143.10.120.0001	● 143.10.220.0001
2"	● 143.11.110.0001	● 143.11.210.0001	● 143.11.120.0001	● 143.11.220.0001
2½"	● 143.12.110.0001	● 143.12.210.0001	● 143.12.120.0001	● 143.12.220.0001
3"	● 143.13.110.0001	● 143.13.210.0001	● 143.13.120.0001	● 143.13.220.0001
4"	● 143.15.110.0001	● 143.15.210.0001	● 143.15.120.0001	○ 143.15.220.0001

t-pieces, short, DIN 11852 (for tubing acc. DIN 11850 line 2) (311IN)

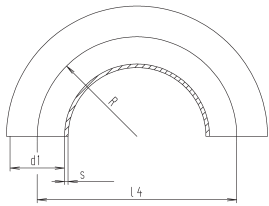
DN	304 polished Ident number	304 matt Ident number	316 L polished Ident number	316 L matt Ident number
1"	○ 143.08.110.0000	○ 143.08.210.0000	○ 143.08.120.0000	○ 143.08.220.0000
1½"	○ 143.10.110.0000	○ 143.10.210.0000	○ 143.10.120.0000	○ 143.10.220.0000
2"	○ 143.11.110.0000	○ 143.11.210.0000	○ 143.11.120.0000	○ 143.11.220.0000
2½"	○ 143.12.110.0000	○ 143.12.210.0000	○ 143.12.120.0000	○ 143.12.220.0000
3"	○ 143.13.110.0000	○ 143.13.210.0000	○ 143.13.120.0000	○ 143.13.220.0000
4"	○ 143.15.110.0000	○ 143.15.210.0000	○ 143.15.120.0000	○ 143.15.220.0000

welding bend 45°, inch



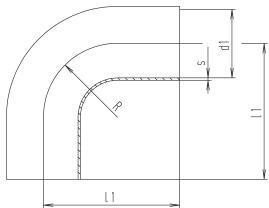
DN	dl	R	s	weight (kg)
1"	22.9	27.5	1.25	0,015
1½"	35.1	45	1.5	0,042
2"	47.8	67.5	1.5	0,095
2½"	60.2	82.5	1.63	0,145
3"	72.8	95	1.63	0,250
4"	97.4	133.5	2.11	0,550

welding bend 180° inch (486Z)



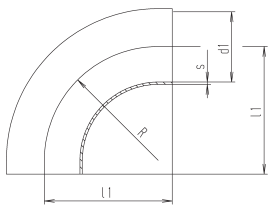
DN	dl	l4	R	s	weight (kg)
1"	22.9	55	27.5	1.25	0,070
1½"	35.1	90	45	1.5	0,200
2"	47.8	135	67.5	1.5	0,400
2½"	60.2	165	82.5	1.63	0,640
3"	72.8	190	95	1.63	0,900
4"	97.4	267	133.5	2.11	2,100

welding bend 90°, I,OD, SMS (433S)



DN	dl	l1	R	s	weight (kg)
25	22.6	55	25	1.2	0,056
38	35.6	70	38	1.2	0,110
51	48.6	82	51	1.2	0,200
63,5	60.3	105	63.5	1.6	0,440
76	72	110	76	2	0,610
101,6	97.6	150	150	2	1,320

welding bend 90°, I,5D, short, SMS (433S)



DN	dl	l1	R	s	weight (kg)
25	22.6	44	37.5	1.2	0,054
38	35.6	64	57	1.2	0,106
51	48.6	89	76.5	1.2	0,205
63,5	60.3	114	95.3	1.6	0,440
76	72.9	134	114.2	1.6	0,620
101,6	97.6	174	152.5	2	1,320

t-pieces, short, DIN 11850 (for tubing acc. DIN 11850 line 2) (311IN)

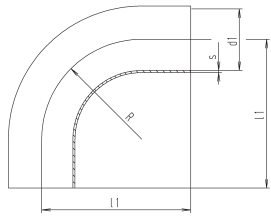
DN	304 polished Ident number	304 matt Ident number	316 L polished Ident number	316 L matt Ident number
1"	○ 143.08.110.0002	○ 143.08.210.0002	○ 143.08.120.0002	○ 143.08.220.0002
1½"	○ 143.10.110.0002	○ 143.10.210.0002	○ 143.10.120.0002	○ 143.10.220.0002
2"	○ 143.11.110.0002	○ 143.11.210.0002	○ 143.11.120.0002	○ 143.11.220.0002
2½"	○ 143.12.110.0002	○ 143.12.210.0002	○ 143.12.120.0002	○ 143.12.220.0002
3"	○ 143.13.110.0002	○ 143.13.210.0002	○ 143.13.120.0002	○ 143.13.220.0002
4"	○ 143.15.110.0002	○ 143.15.210.0002	○ 143.15.120.0002	○ 143.15.220.0002

DN	304 polished Ident number	304 matt Ident number	316 L polished Ident number	316 L matt Ident number
1"	○ 143.08.110.0006	○ 143.08.210.0006	○ 143.08.120.0006	○ 143.08.220.0006
1½"	○ 143.10.110.0006	○ 143.10.210.0006	○ 143.10.120.0006	○ 143.10.220.0006
2"	○ 143.11.110.0006	○ 143.11.210.0006	○ 143.11.120.0006	○ 143.11.220.0006
2½"	○ 143.12.110.0006	○ 143.12.210.0006	○ 143.12.120.0006	○ 143.12.220.0006
3"	○ 143.13.110.0006	○ 143.13.210.0006	○ 143.13.120.0006	○ 143.13.220.0006
4"	○ 143.15.110.0006	○ 143.15.210.0006	○ 143.15.120.0006	○ 143.15.220.0006

DN	304 polished Ident number	304 matt Ident number	316 L polished Ident number	316 L matt Ident number
25	○ 145.08.110.0001	○ 145.08.210.0001	○ 145.08.120.0001	○ 145.08.220.0001
38	○ 145.10.110.0001	○ 145.10.210.0001	○ 145.10.120.0001	○ 145.10.220.0001
51	○ 145.11.110.0001	○ 145.11.210.0001	○ 145.11.120.0001	○ 145.11.220.0001
63,5	○ 145.12.110.0001	○ 145.12.210.0001	○ 145.12.120.0001	○ 145.12.220.0001
76	○ 145.13.110.0001	○ 145.13.210.0001	○ 145.13.120.0001	○ 145.13.220.0001
101,6	○ 145.15.110.0001	○ 145.15.210.0001	○ 145.15.120.0001	○ 145.15.220.0001

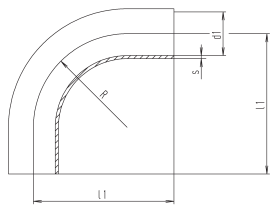
DN	304 polished Ident number	304 matt Ident number	316 L polished Ident number	316 L matt Ident number
25	○ 145.08.110.0002	○ 145.08.210.0002	○ 145.08.120.0002	○ 145.08.220.0002
38	○ 145.10.110.0002	○ 145.10.210.0002	○ 145.10.120.0002	○ 145.10.220.0002
51	○ 145.11.110.0002	○ 145.11.210.0002	○ 145.11.120.0002	○ 145.11.220.0002
63,5	○ 145.12.110.0002	○ 145.12.210.0002	○ 145.12.120.0002	○ 145.12.220.0002
76	○ 145.13.110.0002	○ 145.13.210.0002	○ 145.13.120.0002	○ 145.13.220.0002
101,6	○ 145.15.110.0002	○ 145.15.210.0002	○ 145.15.120.0002	○ 145.15.220.0002

welding bend 90°, 1,5D, long, SMS (433S)



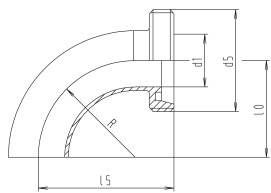
DN	dI	II	R	s	weight (kg)
25	22.6	65	37.5	1.2	0,076
38	35.6	85	57	1.2	0,152
51	48.6	110	76.5	1.2	0,260
63,5	60.3	135	95.3	1.6	0,550
76	72.9	155	114.2	1.6	0,750
101,6	97.6	195	152.5	2	1,480

welding bend 90°, 2,0D, long, SMS



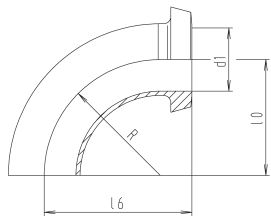
DN	dI	II	R	s	weight (kg)
25	22.6	80	50	1.2	0,090
38	35.6	105	70	1.2	0,190
51	48.6	130	95	1.2	0,310
63,5	60.3	160	120	1.6	0,570
76	72.8	190	140	1.63	1,080
101,6	97.4	195	152.4	2.11	1,240

bend 90°, male/weld end, (for tubing similar DIN 11850) (452)



DN	dI	d5	l0	l5	R	weight (kg)
10	9	28x1/8"	26	43	26	0,040
15	15	34x1/8"	35	52	35	0,110
20	19	44x1/6"	40	59	40	0,130
25	25	52x1/6"	50	72	50	0,160
32	31	58x1/6"	55	77	55	0,210
40	37	65x1/6"	60	82	60	0,280
50	49	78x1/6"	70	93	70	0,370
65	66	95x1/6"	80	105	80	0,660
80	81	110x1/4"	90	115	90	0,990
100	100	130x1/4"	100	130	100	1,680
125	125	160x1/4"	187.5	223	187.5	2,900
150	150	190x1/4"	225	265	225	4,280

bend 90°, liner/weld end, DIN 11851 (for tub. similar DIN 11850) (462)



DN	dI	l0	l6	R	weight (kg)
10	9	26	39	26	0,030
15	15	35	48	35	0,070
20	19	40	53	40	0,130
25	25	50	65	50	0,130
32	31	55	70	55	0,170
40	37	60	75	60	0,220
50	49	70	86	70	0,300
65	66	80	97	80	0,560
80	81	90	107	90	0,810
100	100	100	120	100	1,760
125	125	187.5	211	187.5	2,580
150	150	225	252	225	3,510

t-pieces, short, DIN 11852 (for tubing acc. DIN 11850 line 2) (311IN)

DN	304 polished Ident number	304 matt Ident number	316 L polished Ident number	316 L matt Ident number
25	o 145.08.110.0003	o 145.08.210.0003	o 145.08.120.0003	o 145.08.220.0003
38	o 145.10.110.0003	o 145.10.210.0003	o 145.10.120.0003	o 145.10.220.0003
51	o 145.11.110.0003	o 145.11.210.0003	o 145.11.120.0003	o 145.11.220.0003
63,5	o 145.12.110.0003	o 145.12.210.0003	o 145.12.120.0003	o 145.12.220.0003
76	o 145.13.110.0003	o 145.13.210.0003	o 145.13.120.0003	o 145.13.220.0003
101,6	o 145.15.110.0003	o 145.15.210.0003	o 145.15.120.0003	o 145.15.220.0003

DN	304 polished Ident number	304 matt Ident number	316 L polished Ident number	316 L matt Ident number
25	o 145.08.110.0000	o 145.08.210.0000	o 145.08.120.0000	o 145.08.220.0000
38	o 145.10.110.0000	o 145.10.210.0000	o 145.10.120.0000	o 145.10.220.0000
51	o 145.11.110.0000	o 145.11.210.0000	o 145.11.120.0000	o 145.11.220.0000
63,5	o 145.12.110.0000	o 145.12.210.0000	o 145.12.120.0000	o 145.12.220.0000
76	o 145.13.110.0000	o 145.13.210.0000	o 145.13.120.0000	o 145.13.220.0000
101,6	o 145.15.110.0000	o 145.15.210.0000	o 145.15.120.0000	o 145.15.220.0000

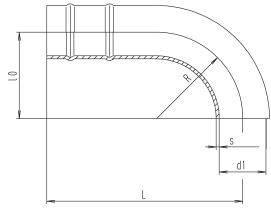
DN	304 polished Ident number	304 matt Ident number	316 L polished Ident number	316 L matt Ident number
10	o 142.04.110.0001	o 142.04.210.0001	o 142.04.120.0001	o 142.04.220.0001
15	● 142.06.110.0001	o 142.06.210.0001	o 142.06.120.0001	o 142.06.220.0001
20	o 142.07.110.0001	o 142.07.210.0001	o 142.07.120.0001	o 142.07.220.0001
25	● 142.08.110.0001	o 142.08.210.0001	o 142.08.120.0001	o 142.08.220.0001
32	● 142.09.110.0001	o 142.09.210.0001	o 142.09.120.0001	o 142.09.220.0001
40	● 142.10.110.0001	o 142.10.210.0001	o 142.10.120.0001	o 142.10.220.0001
50	● 142.11.110.0001	o 142.11.210.0001	o 142.11.120.0001	o 142.11.220.0001
65	o 142.12.110.0001	o 142.12.210.0001	o 142.12.120.0001	o 142.12.220.0001
80	o 142.14.110.0001	o 142.14.210.0001	o 142.14.120.0001	o 142.14.220.0001
100	o 142.15.110.0001	o 142.15.210.0001	o 142.15.120.0001	o 142.15.220.0001
125	o 142.16.110.0001	o 142.16.210.0001	o 142.16.120.0001	o 142.16.220.0001
150	o 142.17.110.0001	o 142.17.210.0001	o 142.17.120.0001	o 142.17.220.0001

from DN 65 DIN 11850 see series 2

DN	304 polished Ident number	304 matt Ident number	316 L polished Ident number	316 L matt Ident number
10	o 142.04.110.0022	o 142.04.210.0022	o 142.04.120.0022	o 142.04.220.0022
15	● 142.06.110.0022	o 142.06.210.0022	o 142.06.120.0022	o 142.06.220.0022
20	o 142.07.110.0022	o 142.07.210.0022	o 142.07.120.0022	o 142.07.220.0022
25	● 142.08.110.0022	o 142.08.210.0022	● 142.08.120.0022	o 142.08.220.0022
32	● 142.09.110.0022	o 142.09.210.0022	o 142.09.120.0022	o 142.09.220.0022
40	● 142.10.110.0022	o 142.10.210.0022	● 142.10.120.0022	o 142.10.220.0022
50	● 142.11.110.0022	o 142.11.210.0022	● 142.11.120.0022	o 142.11.220.0022
65	● 142.12.110.0022	o 142.12.210.0022	o 142.12.120.0022	o 142.12.220.0022
80	o 142.14.110.0022	o 142.14.210.0022	o 142.14.120.0022	o 142.14.220.0022
100	o 142.15.110.0022	o 142.15.210.0022	o 142.15.120.0022	o 142.15.220.0022
125	o 142.16.110.0022	o 142.16.210.0022	o 142.16.120.0022	o 142.16.220.0022
150	o 142.17.110.0022	o 142.17.210.0022	o 142.17.120.0022	o 142.17.220.0022

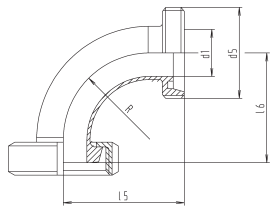
from DN 65 DIN 11850 see series 2

bend 90°, hose spout / weld end, (for tub. acc. DIN 11850 line 1) (436)



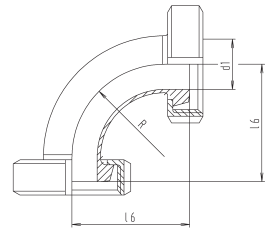
DN	d1	l0	L	R	s	weight (kg)
25	26	50	110	50	1	0,080
32	32	55	125	55	1	0,110
40	38	60	140	60	1	0,160
50	50	70	160	70	1	0,250
65	66	80	180	80	2	0,820
80	81	90	200	90	2	1,070
100	100	100	220	100	2	1,750

bend 90°, male/liner, DIN (456)



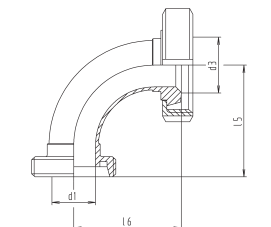
DN	d1	d5	l5	l6	R	weight (kg)
10	10	28x1/8"	43	39	26	0,160
15	16	34x1/8"	52	48	35	0,200
20	20	44x1/6"	59	53	40	0,280
25	26	52x1/6"	72	65	50	0,400
32	32	58x1/6"	77	70	55	0,480
40	38	65x1/6"	82	75	60	0,560
50	50	78x1/6"	93	86	70	0,770
65	66	95x1/6"	105	97	80	1,420
80	81	110x1/4"	115	107	90	1,950
100	100	130x1/4"	130	120	100	2,670
125	125	160x1/4"	223	211	187,5	4,950
150	150	190x1/4"	265	252	225	7,250

bend 90°, liner/liner, DIN 11851 (466)



DN	d1	l6	R	weight (kg)
10	10	39	26	0,180
15	16	48	35	0,220
20	20	53	40	0,370
25	26	65	50	0,540
32	32	70	55	0,650
40	38	75	60	0,760
50	50	86	70	1,000
65	66	97	80	1,840
80	81	107	90	2,650
100	100	120	100	4,100
125	125	211	187,5	6,080
150	150	252	225	8,660

bend 90°, liner/reduced male, DIN 11851 (482)



DN	d1	d3	l5	l6	weight (kg)
32/25	26	32	72	69	0,490
40/25	26	38	72	69	0,560
40/32	32	38	77	74	0,600
50/32	32	50	77	74	0,830
50/40	38	50	82	80	1,400
65/50	50	66	93	93	1,820
80/50	50	81	93	97	1,870
80/65	66	81	105	107	1,950
100/65	66	100	105	107	2,810
100/80	81	100	115	117	2,360

t-pieces, short, DIN 11852 (for tubing acc. DIN 11850 line 2) (511IN)

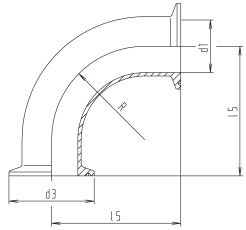
DN	304 polished Ident number	304 matt Ident number	316 L polished Ident number	316 L matt Ident number
25	○ 142.08.110.0012	○ 142.08.210.0012	○ 142.08.120.0012	○ 142.08.220.0012
32	○ 142.09.110.0012	○ 142.09.210.0012	○ 142.09.120.0012	○ 142.09.220.0012
40	● 142.10.110.0012	● 142.10.210.0012	○ 142.10.120.0012	○ 142.10.220.0012
50	○ 142.11.110.0012	○ 142.11.210.0012	○ 142.11.120.0012	○ 142.11.220.0012
65	● 142.12.110.0012	● 142.12.210.0012	○ 142.12.120.0012	○ 142.12.220.0012
80	○ 142.14.110.0012	○ 142.14.210.0012	○ 142.14.120.0012	○ 142.14.220.0012
100	○ 142.15.110.0012	○ 142.15.210.0012	○ 142.15.120.0012	○ 142.15.220.0012

DN	304 polished Ident number	304 matt Ident number	316 L polished Ident number	316 L matt Ident number
10	○ 142.04.110.0020	○ 142.04.210.0020	○ 142.04.120.0020	○ 142.04.220.0020
15	● 142.06.110.0020	○ 142.06.210.0020	○ 142.06.120.0020	○ 142.06.220.0020
20	○ 142.07.110.0020	○ 142.07.210.0020	○ 142.07.120.0020	○ 142.07.220.0020
25	● 142.08.110.0020	○ 142.08.210.0020	○ 142.08.120.0020	○ 142.08.220.0020
32	● 142.09.110.0020	○ 142.09.210.0020	○ 142.09.120.0020	○ 142.09.220.0020
40	● 142.10.110.0020	○ 142.10.210.0020	○ 142.10.120.0020	○ 142.10.220.0020
50	● 142.11.110.0020	○ 142.11.210.0020	○ 142.11.120.0020	○ 142.11.220.0020
65	● 142.12.110.0020	○ 142.12.210.0020	○ 142.12.120.0020	○ 142.12.220.0020
80	● 142.14.110.0020	○ 142.14.210.0020	○ 142.14.120.0020	○ 142.14.220.0020
100	○ 142.15.110.0020	○ 142.15.210.0020	○ 142.15.120.0020	○ 142.15.220.0020
125	○ 142.16.110.0020	○ 142.16.210.0020	○ 142.16.120.0020	○ 142.16.220.0020
150	○ 142.17.110.0020	○ 142.17.210.0020	○ 142.17.120.0020	○ 142.17.220.0020

DN	304 polished Ident number	304 matt Ident number	316 L polished Ident number	316 L matt Ident number
10	○ 142.04.110.0040	○ 142.04.210.0040	○ 142.04.120.0040	○ 142.04.220.0040
15	○ 142.06.110.0040	○ 142.06.210.0040	○ 142.06.120.0040	○ 142.06.220.0040
20	○ 142.07.110.0040	○ 142.07.210.0040	○ 142.07.120.0040	○ 142.07.220.0040
25	● 142.08.110.0040	○ 142.08.210.0040	○ 142.08.120.0040	○ 142.08.220.0040
32	● 142.09.110.0040	○ 142.09.210.0040	○ 142.09.120.0040	○ 142.09.220.0040
40	● 142.10.110.0040	○ 142.10.210.0040	○ 142.10.120.0040	○ 142.10.220.0040
50	● 142.11.110.0040	○ 142.11.210.0040	○ 142.11.120.0040	○ 142.11.220.0040
65	● 142.12.110.0040	○ 142.12.210.0040	○ 142.12.120.0040	○ 142.12.220.0040
80	○ 142.14.110.0040	○ 142.14.210.0040	○ 142.14.120.0040	○ 142.14.220.0040
100	○ 142.15.110.0040	○ 142.15.210.0040	○ 142.15.120.0040	○ 142.15.220.0040
125	○ 142.16.110.0040	○ 142.16.210.0040	○ 142.16.120.0040	○ 142.16.220.0040
150	○ 142.17.110.0040	○ 142.17.210.0040	○ 142.17.120.0040	○ 142.17.220.0040

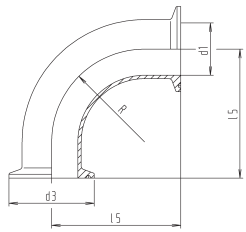
DN	304 polished Ident number	304 matt Ident number	316 L polished Ident number	316 L matt Ident number
32/25	○ 142.30.110.0017	○ 142.30.210.0017	○ 142.30.120.0017	○ 142.30.220.0017
40/25	○ 142.34.110.0017	○ 142.34.210.0017	○ 142.34.120.0017	○ 142.34.220.0017
40/32	○ 142.35.110.0017	○ 142.35.210.0017	○ 142.35.120.0017	○ 142.35.220.0017
50/32	○ 142.40.110.0017	○ 142.40.210.0017	○ 142.40.120.0017	○ 142.40.220.0017
50/40	○ 142.41.110.0017	○ 142.41.210.0017	○ 142.41.120.0017	○ 142.41.220.0017
65/50	○ 142.48.110.0017	○ 142.48.210.0017	○ 142.48.120.0017	○ 142.48.220.0017
80/50	○ 142.63.110.0017	○ 142.63.210.0017	○ 142.63.120.0017	○ 142.63.220.0017
80/65	○ 142.64.110.0017	○ 142.64.210.0017	○ 142.64.120.0017	○ 142.64.220.0017
100/65	○ 142.73.110.0017	○ 142.73.210.0017	○ 142.73.120.0017	○ 142.73.220.0017
100/80	○ 142.75.110.0017	○ 142.75.210.0017	○ 142.75.120.0017	○ 142.75.220.0017

bend 90°, clamp/clamp, DIN (444)



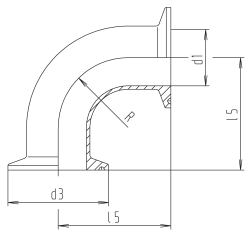
DN	d1	d3	I5	R	weight (kg)
10	10	34	44	26	0,070
15	16	34	53	35	0,080
20	20	34	58	40	0,100
25	26	50,5	71,5	50	0,200
32	32	50,5	76,5	55	0,220
40	38	50,5	81,5	60	0,250
50	50	64	91,5	70	0,350
65	66	91	108	80	0,750
80	81	106	118	90	1,000
100	100	119	128	100	1,610

bend 90°, clamp/clamp, DIN (444)



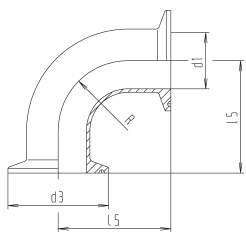
DN	d1	d3	I5	R	weight (kg)
10	10	34	44	26	0,070
15	16	34	53	35	0,080
20	20	34	58	40	0,100
25	26	50,5	71,5	50	0,200
32	32	50,5	76,5	55	0,220
40	38	50,5	81,5	60	0,250
50	50	64	91,5	70	0,350
65	66	91	108	80	0,750
80	81	106	118	90	1,000
100	100	119	128	100	1,610

bend 90°, clamp/clamp, inch OD (444Z)



DN	d1	d3	I5	R	weight (kg)
1"	22,9	50,5	49	27,5	0,200
1½"	35,1	50,5	66,5	45	0,250
2"	47,8	64	89	67,5	0,330
2½"	60,5	77,5	110,5	82,5	0,490
3"	73,1	91	123	95	0,800
4"	97,6	119	161,5	133,5	1,500

bend 90°, clamp/clamp, inch OD (444Z)



DN	d1	d3	I5	R	weight (kg)
1"	22,1	50,5	50,8	27,5	0,200
1½"	34,8	50,5	69,9	45	0,250
2"	47,5	64	88,9	67,5	0,330
2½"	60,2	77,5	108	82,5	0,490
3"	72,9	91	127	95	0,800
4"	97,4	119	168,3	133,5	1,500

t-pieces, short, DIN 11852 (for tubing acc. DIN 11850 line 2) (S11IN)

DN	304 polished Ident number		316 L polished Ident number	
	○	●	○	●
10	○ 142.04.110.0000		○ 142.04.120.0000	
15	○ 142.06.110.0000		○ 142.06.120.0000	
20	○ 142.07.110.0000		○ 142.07.120.0000	
25	○ 142.08.110.0000	● 142.08.120.0000		
32	○ 142.09.110.0000		○ 142.09.120.0000	
40	○ 142.10.110.0000	● 142.10.120.0000		
50	○ 142.11.110.0000	● 142.11.120.0000		
65	○ 142.12.110.0000		○ 142.12.120.0000	
80	○ 142.14.110.0000		○ 142.14.120.0000	
100	○ 142.15.110.0000		○ 142.15.120.0000	

available in matt as well

DN	316 L polished Ident number
10	○ 142.04.120.0300
15	○ 142.06.120.0300
20	○ 142.07.120.0300
25	○ 142.08.120.0300
32	○ 142.09.120.0300
40	○ 142.10.120.0300
50	○ 142.11.120.0300
65	○ 142.12.120.0300
80	○ 142.14.120.0300
100	○ 142.15.120.0300

available in matt as well

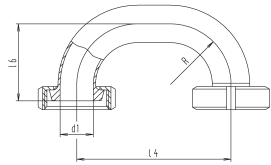
DN	304 polished Ident number		316 L polished Ident number	
	○	●	○	●
1"	○ 144.08.110.0000		● 144.08.120.0000	
1½"	● 144.10.110.0000		● 144.10.120.0000	
2"	○ 144.11.110.0000		● 144.11.120.0000	
2½"	○ 144.12.110.0000		○ 144.12.120.0000	
3"	○ 144.13.110.0000		○ 144.13.120.0000	
4"	○ 144.15.110.0000		○ 144.15.120.0000	

available in matt as well

DN	316 L polished Ident number
1"	○ 144.08.120.0301
1½"	○ 144.10.120.0301
2"	○ 144.11.120.0301
2½"	○ 144.12.120.0301
3"	○ 144.13.120.0301
4"	○ 144.15.120.0301

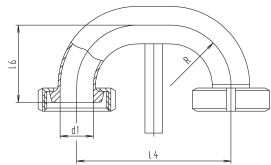
available in matt as well

switch bend, 180°, DIN 11851 liner/liner



DN	dl	l4	l6	R	weight (kg)
25	25	250	65	50	0,760
32	31	300	70	55	0,960
40	37	300	75	60	1,160
50	49	300	86	70	1,530
65	66	300	97	80	2,580
80	81	350	107	90	3,790
100	100	400	120	100	6,480

switch bend, 180°, DIN 11851 liner/liner, with switching rod



DN	dl	l4	l6	R	weight (kg)
25	26	250	65	50	0,780
32	32	250	70	55	0,980
40	38	300	75	60	1,180
50	50	300	86	70	1,550
65	66	300	97	80	2,600
80	81	350	107	90	3,810
100	100	350	120	100	6,500

t-pieces, short, DIN 11852 (for tubing acc. DIN 11850 line 2) (311IN)

DN	304 polished Ident number	304 matt Ident number	316 L polished Ident number	316 L matt Ident number
25	o 142.08.110.0048	o 142.08.210.0048	o 142.08.120.0048	o 142.08.220.0048
32	o 142.09.110.0048	o 142.09.210.0048	o 142.09.120.0048	o 142.09.220.0048
40	o 142.10.110.0048	o 142.10.210.0048	o 142.10.120.0048	o 142.10.220.0048
50	o 142.11.110.0048	o 142.11.210.0048	o 142.11.120.0048	o 142.11.220.0048
65	o 142.12.110.0048	o 142.12.210.0048	o 142.12.120.0048	o 142.12.220.0048
80	o 142.14.110.0048	o 142.14.210.0048	o 142.14.120.0048	o 142.14.220.0048
100	o 142.15.110.0048	o 142.15.210.0048	o 142.15.120.0048	o 142.15.220.0048

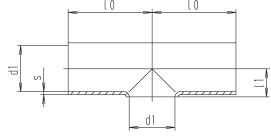
other L4 dimensions on demand

t-pieces, short, DIN 11852 (for tubing acc. DIN 11850 line 2) (311IN)

DN	304 polished Ident number	304 matt Ident number	316 L polished Ident number	316 L matt Ident number
25	o 142.08.110.0049	o 142.08.210.0049	o 142.08.120.0049	o 142.08.220.0049
32	o 142.09.110.0049	o 142.09.210.0049	o 142.09.120.0049	o 142.09.220.0049
40	o 142.10.110.0049	o 142.10.210.0049	o 142.10.120.0049	o 142.10.220.0049
50	o 142.11.110.0049	o 142.11.210.0049	o 142.11.120.0049	o 142.11.220.0049
65	o 142.12.110.0049	o 142.12.210.0049	o 142.12.120.0049	o 142.12.220.0049
80	o 142.14.110.0049	o 142.14.210.0049	o 142.14.120.0049	o 142.14.220.0049
100	o 142.15.110.0049	o 142.15.210.0049	o 142.15.120.0049	o 142.15.220.0049

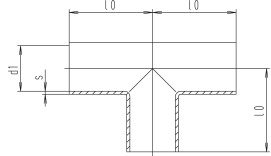
other L4 dimensions on demand

t-pieces, short, DIN 11852 (for tubing acc. DIN 11850 line 2) (5111N)



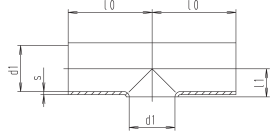
DN	d1	l0	l1	s	weight (kg)
10	10	35	7	1.5	0,020
15	16	35	11	1.5	0,030
20	20	40	13	1.5	0,070
25	26	50	16	1.5	0,090
32	32	55	19.5	1.5	0,120
40	38	60	23	1.5	0,150
50	50	70	30	1.5	0,240
65	66	80	40	2	0,460
80	81	90	47.5	2	0,680
100	100	100	58	2	0,920
125	125	187.5	74	2	1,970
150	150	225	90	2	2,890
200	200	300	115	2	5,460
250	250	375	140	2	8,430

t-pieces, weld ends, DIN 11852 (for tub. acc. DIN 11850 line 2) (5222N)



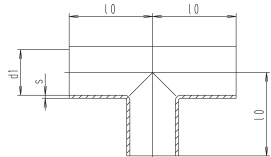
DN	d1	l0	s	weight (kg)
10	10	35	1.5	0,030
15	16	35	1.5	0,050
20	20	40	1.5	0,080
25	26	50	1.5	0,100
32	32	55	1.5	0,130
40	38	60	1.5	0,210
50	50	70	1.5	0,290
65	66	80	2	0,620
80	81	90	2	0,850
100	100	100	2	1,620
125	125	187.5	2	2,710
150	150	225	2	3,880
200	200	300	2	7,100
250	250	375	2	10,960

t-pieces, short, DIN 11852 (for tubing acc. DIN 11850 line 2) (5111N)



DN	d1	l0	l1	s	weight (kg)
10	10	35	7	1.5	0,020
15	16	35	11	1.5	0,030
20	20	40	13	1.5	0,070
25	26	50	16	1.5	0,090
32	32	55	19.5	1.5	0,120
40	38	60	23	1.5	0,150
50	50	70	30	1.5	0,240
65	66	80	40	2	0,460
80	81	90	47.5	2	0,680
100	100	100	58	2	0,920
125	125	187.5	74	2	1,970
150	150	225	90	2	2,890
200	200	300	115	2	5,460
250	250	375	140	2	8,430

t-pieces, weld ends, DIN 11852 (for tub. acc. DIN 11850 line 2) (5222N)



DN	d1	l0	s	weight (kg)
10	10	35	1.5	0,030
15	16	35	1.5	0,050
20	20	40	1.5	0,080
25	26	50	1.5	0,100
32	32	55	1.5	0,130
40	38	60	1.5	0,210
50	50	70	1.5	0,290
65	66	80	2	0,620
80	81	90	2	0,850
100	100	100	2	1,620
125	125	187.5	2	2,710
150	150	225	2	3,880
200	200	300	2	7,100
250	250	375	2	10,960

t-pieces, short, DIN 11852 (for tubing acc. DIN 11850 line 2) (5111N)

DN	304 polished Ident number	304 matt Ident number	316 L polished Ident number	316 L matt Ident number
10	○ 151.04.110.0030	○ 151.04.210.0030	○ 151.04.120.0030	○ 151.04.220.0030
15	● 151.06.110.0030	● 151.06.210.0030	● 151.06.120.0030	○ 151.06.220.0030
20	● 151.07.110.0030	● 151.07.210.0030	● 151.07.120.0030	○ 151.07.220.0030
25	● 151.08.110.0030	● 151.08.210.0030	● 151.08.120.0030	● 151.08.220.0030
32	● 151.09.110.0030	● 151.09.210.0030	● 151.09.120.0030	○ 151.09.220.0030
40	● 151.10.110.0030	● 151.10.210.0030	● 151.10.120.0030	● 151.10.220.0030
50	● 151.11.110.0030	● 151.11.210.0030	● 151.11.120.0030	● 151.11.220.0030
65	● 151.12.110.0000	● 151.12.210.0000	● 151.12.120.0000	● 151.12.220.0000
80	● 151.14.110.0000	● 151.14.210.0000	● 151.14.120.0000	● 151.14.220.0000
100	● 151.15.110.0000	● 151.15.210.0000	● 151.15.120.0000	● 151.15.220.0000
125	● 151.16.110.0000	● 151.16.210.0000	○ 151.16.120.0000	○ 151.16.220.0000
150	● 151.17.110.0000	● 151.17.210.0000	○ 151.17.120.0000	○ 151.17.220.0000
200	○ 151.18.110.0000	● 151.18.210.0000	○ 151.18.120.0000	○ 151.18.220.0000
250	○ 151.19.110.0000	○ 151.19.210.0000	○ 151.19.120.0000	○ 151.19.220.0000

t-pieces, short, DIN 11852 (for tubing acc. DIN 11850 line 2) (5111N)

DN	304 polished Ident number	304 matt Ident number	316 L polished Ident number	316 L matt Ident number
10	● 151.04.110.0017	● 151.04.210.0017	● 151.04.120.0017	● 151.04.220.0017
15	● 151.06.110.0017	● 151.06.210.0017	● 151.06.120.0017	● 151.06.220.0017
20	● 151.07.110.0017	● 151.07.210.0017	● 151.07.120.0017	● 151.07.220.0017
25	● 151.08.110.0017	● 151.08.210.0017	● 151.08.120.0017	● 151.08.220.0017
32	○ 151.09.110.0017	○ 151.09.210.0017	● 151.09.120.0017	○ 151.09.220.0017
40	● 151.10.110.0017	● 151.10.210.0017	● 151.10.120.0017	● 151.10.220.0017
50	● 151.11.110.0017	● 151.11.210.0017	● 151.11.120.0017	● 151.11.220.0017
65	● 151.12.110.0001	● 151.12.210.0001	● 151.12.120.0001	● 151.12.220.0001
80	● 151.14.110.0001	● 151.14.210.0001	● 151.14.120.0001	● 151.14.220.0001
100	● 151.15.110.0001	● 151.15.210.0001	● 151.15.120.0001	● 151.15.220.0001
125	● 151.16.110.0001	● 151.16.210.0001	○ 151.16.120.0001	○ 151.16.220.0001
150	● 151.17.110.0001	● 151.17.210.0001	○ 151.17.120.0001	○ 151.17.220.0001
200	● 151.18.110.0001	○ 151.18.210.0001	○ 151.18.120.0001	○ 151.18.220.0001
250	○ 151.19.110.0001	○ 151.19.210.0001	○ 151.19.120.0001	○ 151.19.220.0001

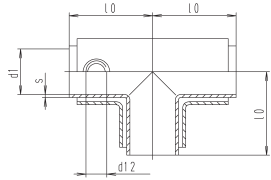
t-pieces, short, DIN 11852 (for tubing acc. DIN 11850 line 2) (5111N)

DN	316 L polished Ident number	316 L matt Ident number
10	○ 151.04.120.0330	○ 151.04.220.0330
15	○ 151.06.120.0330	○ 151.06.220.0330
20	○ 151.07.120.0330	○ 151.07.220.0330
25	○ 151.08.120.0330	○ 151.08.220.0330
32	○ 151.09.120.0330	○ 151.09.220.0330
40	○ 151.10.120.0330	○ 151.10.220.0330
50	○ 151.11.120.0330	○ 151.11.220.0330
65	○ 151.12.120.0300	○ 151.12.220.0300
80	○ 151.14.120.0300	○ 151.14.220.0300
100	○ 151.15.120.0300	○ 151.15.220.0300
125	○ 151.16.120.0300	○ 151.16.220.0300
150	○ 151.17.120.0300	○ 151.17.220.0300
200	○ 151.18.120.0300	○ 151.18.220.0300
250	○ 151.19.120.0300	○ 151.19.220.0300

t-pieces, short, DIN 11852 (for tubing acc. DIN 11850 line 2) (5111N)

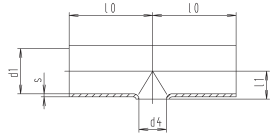
DN	316 L polished Ident number	316 L matt Ident number
10	○ 151.04.120.0317	○ 151.04.220.0317
15	○ 151.06.120.0317	○ 151.06.220.0317
20	○ 151.07.120.0317	○ 151.07.220.0317
25	○ 151.08.120.0317	○ 151.08.220.0317
32	○ 151.09.120.0317	○ 151.09.220.0317
40	○ 151.10.120.0317	○ 151.10.220.0317
50	○ 151.11.120.0317	○ 151.11.220.0317
65	○ 151.12.120.0301	○ 151.12.220.0301
80	○ 151.14.120.0301	○ 151.14.220.0301
100	○ 151.15.120.0301	○ 151.15.220.0301
125	○ 151.16.120.0301	○ 151.16.220.0301
150	○ 151.17.120.0301	○ 151.17.220.0301
200	○ 151.18.120.0301	○ 151.18.220.0301
250	○ 151.19.120.0301	○ 151.19.220.0301

t-pieces, with heating jacket (for tubing acc. DIN 11850 line 2)



DN	d1	d12	l0	s	weight (kg)
25	26	R1/2"	50	1.5	0,27
32	32	R1/2"	55	1.5	0,38
40	38	R1/2"	60	1.5	0,54
50	50	R1/2"	70	1.5	0,95
65	66	R3/4"	80	2	1,57
80	81	R3/4"	90	2	2,57
100	100	R3/4"	100	2	4,43

t-pieces, short, red. DIN 11852 (for tub. acc. DIN 11850 line 2) (5227N)



DN	d1	d4	l0	l1	s	weight (kg)
25/20	26	20	50	16	1.5	0,090
32/25	32	26	55	19	1.5	0,120
40/25	38	26	60	22	1.5	1,150
40/32	38	32	60	22.5	1.5	0,150
50/25	50	26	70	28	1.5	0,240
50/40	50	38	70	29	1.5	0,240
65/25	66	26	80	38	2	0,470
65/40	66	38	80	37.5	2	0,460
65/50	66	50	80	38.5	2	0,460
80/25	81	26	90	45.5	2	0,700
80/40	81	38	90	45	2	0,700
80/50	81	50	90	46	2	0,680
80/65	81	66	90	47.5	2	0,680
100/25	100	26	100	56	2	1,000
100/40	100	38	100	56	2	1,000
100/50	100	50	100	55.5	2	1,000
100/65	100	66	100	57	2	0,970
100/80	100	81	100	57	2	0,970
125/25	125	26	187	69.5	2	2,000
125/40	125	38	187	69.5	2	2,000
125/50	125	50	187	69.5	2	2,000
125/65	125	66	187.5	69.5	2	1,970
125/80	125	81	187.5	69.5	2	1,970
125/100	125	100	187.5	70.5	2	1,970
150/25	150	26	225	82	2	2,950
150/40	150	38	225	82	2	2,950
150/50	150	50	225	82	2	2,950
150/65	150	66	225	82	2	2,890
150/80	150	81	225	82	2	2,890
150/100	150	100	225	83	2	2,890
150/125	150	125	225	82	2	2,890

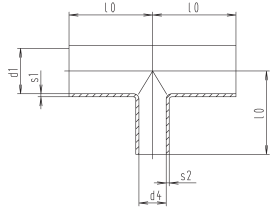
t-pieces, short, DIN 11852 (for tubing acc. DIN 11850 line 2) (311IN)

DN	304 polished Ident number	304 matt Ident number	316 L polished Ident number	316 L matt Ident number
25	○ 151.08.110.0050	○ 151.08.210.0050	○ 151.08.120.0050	○ 151.08.220.0050
32	○ 151.09.110.0050	○ 151.09.210.0050	○ 151.09.120.0050	○ 151.09.220.0050
40	○ 151.10.110.0050	○ 151.10.210.0050	○ 151.10.120.0050	○ 151.10.220.0050
50	○ 151.11.110.0050	○ 151.11.210.0050	○ 151.11.120.0050	○ 151.11.220.0050
65	○ 151.12.110.0050	○ 151.12.210.0050	○ 151.12.120.0050	○ 151.12.220.0050
80	○ 151.14.110.0050	○ 151.14.210.0050	○ 151.14.120.0050	○ 151.14.220.0050
100	○ 151.15.110.0050	○ 151.15.210.0050	○ 151.15.120.0050	○ 151.15.220.0050

t-pieces, short, red. DIN 11852 (for tub. acc. DIN 11850 line 2) (5227N)

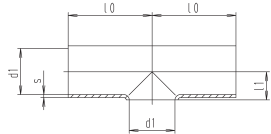
DN	Ident number	Ident number	Ident number	Ident number
25/20	○ 151.26.110.0021	○ 151.26.210.0021	● 151.26.120.0021	○ 151.26.220.0021
32/25	○ 151.30.110.0021	○ 151.30.210.0021	● 151.30.120.0021	○ 151.30.220.0021
40/25	○ 151.34.110.0021	○ 151.34.210.0021	● 151.34.120.0021	○ 151.34.220.0021
40/32	○ 151.35.110.0021	○ 151.35.210.0021	○ 151.35.120.0021	○ 151.35.220.0021
50/25	○ 151.39.110.0021	○ 151.39.210.0021	● 151.39.120.0021	○ 151.39.220.0021
50/40	○ 151.41.110.0021	○ 151.41.210.0021	● 151.41.120.0021	○ 151.41.220.0021
65/25	○ 151.45.110.0021	○ 151.45.210.0021	● 151.45.120.0021	○ 151.45.220.0021
65/40	○ 151.47.110.0021	○ 151.47.210.0021	● 151.47.120.0021	○ 151.47.220.0021
65/50	○ 151.48.110.0021	○ 151.48.210.0021	○ 151.48.120.0021	○ 151.48.220.0021
80/25	○ 151.60.110.0021	○ 151.60.210.0021	● 151.60.120.0021	○ 151.60.220.0021
80/40	○ 151.62.110.0021	○ 151.62.210.0021	○ 151.62.120.0021	○ 151.62.220.0021
80/50	○ 151.63.110.0021	○ 151.63.210.0021	● 151.63.120.0021	○ 151.63.220.0021
80/65	● 151.64.110.0006	● 151.64.210.0006	● 151.64.120.0006	● 151.64.220.0006
100/25	○ 151.69.110.0021	○ 151.69.210.0021	○ 151.69.120.0021	○ 151.69.220.0021
100/40	○ 151.71.110.0021	○ 151.71.210.0021	○ 151.71.120.0021	○ 151.71.220.0021
100/50	○ 151.72.110.0021	○ 151.72.210.0021	○ 151.72.120.0021	○ 151.72.220.0021
100/65	● 151.73.110.0006	● 151.73.210.0006	● 151.73.120.0006	● 151.73.220.0006
100/80	● 151.75.110.0006	● 151.75.210.0006	○ 151.75.120.0006	○ 151.75.220.0006
125/25	○ 151.79.110.0021	○ 151.79.210.0021	○ 151.79.120.0021	○ 151.79.220.0021
125/40	○ 151.81.110.0021	○ 151.81.210.0021	○ 151.81.120.0021	○ 151.81.220.0021
125/50	○ 151.82.110.0021	○ 151.82.210.0021	○ 151.82.120.0021	○ 151.82.220.0021
125/65	○ 151.83.110.0006	○ 151.83.210.0006	○ 151.83.120.0006	○ 151.83.220.0006
125/80	○ 151.85.110.0006	○ 151.85.210.0006	○ 151.85.120.0006	○ 151.85.220.0006
125/100	○ 151.86.110.0006	○ 151.86.210.0006	○ 151.86.120.0006	○ 151.86.220.0006
150/25	○ 151.90.110.0021	○ 151.90.210.0021	○ 151.90.120.0021	○ 151.90.220.0021
150/40	○ 151.92.110.0021	○ 151.92.210.0021	○ 151.92.120.0021	○ 151.92.220.0021
150/50	○ 151.93.110.0021	○ 151.93.210.0021	○ 151.93.120.0021	○ 151.93.220.0021
150/65	○ 151.94.110.0006	○ 151.94.210.0006	○ 151.94.120.0006	○ 151.94.220.0006
150/80	○ 151.96.110.0006	○ 151.96.210.0006	○ 151.96.120.0006	○ 151.96.220.0006
150/100	○ 151.97.110.0006	○ 151.97.210.0006	○ 151.97.120.0006	○ 151.97.220.0006
150/125	○ 151.98.110.0006	○ 151.98.210.0006	○ 151.98.120.0006	○ 151.98.220.0006

t-pieces, reduced, DIN 11852 (for tub. acc. DIN 11850 line 2) (5228N)



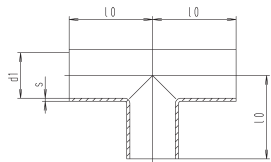
DN	d1	d4	l0	s1	s2	weight (kg)
25/20	26	20	50	1.5	1.5	0,120
32/25	32	26	55	1.5	1.5	0,150
40/25	38	26	60	1.5	1.5	0,180
40/32	38	32	60	1.5	1.5	0,200
50/25	50	26	70	1.5	1.5	0,270
50/40	50	38	70	1.5	1.5	0,310
65/25	66	26	80	2	1.5	0,500
65/40	66	38	80	2	1.5	0,510
65/50	66	50	80	2	1.5	0,600
80/25	81	26	90	2	1.5	0,730
80/40	81	38	90	2	1.5	0,740
80/50	81	50	90	2	1.5	0,760
80/65	81	66	90	2	2	0,840
100/25	100	26	100	2	1.5	1,020
100/40	100	38	100	2	1.5	1,060
100/50	100	50	100	2	1.5	1,080
100/65	100	66	100	2	2	1,170
100/80	100	81	100	2	2	1,240
125/25	125	26	187	2	1.5	2,020
125/40	125	38	187	2	1.5	2,040
125/50	125	50	187	2	1.5	2,070
125/65	125	66	187	2	2	2,080
125/80	125	81	187	2	2	2,170
125/100	125	100	187	2	2	2,220
150/25	150	26	225	2	1.5	2,980
150/40	150	38	225	2	1.5	2,990
150/50	150	50	225	2	1.5	3,020
150/65	150	66	225	2	2	3,030
150/80	150	81	225	2	2	3,090
150/100	150	100	225	2	2	3,180
150/125	150	125	225	2	2	3,390

t-pieces, short, (for tubing similar DIN 11850) (5111)



DN	d1	l0	l1	s	weight (kg)
10	9	35	6.5	1.5	0,020
15	15	35	9.5	1.5	0,040
20	19	40	12	1.5	0,070
25	25	50	15.5	1.5	0,090
32	31	55	19	1.5	0,120
40	37	60	23.5	1.5	0,150
50	49	70	30	1.5	0,240

t-pieces, (for tubing similar DIN 11850)



DN	d1	l0	s	weight (kg)
10	9	35	1.5	0,030
15	15	35	1.5	0,050
20	19	40	1.5	0,080
25	25	50	1.5	0,100
32	31	55	1.5	0,130
40	37	60	1.5	0,210
50	49	70	1.5	0,290

DN	304 polished Ident number	304 matt Ident number	316 L polished Ident number	316 L matt Ident number
25/20	○ 151.26.110.0022	○ 151.26.210.0022	○ 151.26.120.0022	○ 151.26.220.0022
32/25	○ 151.30.110.0022	○ 151.30.210.0022	○ 151.30.120.0022	○ 151.30.220.0022
40/25	○ 151.34.110.0022	○ 151.34.210.0022	● 151.34.120.0022	○ 151.34.220.0022
40/32	○ 151.35.110.0022	○ 151.35.210.0022	○ 151.35.120.0022	○ 151.35.220.0022
50/25	○ 151.39.110.0022	○ 151.39.210.0022	● 151.39.120.0022	○ 151.39.220.0022
50/40	○ 151.41.110.0022	○ 151.41.210.0022	○ 151.41.120.0022	○ 151.41.220.0022
65/25	○ 151.45.110.0022	○ 151.45.210.0022	○ 151.45.120.0022	○ 151.45.220.0022
65/40	○ 151.47.110.0022	○ 151.47.210.0022	○ 151.47.120.0022	○ 151.47.220.0022
65/50	○ 151.48.110.0022	○ 151.48.210.0022	○ 151.48.120.0022	○ 151.48.220.0022
80/25	○ 151.60.110.0022	○ 151.60.210.0022	○ 151.60.120.0022	○ 151.60.220.0022
80/40	○ 151.62.110.0022	○ 151.62.210.0022	○ 151.62.120.0022	○ 151.62.220.0022
80/50	○ 151.63.110.0022	○ 151.63.210.0022	○ 151.63.120.0022	○ 151.63.220.0022
80/65	● 151.64.110.0007	● 151.64.210.0007	● 151.64.120.0007	● 151.64.220.0007
100/25	○ 151.69.110.0022	○ 151.69.210.0022	○ 151.69.120.0022	○ 151.69.220.0022
100/40	○ 151.71.110.0022	○ 151.71.210.0022	○ 151.71.120.0022	○ 151.71.220.0022
100/50	○ 151.72.110.0022	○ 151.72.210.0022	○ 151.72.120.0022	○ 151.72.220.0022
100/65	● 151.73.110.0007	● 151.73.210.0007	○ 151.73.120.0007	○ 151.73.220.0007
100/80	● 151.75.110.0007	● 151.75.210.0007	● 151.75.120.0007	○ 151.75.220.0007
125/25	○ 151.79.110.0022	○ 151.79.210.0022	○ 151.79.120.0022	○ 151.79.220.0022
125/40	○ 151.81.110.0022	○ 151.81.210.0022	○ 151.81.120.0022	○ 151.81.220.0022
125/50	○ 151.82.110.0022	○ 151.82.210.0022	○ 151.82.120.0022	○ 151.82.220.0022
125/65	○ 151.83.110.0007	○ 151.83.210.0007	○ 151.83.120.0007	○ 151.83.220.0007
125/80	○ 151.85.110.0007	○ 151.85.210.0007	○ 151.85.120.0007	○ 151.85.220.0007
125/100	○ 151.86.110.0007	○ 151.86.210.0007	○ 151.86.120.0007	○ 151.86.220.0007
150/25	○ 151.90.110.0022	○ 151.90.210.0022	○ 151.90.120.0022	○ 151.90.220.0022
150/40	○ 151.92.110.0022	○ 151.92.210.0022	○ 151.92.120.0022	○ 151.92.220.0022
150/50	○ 151.93.110.0022	○ 151.93.210.0022	○ 151.93.120.0022	○ 151.93.220.0022
150/65	○ 151.94.110.0007	○ 151.94.210.0007	○ 151.94.120.0007	○ 151.94.220.0007
150/80	○ 151.96.110.0007	○ 151.96.210.0007	○ 151.96.120.0007	○ 151.96.220.0007
150/100	○ 151.97.110.0007	○ 151.97.210.0007	○ 151.97.120.0007	○ 151.97.220.0007
150/125	○ 151.98.110.0007	○ 151.98.210.0007	○ 151.98.120.0007	○ 151.98.220.0007

t-pieces, reduced, DIN 11852 (for tub. acc. DIN 11850 line 2) (5228N)

DN	304 polished Ident number	304 matt Ident number	316 L polished Ident number	316 L matt Ident number
10	○ 151.04.110.0000	○ 151.04.210.0000	○ 151.04.120.0000	○ 151.04.220.0000
15	● 151.06.110.0000	○ 151.06.210.0000	● 151.06.120.0000	● 151.06.220.0000
20	● 151.07.110.0000	○ 151.07.210.0000	● 151.07.120.0000	● 151.07.220.0000
25	● 151.08.110.0000	● 151.08.210.0000	● 151.08.120.0000	● 151.08.220.0000
32	● 151.09.110.0000	○ 151.09.210.0000	● 151.09.120.0000	● 151.09.220.0000
40	● 151.10.110.0000	● 151.10.210.0000	● 151.10.120.0000	● 151.10.220.0000
50	● 151.11.110.0000	● 151.11.210.0000	● 151.11.120.0000	● 151.11.220.0000

from DN 65 series 2

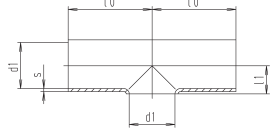
t-pieces, short, DIN 11852 (for tubing acc. DIN 11850 line 2) (5111N)

DN	304 polished Ident number	304 matt Ident number	316 L polished Ident number	316 L matt Ident number
10	● 151.04.110.0002	● 151.04.210.0002	● 151.04.120.0002	● 151.04.220.0002
15	● 151.06.110.0002	● 151.06.210.0002	● 151.06.120.0002	● 151.06.220.0002
20	● 151.07.110.0002	● 151.07.210.0002	● 151.07.120.0002	● 151.07.220.0002
25	● 151.08.110.0002	● 151.08.210.0002	● 151.08.120.0002	● 151.08.220.0002
32	● 151.09.110.0002	● 151.09.210.0002	● 151.09.120.0002	● 151.09.220.0002
40	● 151.10.110.0002	● 151.10.210.0002	● 151.10.120.0002	● 151.10.220.0002
50	● 151.11.110.0002	● 151.11.210.0002	● 151.11.120.0002	● 151.11.220.0002

from DN 65 series 2

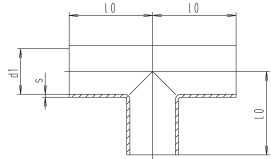
t-pieces, short, DIN 11852 (for tubing acc. DIN 11850 line 2) (5111N)

t-pieces, short, (for tubing similar DIN 11850) (5111)



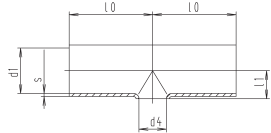
DN	d1	l0	l1	s	weight (kg)
10	9	35	6.5	1.5	0,020
15	15	35	9.5	1.5	0,040
20	19	40	12	1.5	0,070
25	25	50	15.5	1.5	0,090
32	31	55	19	1.5	0,120
40	37	60	23.5	1.5	0,150
50	49	70	30	1.5	0,240

t-pieces, (for tubing similar DIN 11850)



DN	d1	l0	s	weight (kg)
10	9	35	1.5	0,030
15	15	35	1.5	0,050
20	19	40	1.5	0,080
25	25	50	1.5	0,100
32	31	55	1.5	0,130
40	37	60	1.5	0,210
50	49	70	1.5	0,290

t-pieces, short, reduced (for tubing similar DIN 11850) (5227)



DN	d1	d4	l0	l1	s	weight (kg)
25/20	25	19	50	16	1.5	0,090
32/25	31	25	55	20.5	1.5	0,120
40/25	37	25	60	23.5	1.5	0,150
40/32	37	31	60	23	1.5	0,150
50/25	49	25	70	29	1.5	0,240
50/40	49	37	70	29	1.5	0,240
65/25	66	25	80	38	2	0,470
65/40	66	37	80	39.5	2	0,460
65/50	66	49	80	39	2	0,460
80/25	81	25	90	45.5	2	0,700
80/40	81	37	90	46.5	2	0,700
80/50	81	49	90	47	2	0,680
100/25	100	25	100	56	2	1,000
100/40	100	37	100	56	2	1,000
100/50	100	49	100	56	2	1,000
125/25	125	25	187	69.5	2	2,000
125/40	125	37	187	69.5	2	2,000
125/50	125	49	187	69.5	2	2,000
150/25	150	25	225	82	2	2,950
150/40	150	37	225	82	2	2,950
150/50	150	49	225	82	2	2,950

t-pieces, short, DIN 11852 (for tubing acc. DIN 11850 line 2) (5111N)

DN	316 L polished		316 L matt	
	Ident number		Ident number	
10	○ 151.04.120.0300	○ 151.04.120.0300	○ 151.04.220.0300	○ 151.04.220.0300
15	○ 151.06.120.0300	○ 151.06.120.0300	○ 151.06.220.0300	○ 151.06.220.0300
20	○ 151.07.120.0300	○ 151.07.120.0300	○ 151.07.220.0300	○ 151.07.220.0300
25	○ 151.08.120.0300	○ 151.08.120.0300	○ 151.08.220.0300	○ 151.08.220.0300
32	○ 151.09.120.0300	○ 151.09.120.0300	○ 151.09.220.0300	○ 151.09.220.0300
40	○ 151.10.120.0300	○ 151.10.120.0300	○ 151.10.220.0300	○ 151.10.220.0300
50	○ 151.11.120.0300	○ 151.11.120.0300	○ 151.11.220.0300	○ 151.11.220.0300

from DN 65 see series 2

t-pieces, short, DIN 11852 (for tubing acc. DIN 11850 line 2) (5111N)

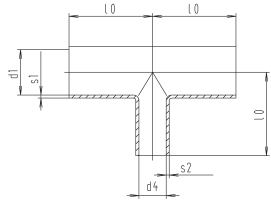
DN	316 L polished		316 L matt	
	Ident number		Ident number	
10	○ 151.04.120.0302	○ 151.04.120.0302	○ 151.04.220.0302	○ 151.04.220.0302
15	○ 151.06.120.0302	○ 151.06.120.0302	○ 151.06.220.0302	○ 151.06.220.0302
20	○ 151.07.120.0302	○ 151.07.120.0302	○ 151.07.220.0302	○ 151.07.220.0302
25	○ 151.08.120.0302	○ 151.08.120.0302	○ 151.08.220.0302	○ 151.08.220.0302
32	○ 151.09.120.0302	○ 151.09.120.0302	○ 151.09.220.0302	○ 151.09.220.0302
40	○ 151.10.120.0302	○ 151.10.120.0302	○ 151.10.220.0302	○ 151.10.220.0302
50	○ 151.11.120.0302	○ 151.11.120.0302	○ 151.11.220.0302	○ 151.11.220.0302

from DN 65 see series 2

t-pieces, short, reduced (for tubing similar DIN 11850) (5227)

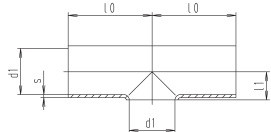
DN	Ident number	Ident number	Ident number	Ident number
25/20	● 151.26.110.0006	○ 151.26.210.0006	● 151.26.120.0006	○ 151.26.220.0006
32/25	○ 151.30.110.0006	○ 151.30.210.0006	● 151.30.120.0006	● 151.30.220.0006
40/25	● 151.34.110.0006	● 151.34.210.0006	● 151.34.120.0006	○ 151.34.220.0006
40/32	● 151.35.110.0006	● 151.35.210.0006	○ 151.35.120.0006	○ 151.35.220.0006
50/25	● 151.39.110.0006	● 151.39.210.0006	● 151.39.120.0006	● 151.39.220.0006
50/40	● 151.41.110.0006	● 151.41.210.0006	● 151.41.120.0006	● 151.41.220.0006
65/25	● 151.45.110.0006	● 151.45.210.0006	● 151.45.120.0006	○ 151.45.220.0006
65/40	● 151.47.110.0006	● 151.47.210.0006	○ 151.47.120.0006	○ 151.47.220.0006
65/50	● 151.48.110.0006	● 151.48.210.0006	● 151.48.120.0006	● 151.48.220.0006
80/25	● 151.60.110.0006	● 151.60.210.0006	● 151.60.120.0006	○ 151.60.220.0006
80/40	○ 151.62.110.0006	● 151.62.210.0006	● 151.62.120.0006	● 151.62.220.0006
80/50	● 151.63.110.0006	● 151.63.210.0006	● 151.63.120.0006	○ 151.63.220.0006
100/25	○ 151.69.110.0006	● 151.69.210.0006	○ 151.69.120.0006	○ 151.69.220.0006
100/40	● 151.71.110.0006	● 151.71.210.0006	○ 151.71.120.0006	○ 151.71.220.0006
100/50	● 151.72.110.0006	● 151.72.210.0006	● 151.72.120.0006	○ 151.72.220.0006
125/25	○ 151.79.110.0006	○ 151.79.210.0006	○ 151.79.120.0006	○ 151.79.220.0006
125/40	○ 151.81.110.0006	○ 151.81.210.0006	○ 151.81.120.0006	○ 151.81.220.0006
125/50	○ 151.82.110.0006	○ 151.82.210.0006	○ 151.82.120.0006	○ 151.82.220.0006
150/25	○ 151.90.110.0006	○ 151.90.210.0006	○ 151.90.120.0006	○ 151.90.220.0006
150/40	○ 151.92.110.0006	○ 151.92.210.0006	○ 151.92.120.0006	○ 151.92.220.0006
150/50	○ 151.93.110.0006	○ 151.93.210.0006	○ 151.93.120.0006	○ 151.93.220.0006

t-pieces, reduced (for tubing similar DIN 11850) (5228)



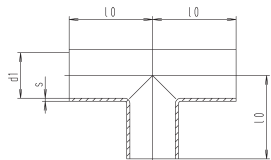
DN	d1	d4	l0	s1	s2	weight (kg)
25/20	25	19	50	1.5	1.5	0,120
32/25	31	25	55	1.5	1.5	0,150
40/25	37	25	60	1.5	1.5	0,180
40/32	37	31	60	1.5	1.5	0,200
50/25	49	25	70	1.5	1.5	0,270
50/40	49	37	70	1.5	1.5	0,310
65/25	66	25	80	2	1.5	0,500
65/40	66	37	80	2	1.5	0,510
65/50	66	49	80	2	1.5	0,600
80/25	81	25	90	2	1.5	0,730
80/40	81	37	90	2	1.5	0,740
80/50	81	49	90	2	1.5	0,760
100/25	100	25	100	2	1.5	1,020
100/40	100	37	100	2	1.5	1,060
100/50	100	49	100	2	1.5	1,080
125/25	125	25	187	2	1.5	2,020
125/40	125	37	187	2	1.5	2,040
125/50	125	49	187	2	1.5	2,070
150/25	150	25	225	2	1.5	2,980
150/40	150	37	225	2	1.5	2,990
150/50	150	49	225	2	1.5	3,020

t-pieces, short, inch (5111Z)



DN	d1	l0	l1	s	weight (kg)
1"	22.1	44	14	1.65	0,086
1½"	34.8	64	22	1.65	0,178
2"	47.5	89	29	1.65	0,350
2½"	60.2	114	35	1.65	0,520
3"	72.9	134	41	1.65	0,770
4"	97.4	174	55	2.11	1,590

t-pieces inch (5222Z)



DN	d1	l0	s	weight (kg)
1"	22.1	44	1.65	0,110
1½"	34.8	64	1.65	0,240
2"	47.5	89	1.65	0,470
2½"	60.2	114	1.65	0,700
3"	72.9	134	1.65	1,040
4"	97.4	174	2.11	2,130

t-pieces, reduced (for tubing similar DIN 11850) (5228)

DN	304 polished Ident number	304 matt Ident number	316 L polished Ident number	316 L matt Ident number
25/20	○ 151.26.110.0007	○ 151.26.210.0007	● 151.26.120.0007	○ 151.26.220.0007
32/25	● 151.30.110.0007	○ 151.30.210.0007	● 151.30.120.0007	○ 151.30.220.0007
40/25	● 151.34.110.0007	● 151.34.210.0007	● 151.34.120.0007	○ 151.34.220.0007
40/32	● 151.35.110.0007	● 151.35.210.0007	● 151.35.120.0007	○ 151.35.220.0007
50/25	● 151.39.110.0007	● 151.39.210.0007	● 151.39.120.0007	● 151.39.220.0007
50/40	● 151.41.110.0007	● 151.41.210.0007	● 151.41.120.0007	○ 151.41.220.0007
65/25	○ 151.45.110.0007	● 151.45.210.0007	● 151.45.120.0007	○ 151.45.220.0007
65/40	● 151.47.110.0007	● 151.47.210.0007	● 151.47.120.0007	○ 151.47.220.0007
65/50	● 151.48.110.0007	● 151.48.210.0007	● 151.48.120.0007	○ 151.48.220.0007
80/25	○ 151.60.110.0007	○ 151.60.210.0007	● 151.60.120.0007	○ 151.60.220.0007
80/40	● 151.62.110.0007	○ 151.62.210.0007	● 151.62.120.0007	○ 151.62.220.0007
80/50	● 151.63.110.0007	● 151.63.210.0007	● 151.63.120.0007	○ 151.63.220.0007
100/25	○ 151.69.110.0007	○ 151.69.210.0007	○ 151.69.120.0007	○ 151.69.220.0007
100/40	○ 151.71.110.0007	○ 151.71.210.0007	● 151.71.120.0007	○ 151.71.220.0007
100/50	● 151.72.110.0007	● 151.72.210.0007	○ 151.72.120.0007	○ 151.72.220.0007
125/25	○ 151.79.110.0007	○ 151.79.210.0007	○ 151.79.120.0007	○ 151.79.220.0007
125/40	○ 151.81.110.0007	○ 151.81.210.0007	○ 151.81.120.0007	○ 151.81.220.0007
125/50	○ 151.82.110.0007	○ 151.82.210.0007	○ 151.82.120.0007	○ 151.82.220.0007
150/25	○ 151.90.110.0007	○ 151.90.210.0007	○ 151.90.120.0007	○ 151.90.220.0007
150/40	○ 151.92.110.0007	○ 151.92.210.0007	○ 151.92.120.0007	○ 151.92.220.0007
150/50	○ 151.93.110.0007	○ 151.93.210.0007	○ 151.93.120.0007	○ 151.93.220.0007

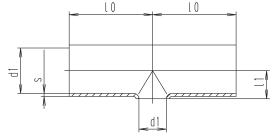
t-pieces, short, DIN 11852 (for tubing acc. DIN 11850 line 2) (5111N)

DN	304 polished Ident number	304 matt Ident number	316 L polished Ident number	316 L matt Ident number
1"	○ 153.08.110.0004	○ 153.08.210.0004	○ 153.08.120.0004	○ 153.08.220.0004
1½"	○ 153.10.110.0004	○ 153.10.210.0004	○ 153.10.120.0004	○ 153.10.220.0004
2"	○ 153.11.110.0004	○ 153.11.210.0004	○ 153.11.120.0004	○ 153.11.220.0004
2½"	○ 153.12.110.0004	○ 153.12.210.0004	○ 153.12.120.0004	○ 153.12.220.0004
3"	○ 153.13.110.0004	○ 153.13.210.0004	○ 153.13.120.0004	○ 153.13.220.0004
4"	○ 153.15.110.0004	○ 153.15.210.0004	○ 153.15.120.0004	○ 153.15.220.0004

t-pieces, short, DIN 11852 (for tubing acc. DIN 11850 line 2) (5111N)

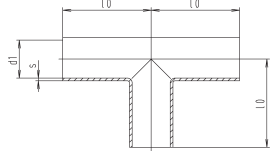
DN	304 polished Ident number	304 matt Ident number	316 L polished Ident number	316 L matt Ident number
1"	○ 153.08.110.0005	○ 153.08.210.0005	○ 153.08.120.0005	○ 153.08.220.0005
1½"	○ 153.10.110.0005	○ 153.10.210.0005	○ 153.10.120.0005	○ 153.10.220.0005
2"	○ 153.11.110.0005	○ 153.11.210.0005	○ 153.11.120.0005	○ 153.11.220.0005
2½"	○ 153.12.110.0005	○ 153.12.210.0005	○ 153.12.120.0005	○ 153.12.220.0005
3"	○ 153.13.110.0005	○ 153.13.210.0005	○ 153.13.120.0005	○ 153.13.220.0005
4"	○ 153.15.110.0005	○ 153.15.210.0005	○ 153.15.120.0005	○ 153.15.220.0005

t-pieces, short, SMS (511S)



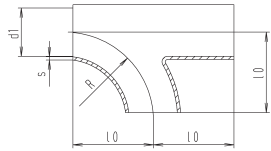
DN	dI	l0	lI	s	weight (kg)
25	22.6	55	14	1.2	0,069
32	29.6	64	18	1.2	0,144
38	35.6	70	22	1.2	0,145
51	48.6	82	29	1.2	0,220
63,5	60.3	105	35	1.6	0,420
76	72	110	41	2	0,735
101,6	97.6	150	55	2	1,120

t-pieces, SMS (522S)



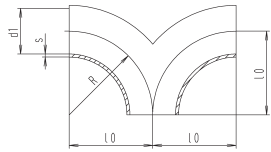
DN	dI	l0	s	weight (kg)
25	22.6	55	1.2	0,098
32	29.6	64	1.2	0,168
38	35.6	70	1.2	0,200
51	48.6	82	1.2	0,300
63,5	60.3	105	1.6	0,590
76	72	110	2	0,990
101,6	97.6	150	2	1,590

t-bend (for tubing acc. DIN 11850 line 2) (572N)



DN	dI	l0	R	s	weight (kg)
15	16	35	35	1.5	0,070
20	20	40	40	1.5	0,090
25	26	50	50	1.5	0,116
32	32	55	55	1.5	0,160
40	38	60	60	1.5	0,206
50	50	70	70	1.5	0,335
65	66	80	80	2	0,620
80	81	90	90	2	0,850
100	100	100	100	2	1,620
125	125	187	187	2	2,710
150	150	225	225	2	3,880
200	200	300	300	2	8,800
250	250	375	375	2	14,100

y-joint for tubing acc. DIN 11850 line 2) (574N)



DN	dI	l0	R	s	weight (kg)
20	20	40	40	1.5	0,090
25	26	50	50	1.5	0,100
32	32	55	55	1.5	0,130
40	38	60	60	1.5	0,210
50	50	70	70	1.5	0,290
65	66	80	80	2	0,620
80	81	90	90	2	0,850
100	100	100	100	2	1,620
125	125	187	187	2	2,710
150	150	225	225	2	3,880
200	200	300	300	2	7,130
250	250	375	375	2	11,250

t-pieces, short, DIN 11852 (for tubing acc. DIN 11850 line 2) (511IN)

DN	304 polished Ident number	304 matt Ident number	316 L polished Ident number	316 L matt Ident number
25	○ 155.08.110.0002	○ 155.08.210.0002	○ 155.08.120.0002	○ 155.08.220.0002
32	○ 155.09.110.0002	○ 155.09.210.0002	○ 155.09.120.0002	○ 155.09.220.0002
38	○ 155.10.110.0002	○ 155.10.210.0002	○ 155.10.120.0002	○ 155.10.220.0002
51	○ 155.11.110.0002	○ 155.11.210.0002	○ 155.11.120.0002	○ 155.11.220.0002
63,5	○ 155.12.110.0002	○ 155.12.210.0002	○ 155.12.120.0002	○ 155.12.220.0002
76	○ 155.13.110.0002	○ 155.13.210.0002	○ 155.13.120.0002	○ 155.13.220.0002
101,6	○ 155.15.110.0002	○ 155.15.210.0002	○ 155.15.120.0002	○ 155.15.220.0002

t-pieces, short, DIN 11852 (for tubing acc. DIN 11850 line 2) (511IN)

DN	304 polished Ident number	304 matt Ident number	316 L polished Ident number	316 L matt Ident number
25	○ 155.08.110.0000	○ 155.08.210.0000	○ 155.08.120.0000	○ 155.08.220.0000
32	○ 155.09.110.0000	○ 155.09.210.0000	○ 155.09.120.0000	○ 155.09.220.0000
38	○ 155.10.110.0000	○ 155.10.210.0000	○ 155.10.120.0000	○ 155.10.220.0000
51	○ 155.11.110.0000	○ 155.11.210.0000	○ 155.11.120.0000	○ 155.11.220.0000
63,5	○ 155.12.110.0000	○ 155.12.210.0000	○ 155.12.120.0000	○ 155.12.220.0000
76	○ 155.13.110.0000	○ 155.13.210.0000	○ 155.13.120.0000	○ 155.13.220.0000
101,6	○ 155.15.110.0000	○ 155.15.210.0000	○ 155.15.120.0000	○ 155.15.220.0000

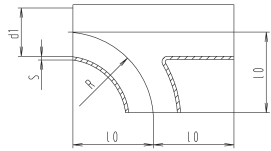
t-pieces, short, DIN 11852 (for tubing acc. DIN 11850 line 2) (511IN)

DN	304 polished Ident number	304 matt Ident number	316 L polished Ident number	316 L matt Ident number
15	○ 151.06.110.0019	○ 151.06.210.0019	○ 151.06.120.0019	○ 151.06.220.0019
20	● 151.07.110.0019	● 151.07.210.0019	● 151.07.120.0019	● 151.07.220.0019
25	● 151.08.110.0019	● 151.08.210.0019	● 151.08.120.0019	● 151.08.220.0019
32	● 151.09.110.0019	● 151.09.210.0019	● 151.09.120.0019	● 151.09.220.0019
40	● 151.10.110.0019	● 151.10.210.0019	● 151.10.120.0019	● 151.10.220.0019
50	● 151.11.110.0019	● 151.11.210.0019	● 151.11.120.0019	● 151.11.220.0019
65	● 151.12.110.0011	● 151.12.210.0011	● 151.12.120.0011	● 151.12.220.0011
80	● 151.14.110.0011	● 151.14.210.0011	● 151.14.120.0011	● 151.14.220.0011
100	● 151.15.110.0011	● 151.15.210.0011	● 151.15.120.0011	● 151.15.220.0011
125	○ 151.16.110.0011	○ 151.16.210.0011	○ 151.16.120.0011	○ 151.16.220.0011
150	○ 151.17.110.0011	○ 151.17.210.0011	○ 151.17.120.0011	○ 151.17.220.0011
200	○ 151.18.110.0011	○ 151.18.210.0011	○ 151.18.120.0011	○ 151.18.220.0011
250	○ 151.19.110.0011	○ 151.19.210.0011	○ 151.19.120.0011	○ 151.19.220.0011

t-pieces, short, DIN 11852 (for tubing acc. DIN 11850 line 2) (511IN)

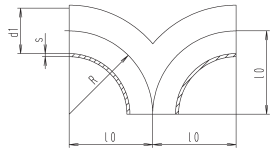
DN	304 polished Ident number	304 matt Ident number	316 L polished Ident number	316 L matt Ident number
20	● 151.07.110.0023	● 151.07.210.0023	● 151.07.120.0023	● 151.07.220.0023
25	● 151.08.110.0023	● 151.08.210.0023	● 151.08.120.0023	● 151.08.220.0023
32	● 151.09.110.0023	● 151.09.210.0023	● 151.09.120.0023	● 151.09.220.0023
40	● 151.10.110.0023	● 151.10.210.0023	● 151.10.120.0023	● 151.10.220.0023
50	● 151.11.110.0023	● 151.11.210.0023	● 151.11.120.0023	● 151.11.220.0023
65	● 151.12.110.0012	● 151.12.210.0012	● 151.12.120.0012	● 151.12.220.0012
80	● 151.14.110.0012	● 151.14.210.0012	● 151.14.120.0012	● 151.14.220.0012
100	● 151.15.110.0012	● 151.15.210.0012	● 151.15.120.0012	● 151.15.220.0012
125	○ 151.16.110.0012	○ 151.16.210.0012	○ 151.16.120.0012	○ 151.16.220.0012
150	○ 151.17.110.0012	○ 151.17.210.0012	○ 151.17.120.0012	○ 151.17.220.0012
200	○ 151.18.110.0012	○ 151.18.210.0012	○ 151.18.120.0012	○ 151.18.220.0012
250	○ 151.19.110.0012	○ 151.19.210.0012	○ 151.19.120.0012	○ 151.19.220.0012

t-bend (for tubing similar DIN 11850) (572)



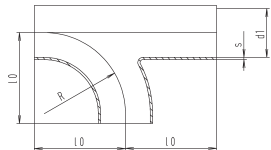
DN	dl	l0	R	s	weight (kg)
15	15	35	35	1.5	0,065
20	19	40	40	1.5	0,085
25	25	50	50	1.5	0,100
32	31	55	55	1.5	0,130
40	37	60	60	1.5	0,210
50	49	70	70	1.5	0,290

y-joint (for tubing similar DIN 11850) (574)



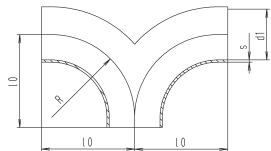
DN	dl	l0	R	s	weight (kg)
20	19	40	40	1.5	0,090
25	25	50	50	1.5	0,100
32	31	55	55	1.5	0,130
40	37	60	60	1.5	0,210
50	49	70	70	1.5	0,290

t-bend, inch (572Z)



DN	dl	l0	R	s	weight (kg)
1"	22.2	44	37.5	1.65	0,123
1½"	34.9	64	57	1.65	0,290
2"	47.6	89	76.5	1.65	0,535
2½"	60.3	114	95.3	1.65	0,860
3"	72.9	134	114.3	1.65	1,220
4"	97.6	174	152.5	2.11	2,250

y-joint, inch (574Z)



DN	dl	l0	R	s	weight (kg)
1"	22.2	44	37.5	1.65	0,110
1½"	34.9	64	57	1.65	0,230
2"	47.6	89	76.5	1.65	0,445
2½"	60.3	114	95.3	1.65	0,660
3"	72.9	134	114.2	1.65	0,995
4"	97.6	174	152.5	2.11	2,120

t-pieces, short, DIN 11852 (for tubing acc. DIN 11850 line 2) (511IN)

DN	304 polished Ident number	304 matt Ident number	316 L polished Ident number	316 L matt Ident number
15	○ 151.06.110.0011	○ 151.06.210.0011	○ 151.06.120.0011	○ 151.06.220.0011
20	○ 151.07.110.0011	○ 151.07.210.0011	● 151.07.120.0011	○ 151.07.220.0011
25	● 151.08.110.0011	● 151.08.210.0011	● 151.08.120.0011	● 151.08.220.0011
32	● 151.09.110.0011	● 151.09.210.0011	● 151.09.120.0011	● 151.09.220.0011
40	● 151.10.110.0011	○ 151.10.210.0011	● 151.10.120.0011	● 151.10.220.0011
50	● 151.11.110.0011	● 151.11.210.0011	● 151.11.120.0011	● 151.11.220.0011

from DN 65 series 2

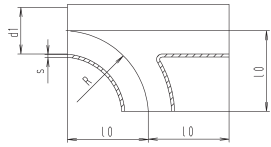
DN	304 polished Ident number	304 matt Ident number	316 L polished Ident number	316 L matt Ident number
20	○ 151.07.110.0012	○ 151.07.210.0012	○ 151.07.120.0012	○ 151.07.220.0012
25	● 151.08.110.0012	● 151.08.210.0012	● 151.08.120.0012	● 151.08.220.0012
32	● 151.09.110.0012	● 151.09.210.0012	● 151.09.120.0012	● 151.09.220.0012
40	● 151.10.110.0012	● 151.10.210.0012	● 151.10.120.0012	● 151.10.220.0012
50	● 151.11.110.0012	● 151.11.210.0012	● 151.11.120.0012	● 151.11.220.0012

from DN 65 series 2

DN	304 polished Ident number	304 matt Ident number	316 L polished Ident number	316 L matt Ident number
1"	○ 153.08.110.0008	○ 153.08.210.0008	○ 153.08.120.0008	○ 153.08.220.0008
1½"	○ 153.10.110.0008	○ 153.10.210.0008	○ 153.10.120.0008	○ 153.10.220.0008
2"	○ 153.11.110.0008	○ 153.11.210.0008	○ 153.11.120.0008	○ 153.11.220.0008
2½"	○ 153.12.110.0008	○ 153.12.210.0008	○ 153.12.120.0008	○ 153.12.220.0008
3"	○ 153.13.110.0008	○ 153.13.210.0008	○ 153.13.120.0008	○ 153.13.220.0008
4"	○ 153.15.110.0008	○ 153.15.210.0008	○ 153.15.120.0008	○ 153.15.220.0008

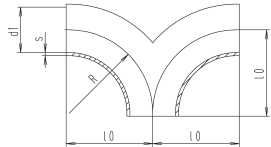
DN	304 polished Ident number	304 matt Ident number	316 L polished Ident number	316 L matt Ident number
1"	○ 153.08.110.0009	○ 153.08.210.0009	○ 153.08.120.0009	○ 153.08.220.0009
1½"	○ 153.10.110.0009	○ 153.10.210.0009	○ 153.10.120.0009	○ 153.10.220.0009
2"	○ 153.11.110.0009	○ 153.11.210.0009	○ 153.11.120.0009	○ 153.11.220.0009
2½"	○ 153.12.110.0009	○ 153.12.210.0009	○ 153.12.120.0009	○ 153.12.220.0009
3"	○ 153.13.110.0009	○ 153.13.210.0009	○ 153.13.120.0009	○ 153.13.220.0009
4"	○ 153.15.110.0009	○ 153.15.210.0009	○ 153.15.120.0009	○ 153.15.220.0009

t-bend, SMS (572S)



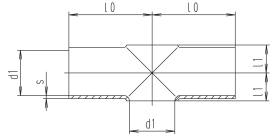
DN	dI	l0	R	s	weight (kg)
25	22.6	44	37.5	1.2	0,081
38	35.6	64	57	1.2	0,166
51	48.6	89	76.5	1.2	0,326
63,5	60.3	114	95.3	1.6	0,660
76	72.9	134	114.2	1.6	0,995
101,6	97.6	174	152.5	2	2,115

y-joint, SMS (574S)



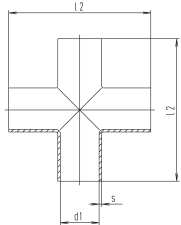
DN	dI	l0	R	s	weight (kg)
25	22.6	44	37.5	1.2	0,081
38	35.6	64	57	1.2	0,166
51	48.6	89	76.5	1.2	0,326
63,5	60.3	114	95.3	1.6	0,660
76	72.9	134	114.2	1.6	0,995
101,6	97.6	174	152.5	2	2,115

cross, short (for tubing acc. DIN 11850 line 2) (577N)



DN	dI	l0	l1	s	weight (kg)
25	26	50	16	1.5	0,090
32	32	55	19.5	1.5	0,120
40	38	60	23	1.5	0,150
50	50	70	30	1.5	0,240
65	66	80	40	2	0,460
80	81	90	47.5	2	0,680
100	100	100	58	2	0,920

cross, long (for tubing acc. DIN 11850 line 2) (576N)



DN	dI	l2	s	weight (kg)
15	16	70	1.5	0,070
20	20	80	1.5	0,100
25	26	100	1.5	0,110
32	32	110	1.5	0,140
40	38	120	1.5	0,270
50	50	140	1.5	0,340
65	66	160	2	0,780
80	81	180	2	1,020
100	100	200	2	2,320
125	125	375	2	3,450
150	150	450	2	4,870
200	200	600	2	8,740
250	250	750	2	13,490

t-pieces, short, DIN 11852 (for tubing acc. DIN 11850 line 2) (311IN)

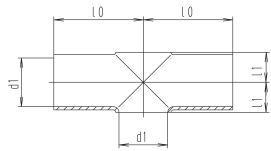
DN	304 polished Ident number	304 matt Ident number	316 L polished Ident number	316 L matt Ident number
25	○ 151.08.110.0028	○ 151.08.210.0028	○ 151.08.120.0028	○ 151.08.220.0028
38	○ 151.10.110.0028	○ 151.10.210.0028	○ 151.10.120.0028	○ 151.10.220.0028
51	○ 151.11.110.0028	○ 151.11.210.0028	○ 151.11.120.0028	○ 151.11.220.0028
63,5	○ 151.12.110.0028	○ 151.12.210.0028	○ 151.12.120.0028	○ 151.12.220.0028
76	○ 151.13.110.0028	○ 151.13.210.0028	○ 151.13.120.0028	○ 151.13.220.0028
101,6	○ 151.15.110.0028	○ 151.15.210.0028	○ 151.15.120.0028	○ 151.15.220.0028

DN	304 polished Ident number	304 matt Ident number	316 L polished Ident number	316 L matt Ident number
25	○ 151.08.110.0029	○ 151.08.210.0029	○ 151.08.120.0029	○ 151.08.220.0029
38	○ 151.10.110.0029	○ 151.10.210.0029	○ 151.10.120.0029	○ 151.10.220.0029
51	○ 151.11.110.0029	○ 151.11.210.0029	○ 151.11.120.0029	○ 151.11.220.0029
63,5	○ 151.12.110.0029	○ 151.12.210.0029	○ 151.12.120.0029	○ 151.12.220.0029
76	○ 151.13.110.0029	○ 151.13.210.0029	○ 151.13.120.0029	○ 151.13.220.0029
101,6	○ 151.15.110.0029	○ 151.15.210.0029	○ 151.15.120.0029	○ 151.15.220.0029

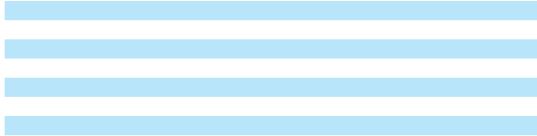
DN	304 polished Ident number	304 matt Ident number	316 L polished Ident number	316 L matt Ident number
25	○ 151.08.110.0031	○ 151.08.210.0031	○ 151.08.120.0031	○ 151.08.220.0031
32	○ 151.09.110.0031	○ 151.09.210.0031	○ 151.09.120.0031	○ 151.09.220.0031
40	○ 151.10.110.0031	○ 151.10.210.0031	○ 151.10.120.0031	○ 151.10.220.0031
50	○ 151.11.110.0031	○ 151.11.210.0031	○ 151.11.120.0031	○ 151.11.220.0031
65	● 151.12.110.0014	● 151.12.210.0014	○ 151.12.120.0014	○ 151.12.220.0014
80	○ 151.14.110.0014	○ 151.14.210.0014	○ 151.14.120.0014	○ 151.14.220.0014
100	● 151.15.110.0014	● 151.15.210.0014	○ 151.15.120.0014	○ 151.15.220.0014

DN	304 polished Ident number	304 matt Ident number	316 L polished Ident number	316 L matt Ident number
15	○ 151.06.110.0020	○ 151.06.210.0020	● 151.06.120.0020	○ 151.06.220.0020
20	○ 151.07.110.0020	○ 151.07.210.0020	○ 151.07.120.0020	○ 151.07.220.0020
25	○ 151.08.110.0020	○ 151.08.210.0020	○ 151.08.120.0020	● 151.08.220.0020
32	○ 151.09.110.0020	○ 151.09.210.0020	● 151.09.120.0020	● 151.09.220.0020
40	○ 151.10.110.0020	○ 151.10.210.0020	○ 151.10.120.0020	● 151.10.220.0020
50	○ 151.11.110.0020	○ 151.11.210.0020	● 151.11.120.0020	● 151.11.220.0020
65	● 151.12.110.0013	● 151.12.210.0013	● 151.12.120.0013	● 151.12.220.0013
80	● 151.14.110.0013	● 151.14.210.0013	● 151.14.120.0013	● 151.14.220.0013
100	○ 151.15.110.0013	○ 151.15.210.0013	○ 151.15.120.0013	○ 151.15.220.0013
125	○ 151.16.110.0013	○ 151.16.210.0013	○ 151.16.120.0013	○ 151.16.220.0013
150	○ 151.17.110.0013	○ 151.17.210.0013	○ 151.17.120.0013	○ 151.17.220.0013
200	○ 151.18.110.0013	○ 151.18.210.0013	○ 151.18.120.0013	○ 151.18.220.0013
250	○ 151.19.110.0013	○ 151.19.210.0013	○ 151.19.120.0013	○ 151.19.220.0013

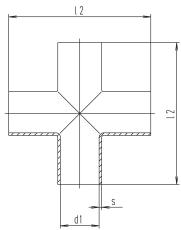
cross, short (for tubing similar DIN 11850) (577)



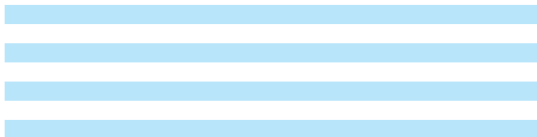
DN	d1	l0	l1	s	weight (kg)
15	15	35	9.5	1.5	0,040
20	19	40	12	1.5	0,070
25	25	50	15.5	1.5	0,090
32	31	55	19	1.5	0,120
40	37	60	23.5	1.5	0,150
50	49	70	30	1.5	0,240



cross, long (for tubing similar DIN 11850) (576)

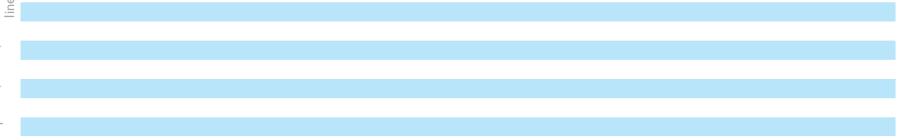


DN	d1	l2	s	weight (kg)
15	15	70	1.5	0,070
20	19	80	1.5	0,100
25	25	100	1.5	0,110
32	31	110	1.5	0,140
40	37	120	1.5	0,270
50	49	140	1.5	0,340



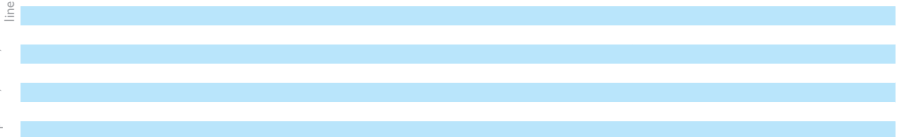
t-pieces, short, DIN 11852 (for tubing acc. DIN 11850 line 2) (5111N)

DN	304 polished Ident number	304 matt Ident number	316 L polished Ident number	316 L matt Ident number
15	○ 151.06.110.0014	○ 151.06.210.0014	○ 151.06.120.0014	○ 151.06.220.0014
20	○ 151.07.110.0014	○ 151.07.210.0014	○ 151.07.120.0014	○ 151.07.220.0014
25	● 151.08.110.0014	● 151.08.210.0014	● 151.08.120.0014	● 151.08.220.0014
32	● 151.09.110.0014	● 151.09.210.0014	● 151.09.120.0014	● 151.09.220.0014
40	● 151.10.110.0014	○ 151.10.210.0014	● 151.10.120.0014	○ 151.10.220.0014
50	● 151.11.110.0014	● 151.11.210.0014	● 151.11.120.0014	● 151.11.220.0014

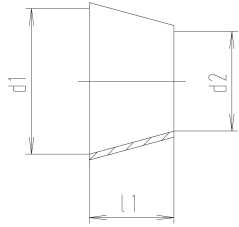


t-pieces, short, DIN 11852 (for tubing acc. DIN 11850 line 2) (5111N)

DN	304 polished Ident number	304 matt Ident number	316 L polished Ident number	316 L matt Ident number
15	● 151.06.110.0013	○ 151.06.210.0013	● 151.06.120.0013	○ 151.06.220.0013
20	● 151.07.110.0013	○ 151.07.210.0013	○ 151.07.120.0013	○ 151.07.220.0013
25	● 151.08.110.0013	● 151.08.210.0013	● 151.08.120.0013	● 151.08.220.0013
32	● 151.09.110.0013	● 151.09.210.0013	○ 151.09.120.0013	○ 151.09.220.0013
40	● 151.10.110.0013	● 151.10.210.0013	○ 151.10.120.0013	● 151.10.220.0013
50	● 151.11.110.0013	● 151.11.210.0013	● 151.11.120.0013	● 151.11.220.0013



reducer, concentric, DIN 11852 (for tubing acc. DIN 11850 line 2) (322)



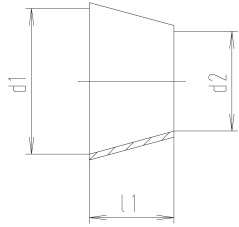
DN	d1	d2	l1	weight (kg)
15/10	16	10	11	0,010
20/10	20	10	18	0,010
20/15	20	16	7	0,010
25/10	26	10	28	0,020
25/15	26	16	18	0,020
25/20	26	20	11	0,010
32/20	32	20	22	0,020
32/25	32	26	11	0,020
40/15	38	16	40	0,040
40/20	38	20	33	0,040
40/25	38	26	22	0,030
40/32	38	32	11	0,040
50/25	50	26	44	0,080
50/32	50	32	33	0,080
50/40	50	38	22	0,090
65/25	66	26	73	0,130
65/32	66	32	62	0,120
65/40	66	38	51	0,110
65/50	66	50	29	0,090
80/25	81	26	100	0,200
80/32	81	32	89	0,180
80/40	81	38	78	0,160
80/50	81	50	56	0,120
80/65	81	66	27	0,110
100/50	100	50	90	0,290
100/65	100	66	61	0,280
100/80	100	81	34	0,170
125/50	125	50	135	0,530
125/65	125	66	106	0,440
125/80	125	81	79	0,410
125/100	125	100	45	0,550
150/65	150	66	151	0,730
150/80	150	81	124	0,610
150/100	150	100	90	0,450
150/125	150	125	45	0,400
200/65	200	66	241	-
200/80	200	81	214	-
200/100	200	100	180	1,240
200/125	200	125	135	1,000
200/150	200	150	90	0,790
250/80	250	81	304	-
250/100	250	100	270	-
250/125	250	125	225	-
250/150	250	150	180	-
250/200	250	200	90	1,007

DN	304 polished		304 matt		316 L polished		316 L matt	
	Ident number		Ident number		Ident number		Ident number	
15/10	● 131.21.110.0000	● 131.21.210.0000	● 131.21.120.0000	● 131.21.220.0000				
20/10	● 131.22.110.0000	● 131.22.210.0000	● 131.22.120.0000	● 131.22.220.0000				
20/15	● 131.23.110.0000	● 131.23.210.0000	● 131.23.120.0000	● 131.23.220.0000				
25/10	● 131.24.110.0000	● 131.24.210.0000	● 131.24.120.0000	● 131.24.220.0000				
25/15	● 131.25.110.0000	● 131.25.210.0000	● 131.25.120.0000	● 131.25.220.0000				
25/20	● 131.26.110.0000	● 131.26.210.0000	● 131.26.120.0000	● 131.26.220.0000				
32/20	● 131.29.110.0000	● 131.29.210.0000	● 131.29.120.0000	● 131.29.220.0000				
32/25	● 131.30.110.0000	● 131.30.210.0000	● 131.30.120.0000	● 131.30.220.0000				
40/15	● 131.32.110.0000	● 131.32.210.0000	● 131.32.120.0000	● 131.32.220.0000				
40/20	● 131.33.110.0000	● 131.33.210.0000	● 131.33.120.0000	● 131.33.220.0000				
40/25	● 131.34.110.0000	● 131.34.210.0000	● 131.34.120.0000	● 131.34.220.0000				
40/32	● 131.35.110.0000	● 131.35.210.0000	● 131.35.120.0000	● 131.35.220.0000				
50/25	● 131.39.110.0000	● 131.39.210.0000	● 131.39.120.0000	● 131.39.220.0000				
50/32	● 131.40.110.0000	● 131.40.210.0000	● 131.40.120.0000	● 131.40.220.0000				
50/40	● 131.41.110.0000	● 131.41.210.0000	● 131.41.120.0000	● 131.41.220.0000				
65/25	● 131.45.110.0000	● 131.45.210.0000	● 131.45.120.0000	● 131.45.220.0000				
65/32	● 131.46.110.0000	● 131.46.210.0000	● 131.46.120.0000	● 131.46.220.0000				
65/40	● 131.47.110.0000	● 131.47.210.0000	● 131.47.120.0000	● 131.47.220.0000				
65/50	● 131.48.110.0000	● 131.48.210.0000	● 131.48.120.0000	● 131.48.220.0000				
80/25	● 131.60.110.0000	● 131.60.210.0000	● 131.60.120.0000	● 131.60.220.0000				
80/32	● 131.61.110.0000	● 131.61.210.0000	● 131.61.120.0000	● 131.61.220.0000				
80/40	● 131.62.110.0000	● 131.62.210.0000	● 131.62.120.0000	● 131.62.220.0000				
80/50	● 131.63.110.0000	● 131.63.210.0000	● 131.63.120.0000	● 131.63.220.0000				
80/65	● 131.64.110.0000	● 131.64.210.0000	● 131.64.120.0000	● 131.64.220.0000				
100/50	● 131.72.110.0000	● 131.72.210.0000	● 131.72.120.0000	● 131.72.220.0000				
100/65	● 131.73.110.0000	● 131.73.210.0000	● 131.73.120.0000	● 131.73.220.0000				
100/80	● 131.75.110.0000	● 131.75.210.0000	● 131.75.120.0000	● 131.75.220.0000				
125/50	○ 131.82.110.0000	○ 131.82.210.0000	○ 131.82.120.0000	○ 131.82.220.0000				
125/65	● 131.83.110.0000	● 131.83.210.0000	● 131.83.120.0000	● 131.83.220.0000				
125/80	● 131.85.110.0000	● 131.85.210.0000	● 131.85.120.0000	● 131.85.220.0000				
125/100	● 131.86.110.0000	● 131.86.210.0000	● 131.86.120.0000	● 131.86.220.0000				
150/65	○ 131.94.110.0000	○ 131.94.210.0000	○ 131.94.120.0000	○ 131.94.220.0000				
150/80	● 131.96.110.0000	● 131.96.210.0000	● 131.96.120.0000	● 131.96.220.0000				
150/100	● 131.97.110.0000	● 131.97.210.0000	● 131.97.120.0000	● 131.97.220.0000				
150/125	● 131.98.110.0000	● 131.98.210.0000	● 131.98.120.0000	● 131.98.220.0000				
200/65	○ 131.9L.110.0000	○ 131.9L.210.0000	○ 131.9L.120.0000	○ 131.9L.220.0000				
200/80	○ 131.9N.110.0000	○ 131.9N.210.0000	○ 131.9N.120.0000	○ 131.9N.220.0000				
200/100	○ 131.9O.110.0000	○ 131.9O.210.0000	○ 131.9O.120.0000	○ 131.9O.220.0000				
200/125	○ 131.9P.110.0000	○ 131.9P.210.0000	○ 131.9P.120.0000	○ 131.9P.220.0000				
200/150	○ 131.9Q.110.0000	○ 131.9Q.210.0000	○ 131.9Q.120.0000	○ 131.9Q.220.0000				
250/80	○ 131.B3.110.0000	○ 131.B3.210.0000	○ 131.B3.120.0000	○ 131.B3.220.0000				
250/100	○ 131.B4.110.0000	○ 131.B4.210.0000	○ 131.B4.120.0000	○ 131.B4.220.0000				
250/125	○ 131.B5.110.0000	○ 131.B5.210.0000	○ 131.B5.120.0000	○ 131.B5.220.0000				
250/150	○ 131.B6.110.0000	○ 131.B6.210.0000	○ 131.B6.120.0000	○ 131.B6.220.0000				
250/200	○ 131.B7.110.0000	○ 131.B7.210.0000	○ 131.B7.120.0000	○ 131.B7.220.0000				

reducer, concentric, DIN 11852 (for tubing acc. DIN 11850 line 2) (322)

suitable for DIN 11850 series 1 as well

reducer, concentric, DIN 11852 (for tubing acc. DIN 11850 line 2) (322)



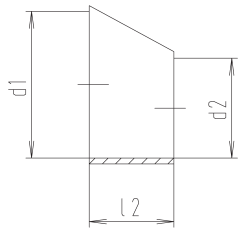
DN	d1	d2	l1	weight (kg)
15/10	16	10	11	0,010
20/10	20	10	18	0,010
20/15	20	16	7	0,010
25/10	26	10	28	0,020
25/15	26	16	18	0,020
25/20	26	20	11	0,010
32/20	32	20	22	0,020
32/25	32	26	11	0,020
40/15	38	16	40	0,040
40/20	38	20	33	0,040
40/25	38	26	22	0,030
40/32	38	32	11	0,040
50/25	50	26	44	0,080
50/32	50	32	33	0,080
50/40	50	38	22	0,090
65/25	66	26	73	0,130
65/32	66	32	62	0,120
65/40	66	38	51	0,110
65/50	66	50	29	0,090
80/25	81	26	100	0,200
80/32	81	32	89	0,180
80/40	81	38	78	0,160
80/50	81	50	56	0,120
80/65	81	66	27	0,110
100/50	100	50	90	0,290
100/65	100	66	61	0,280
100/80	100	81	34	0,170
125/50	125	50	135	0,530
125/65	125	66	106	0,440
125/80	125	81	79	0,410
125/100	125	100	45	0,550
150/65	150	66	151	0,730
150/80	150	81	124	0,610
150/100	150	100	90	0,450
150/125	150	125	45	0,400
200/65	200	66	241	-
200/80	200	81	214	-
200/100	200	100	180	1,240
200/125	200	125	135	1,000
200/150	200	150	90	0,790
250/80	250	81	304	-
250/100	250	100	270	-
250/125	250	125	225	-
250/150	250	150	180	-
250/200	250	200	90	1,007

reducer, concentric, DIN 11852 (for tubing acc. DIN 11850 line 2) (322)

DN	316 L polished		316 L matt	
	Ident number		Ident number	
15/10	o 131.21.120.0300		o 131.21.220.0300	
20/10	o 131.22.120.0300		o 131.22.220.0300	
20/15	o 131.23.120.0300		o 131.23.220.0300	
25/10	o 131.24.120.0300		o 131.24.220.0300	
25/15	o 131.25.120.0300		o 131.25.220.0300	
25/20	o 131.26.120.0300		o 131.26.220.0300	
32/20	o 131.29.120.0300		o 131.29.220.0300	
32/25	o 131.30.120.0300		o 131.30.220.0300	
40/15	o 131.32.120.0300		o 131.32.220.0300	
40/20	o 131.33.120.0300		o 131.33.220.0300	
40/25	o 131.34.120.0300		o 131.34.220.0300	
40/32	o 131.35.120.0300		o 131.35.220.0300	
50/25	o 131.39.120.0300		o 131.39.220.0300	
50/32	o 131.40.120.0300		o 131.40.220.0300	
50/40	o 131.41.120.0300		o 131.41.220.0300	
65/25	o 131.45.120.0300		o 131.45.220.0300	
65/32	o 131.46.120.0300		o 131.46.220.0300	
65/40	o 131.47.120.0300		o 131.47.220.0300	
65/50	o 131.48.120.0300		o 131.48.220.0300	
80/25	o 131.60.120.0300		o 131.60.220.0300	
80/32	o 131.61.120.0300		o 131.61.220.0300	
80/40	o 131.62.120.0300		o 131.62.220.0300	
80/50	o 131.63.120.0300		o 131.63.220.0300	
80/65	o 131.64.120.0300		o 131.64.220.0300	
100/50	o 131.72.120.0300		o 131.72.220.0300	
100/65	o 131.73.120.0300		o 131.73.220.0300	
100/80	o 131.75.120.0300		o 131.75.220.0300	
125/50	o 131.82.120.0300		o 131.82.220.0300	
125/65	o 131.83.120.0300		o 131.83.220.0300	
125/80	o 131.85.120.0300		o 131.85.220.0300	
125/100	o 131.86.120.0300		o 131.86.220.0300	
150/65	o 131.94.120.0300		o 131.94.220.0300	
150/80	o 131.96.120.0300		o 131.96.220.0300	
150/100	o 131.97.120.0300		o 131.97.220.0300	
150/125	o 131.98.120.0300		o 131.98.220.0300	
200/65	o 131.9L.120.0300		o 131.9L.220.0300	
200/80	o 131.9N.120.0300		o 131.9N.220.0300	
200/100	o 131.9O.120.0300		o 131.9O.220.0300	
200/125	o 131.9P.120.0300		o 131.9P.220.0300	
200/150	o 131.9Q.120.0300		o 131.9Q.220.0300	
250/80	o 131.B3.120.0300		o 131.B3.220.0300	
250/100	o 131.B4.120.0300		o 131.B4.220.0300	
250/125	o 131.B5.120.0300		o 131.B5.220.0300	
250/150	o 131.B6.120.0300		o 131.B6.220.0300	
250/200	o 131.B7.120.0300		o 131.B7.220.0300	

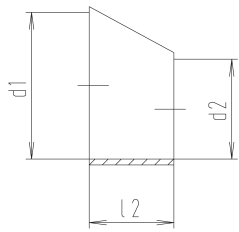
suitable for DIN 11850 series 1 as well

reducer, eccentric, DIN 11852 (for tubing acc. DIN 11850 line 2) (322ex)



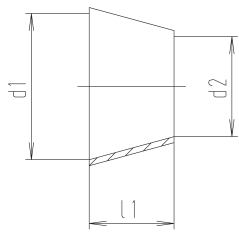
DN	d1	d2	l2	weight (kg)
15/10	16	10	16.5	0,010
20/15	20	16	11	0,010
25/20	26	20	16.5	0,030
32/20	32	20	33	0,030
32/25	32	26	16.5	0,040
40/25	38	26	33	0,050
40/32	38	32	16.5	0,070
50/40	50	38	33	0,070
65/50	66	50	44	0,110
80/65	81	66	41	0,140
100/80	100	81	52.5	0,200
125/100	125	100	68.5	0,280
150/125	150	125	68.5	0,290

reducer, eccentric, DIN 11852 (for tubing acc. DIN 11850 line 2) (322ex)



DN	d1	d2	l2	weight (kg)
15/10	16	10	16.5	0,010
20/15	20	16	11	0,010
25/20	26	20	16.5	0,030
32/20	32	20	33	0,030
32/25	32	26	16.5	0,040
40/25	38	26	33	0,050
40/32	38	32	16.5	0,070
50/40	50	38	33	0,070
65/50	66	50	44	0,110
80/65	81	66	41	0,140
100/80	100	81	52.5	0,200
125/100	125	100	68.5	0,280
150/125	150	125	68.5	0,290

reducer, concentric, inch (322Z)



DN	d1	d2	l1	weight (kg)
1½" / 1"	29.3	22.9	11.5	0,020
1½" / 1"	35.1	22.9	22	0,030
1½" / 1¼"	35.1	29.3	10.5	0,040
2" / 1"	47.8	22.9	45	0,080
2" / 1¼"	47.8	29.3	33	0,080
2" / 1½"	47.8	35.1	23	0,090
2½" / 1"	60.5	22.9	68	0,130
2½" / 1¼"	60.5	29.3	56	0,120
2½" / 1½"	60.5	35.1	45.5	0,110
2½" / 2"	60.5	47.8	23	0,090
3" / 1"	72.1	22.9	89	0,200
3" / 1¼"	72.1	29.3	77	0,180
3" / 1½"	72.1	35.1	67	0,160
3" / 2"	72.1	47.8	44	0,120
3" / 2½"	72.1	60.5	21	0,110
4" / 1"	97.6	22.9	135	0,370
4" / 1¼"	97.6	29.3	123	0,360
4" / 1½"	97.6	35.1	113	0,320
4" / 2"	97.6	47.8	90	0,290
4" / 2½"	97.6	60.5	67	0,240
4" / 3"	97.6	72.1	46	0,170

t-pieces, short, DIN 11852 (for tubing acc. DIN 11850 line 2) (311IN)

DN	304 polished Ident number	304 matt Ident number	316 L polished Ident number	316 L matt Ident number
15/10	○ 132.21.110.0001	○ 132.21.210.0001	○ 132.21.120.0001	○ 132.21.220.0001
20/15	○ 132.23.110.0001	○ 132.23.210.0001	○ 132.23.120.0001	○ 132.23.220.0001
25/20	○ 132.26.110.0001	○ 132.26.210.0001	○ 132.26.120.0001	○ 132.26.220.0001
32/20	○ 132.29.110.0001	○ 132.29.210.0001	○ 132.29.120.0001	○ 132.29.220.0001
32/25	○ 132.30.110.0001	○ 132.30.210.0001	○ 132.30.120.0001	○ 132.30.220.0001
40/25	○ 132.34.110.0001	○ 132.34.210.0001	○ 132.34.120.0001	○ 132.34.220.0001
40/32	○ 132.35.110.0001	○ 132.35.210.0001	○ 132.35.120.0001	○ 132.35.220.0001
50/40	○ 132.41.110.0001	○ 132.41.210.0001	○ 132.41.120.0001	○ 132.41.220.0001
65/50	○ 132.48.110.0001	○ 132.48.210.0001	○ 132.48.120.0001	○ 132.48.220.0001
80/65	○ 132.64.110.0001	○ 132.64.210.0001	○ 132.64.120.0001	○ 132.64.220.0001
100/80	○ 132.75.110.0001	○ 132.75.210.0001	○ 132.75.120.0001	○ 132.75.220.0001
125/100	○ 132.86.110.0001	○ 132.86.210.0001	○ 132.86.120.0001	○ 132.86.220.0001
150/125	○ 132.98.110.0001	○ 132.98.210.0001	○ 132.98.120.0001	○ 132.98.220.0001

suitable for DIN 11850 series 1 as well

t-pieces, short, DIN 11852 (for tubing acc. DIN 11850 line 2) (311IN)

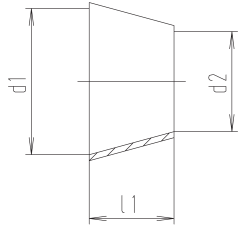
DN	316 L polished Ident number	316 L matt Ident number
15/10	○ 132.21.120.0301	○ 132.21.220.0301
20/15	○ 132.23.120.0301	○ 132.23.220.0301
25/20	○ 132.26.120.0301	○ 132.26.220.0301
32/20	○ 132.29.120.0301	○ 132.29.220.0301
32/25	○ 132.30.120.0301	○ 132.30.220.0301
40/25	○ 132.34.120.0301	○ 132.34.220.0301
40/32	○ 132.35.120.0301	○ 132.35.220.0301
50/40	○ 132.41.120.0301	○ 132.41.220.0301
65/50	○ 132.48.120.0301	○ 132.48.220.0301
80/65	○ 132.64.120.0301	○ 132.64.220.0301
100/80	○ 132.75.120.0301	○ 132.75.220.0301
125/100	○ 132.86.120.0301	○ 132.86.220.0301
150/125	○ 132.98.120.0301	○ 132.98.220.0301

suitable for DIN 11850 series 1 as well

reducer, concentric, inch (322Z)

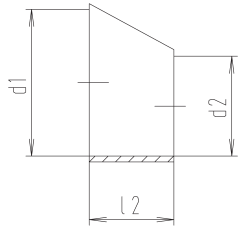
DN	Ident number	Ident number	Ident number	Ident number
1½" / 1"	○ 133.30.110.0000	○ 133.30.210.0000	● 133.30.120.0000	● 133.30.220.0000
1½" / 1"	● 133.34.110.0000	● 133.34.210.0000	● 133.34.120.0000	● 133.34.220.0000
1½" / 1¼"	● 133.35.110.0000	● 133.35.210.0000	● 133.35.120.0000	● 133.35.220.0000
2" / 1"	● 133.39.110.0000	● 133.39.210.0000	● 133.39.120.0000	● 133.39.220.0000
2" / 1¼"	○ 133.40.110.0000	○ 133.40.210.0000	● 133.40.120.0000	● 133.40.220.0000
2" / 1½"	● 133.41.110.0000	● 133.41.210.0000	● 133.41.120.0000	● 133.41.220.0000
2½" / 1"	○ 133.45.110.0000	○ 133.45.210.0000	○ 133.45.120.0000	○ 133.45.220.0000
2½" / 1¼"	○ 133.46.110.0000	○ 133.46.210.0000	○ 133.46.120.0000	○ 133.46.220.0000
2½" / 1½"	● 133.47.110.0000	● 133.47.210.0000	● 133.47.120.0000	● 133.47.220.0000
2½" / 2"	● 133.48.110.0000	● 133.48.210.0000	● 133.48.120.0000	● 133.48.220.0000
3" / 1"	○ 133.52.110.0000	○ 133.52.210.0000	● 133.52.120.0000	● 133.52.220.0000
3" / 1¼"	○ 133.53.110.0000	○ 133.53.210.0000	○ 133.53.120.0000	○ 133.53.220.0000
3" / 1½"	● 133.54.110.0000	● 133.54.210.0000	● 133.54.120.0000	● 133.54.220.0000
3" / 2"	● 133.55.110.0000	● 133.55.210.0000	● 133.55.120.0000	● 133.55.220.0000
3" / 2½"	● 133.56.110.0000	● 133.56.210.0000	● 133.56.120.0000	● 133.56.220.0000
4" / 1"	○ 133.69.110.0000	○ 133.69.210.0000	○ 133.69.120.0000	○ 133.69.220.0000
4" / 1¼"	○ 133.70.110.0000	○ 133.70.210.0000	○ 133.70.120.0000	○ 133.70.220.0000
4" / 1½"	○ 133.71.110.0000	○ 133.71.210.0000	○ 133.71.120.0000	○ 133.71.220.0000
4" / 2"	● 133.72.110.0000	● 133.72.210.0000	● 133.72.120.0000	● 133.72.220.0000
4" / 2½"	● 133.73.110.0000	● 133.73.210.0000	● 133.73.120.0000	● 133.73.220.0000
4" / 3"	● 133.74.110.0000	● 133.74.210.0000	● 133.74.120.0000	● 133.74.220.0000

reducer, concentric, inch (322Z)



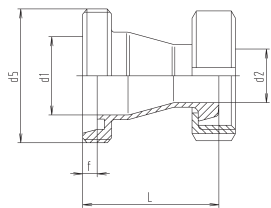
DN	d1	d2	l1	weight (kg)
1/4" / 1"	29.3	22.9	11.5	0,020
1/2" / 1"	35.1	22.9	22	0,030
1/2" / 1/4"	35.1	29.3	10.5	0,040
2" / 1"	47.8	22.9	45	0,080
2" / 1/4"	47.8	29.3	33	0,080
2" / 1/2"	47.8	35.1	23	0,090
2 1/2" / 1"	60.5	22.9	68	0,130
2 1/2" / 1/4"	60.5	29.3	56	0,120
2 1/2" / 1/2"	60.5	35.1	45.5	0,110
2 1/2" / 2"	60.5	47.8	23	0,090
3" / 1"	72.1	22.9	89	0,200
3" / 1/4"	72.1	29.3	77	0,180
3" / 1/2"	72.1	35.1	67	0,160
3" / 2"	72.1	47.8	44	0,120
3" / 2 1/2"	72.1	60.5	21	0,110
4" / 1"	97.6	22.9	135	0,370
4" / 1/4"	97.6	29.3	123	0,360
4" / 1/2"	97.6	35.1	113	0,320
4" / 2"	97.6	47.8	90	0,290
4" / 2 1/2"	97.6	60.5	67	0,240
4" / 3"	97.6	72.1	46	0,170

reducer, eccentric, inch (322zex)



DN	d1	d2	l2	weight (kg)
1/4" / 1"	29.3	22.9	12	0,040
1/2" / 1"	35.1	22.9	23	0,050
1/2" / 1/4"	35.1	29.3	11	0,070
2" / 1"	47.8	22.9	47	0,080
2" / 1/2"	47.8	35.1	24	0,070
2 1/2" / 1/2"	60.5	35.1	48	0,170
2 1/2" / 2"	60.5	47.8	24	0,110
3" / 2"	73.1	47.8	46	0,200
3" / 2 1/2"	73.1	60.5	22	0,130
4" / 2 1/2"	97.6	60.5	70	0,340
4" / 3"	97.6	73.1	48	0,210

reducer, concentric, male/liner, DIN (356)



DN	d1	d2	d5	f	L	weight (kg)
32/25	32	26	58x1/6"	7	55	0,350
40/25	38	26	65x1/6"	7	66	0,450
40/32	38	32	65x1/6"	7	58	0,500
50/32	50	32	78x1/6"	7	81	0,570
50/40	50	38	78x1/6"	7	71	0,640
65/40	66	38	95x1/6"	8	102	0,730
65/50	66	50	95x1/6"	8	82	0,870
80/50	81	50	110x1/4"	8	109	1,050
80/65	81	66	110x1/4"	8	84	1,350
100/65	100	66	130x1/4"	10	123	1,430
100/80	100	81	130x1/4"	10	101	1,100

e-pieces, short, DIN 11852 (for tubing acc. DIN 11850 line 2) (3111N)

DN	316 L polished		316 L matt	
	Ident number	Ident number	Ident number	Ident number
1/4" / 1"	○ 133.30.120.0300	○ 133.30.220.0300	○ 133.34.120.0300	○ 133.34.220.0300
1/2" / 1"	○ 133.35.120.0300	○ 133.35.220.0300	○ 133.39.120.0300	○ 133.39.220.0300
2" / 1"	○ 133.40.120.0300	○ 133.40.220.0300	○ 133.41.120.0300	○ 133.41.220.0300
2" / 1/4"	○ 133.41.120.0300	○ 133.41.220.0300	○ 133.45.120.0300	○ 133.45.220.0300
2" / 1/2"	○ 133.45.120.0300	○ 133.45.220.0300	○ 133.46.120.0300	○ 133.46.220.0300
2 1/2" / 1"	○ 133.47.120.0300	○ 133.47.220.0300	○ 133.48.120.0300	○ 133.48.220.0300
2 1/2" / 1/4"	○ 133.48.120.0300	○ 133.48.220.0300	○ 133.52.120.0300	○ 133.52.220.0300
2 1/2" / 1/2"	○ 133.52.120.0300	○ 133.52.220.0300	○ 133.53.120.0300	○ 133.53.220.0300
2 1/2" / 2"	○ 133.53.120.0300	○ 133.53.220.0300	○ 133.54.120.0300	○ 133.54.220.0300
3" / 1"	○ 133.54.120.0300	○ 133.54.220.0300	○ 133.55.120.0300	○ 133.55.220.0300
3" / 1/4"	○ 133.55.120.0300	○ 133.55.220.0300	○ 133.56.120.0300	○ 133.56.220.0300
3" / 1/2"	○ 133.56.120.0300	○ 133.56.220.0300	○ 133.69.120.0300	○ 133.69.220.0300
3" / 2"	○ 133.69.120.0300	○ 133.69.220.0300	○ 133.70.120.0300	○ 133.70.220.0300
3" / 2 1/2"	○ 133.70.120.0300	○ 133.70.220.0300	○ 133.71.120.0300	○ 133.71.220.0300
4" / 1"	○ 133.71.120.0300	○ 133.71.220.0300	○ 133.72.120.0300	○ 133.72.220.0300
4" / 1/4"	○ 133.72.120.0300	○ 133.72.220.0300	○ 133.73.120.0300	○ 133.73.220.0300
4" / 1/2"	○ 133.73.120.0300	○ 133.73.220.0300	○ 133.74.120.0300	○ 133.74.220.0300
4" / 2"	○ 133.74.120.0300	○ 133.74.220.0300		
4" / 2 1/2"				
4" / 3"				

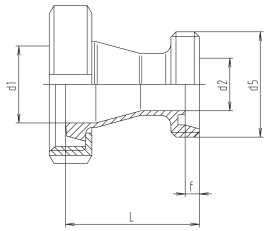
e-pieces, short, DIN 11852 (for tubing acc. DIN 11850 line 2) (3111N)

DN	304 polished		304 matt		316 L polished		316 L matt	
	Ident number	Ident number	Ident number	Ident number	Ident number	Ident number	Ident number	Ident number
1/4" / 1"	○ 134.30.110.0000	○ 134.30.210.0000	○ 134.30.120.0000	○ 134.30.220.0000	○ 134.30.120.0000	○ 134.30.220.0000	○ 134.34.120.0000	○ 134.34.220.0000
1/2" / 1"	● 134.34.110.0000	● 134.34.210.0000	● 134.34.120.0000	● 134.34.220.0000	● 134.34.120.0000	● 134.34.220.0000	● 134.34.120.0000	● 134.34.220.0000
1/2" / 1/4"	○ 134.35.110.0000	○ 134.35.210.0000	○ 134.35.120.0000	○ 134.35.220.0000	○ 134.35.120.0000	○ 134.35.220.0000	○ 134.39.120.0000	○ 134.39.220.0000
2" / 1"	● 134.39.110.0000	● 134.39.210.0000	● 134.39.120.0000	● 134.39.220.0000	● 134.39.120.0000	● 134.39.220.0000	● 134.41.120.0000	● 134.41.220.0000
2" / 1/2"	● 134.41.110.0000	● 134.41.210.0000	● 134.41.120.0000	● 134.41.220.0000	● 134.41.120.0000	● 134.41.220.0000	● 134.47.120.0000	● 134.47.220.0000
2 1/2" / 1/2"	● 134.47.110.0000	● 134.47.210.0000	● 134.47.120.0000	● 134.47.220.0000	● 134.47.120.0000	● 134.47.220.0000	● 134.48.120.0000	● 134.48.220.0000
2 1/2" / 2"	● 134.48.110.0000	● 134.48.210.0000	● 134.48.120.0000	● 134.48.220.0000	● 134.48.120.0000	● 134.48.220.0000	● 134.55.120.0000	● 134.55.220.0000
3" / 2"	● 134.55.110.0000	● 134.55.210.0000	● 134.55.120.0000	● 134.55.220.0000	● 134.55.120.0000	● 134.55.220.0000	○ 134.56.120.0000	○ 134.56.220.0000
3" / 2 1/2"	○ 134.56.110.0000	○ 134.56.210.0000	○ 134.56.120.0000	○ 134.56.220.0000	○ 134.56.120.0000	○ 134.56.220.0000	○ 134.73.120.0000	○ 134.73.220.0000
4" / 2 1/2"	○ 134.73.110.0000	○ 134.73.210.0000	○ 134.73.120.0000	○ 134.73.220.0000	○ 134.73.120.0000	○ 134.73.220.0000	○ 134.74.120.0000	○ 134.74.220.0000
4" / 3"	● 134.74.110.0000	● 134.74.210.0000	○ 134.74.120.0000	○ 134.74.220.0000	○ 134.74.120.0000	○ 134.74.220.0000		

e-pieces, short, DIN 11852 (for tubing acc. DIN 11850 line 2) (3111N)

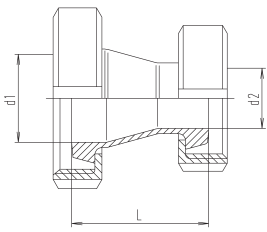
DN	304 polished		304 matt		316 L polished		316 L matt	
	Ident number	Ident number	Ident number	Ident number	Ident number	Ident number	Ident number	Ident number
32/25	● 135.30.110.0020	● 135.30.210.0020	○ 135.30.120.0020	○ 135.30.220.0020	○ 135.34.120.0020	○ 135.34.220.0020	○ 135.35.120.0020	○ 135.35.220.0020
40/25	● 135.34.110.0020	● 135.34.210.0020	○ 135.34.120.0020	○ 135.34.220.0020	○ 135.40.120.0020	○ 135.40.220.0020	○ 135.41.120.0020	○ 135.41.220.0020
40/32	● 135.35.110.0020	● 135.35.210.0020	○ 135.35.120.0020	○ 135.35.220.0020	○ 135.47.120.0020	○ 135.47.220.0020	○ 135.48.120.0020	○ 135.48.220.0020
50/32	● 135.40.110.0020	● 135.40.210.0020	○ 135.40.120.0020	○ 135.40.220.0020	○ 135.63.120.0020	○ 135.63.220.0020	○ 135.64.120.0020	○ 135.64.220.0020
50/40	● 135.41.110.0020	● 135.41.210.0020	○ 135.41.120.0020	○ 135.41.220.0020	○ 135.73.120.0020	○ 135.73.220.0020	○ 135.75.120.0020	○ 135.75.220.0020
65/40	○ 135.47.110.0020	○ 135.47.210.0020	○ 135.47.120.0020	○ 135.47.220.0020	○ 135.75.120.0020	○ 135.75.220.0020		
65/50	● 135.48.110.0020	● 135.48.210.0020	○ 135.48.120.0020	○ 135.48.220.0020				
80/50	● 135.63.110.0020	● 135.63.210.0020	○ 135.63.120.0020	○ 135.63.220.0020				
80/65	● 135.64.110.0020	● 135.64.210.0020	○ 135.64.120.0020	○ 135.64.220.0020				
100/65	○ 135.73.110.0020	○ 135.73.210.0020	○ 135.73.120.0020	○ 135.73.220.0020				
100/80	○ 135.75.110.0020	○ 135.75.210.0020	○ 135.75.120.0020	○ 135.75.220.0020				

reducer, concentric, liner/male, DIN (365)



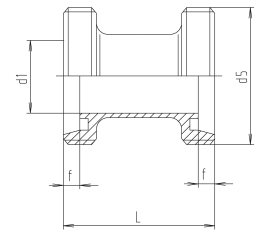
DN	d1	d2	d5	f	l	weight (kg)
32/25	32	26	52x1/6"	7	55	0,430
40/25	38	26	52x1/6"	7	66	0,500
40/32	38	32	58x1/6"	7	58	0,510
50/32	50	32	58x1/6"	7	81	0,650
50/40	50	38	65x1/6"	7	71	0,850
65/40	66	38	65x1/6"	7	101	1,000
65/50	66	50	78x1/6"	7	81	1,050
80/50	81	50	78x1/6"	7	108	1,150
80/65	81	66	95x1/6"	8	84	1,500
100/65	100	66	95x1/6"	8	121	1,920
100/80	100	81	110x1/4"	8	99	1,950

reducer, concentric, liner/liner, DIN (366)



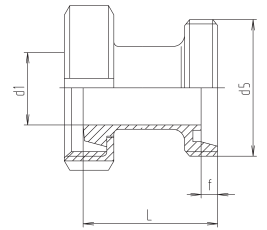
DN	d1	d2	l	weight (kg)
32/25	32	26	48	0,450
40/25	38	26	59	0,670
40/32	38	32	51	0,720
50/32	50	32	74	0,970
50/40	50	38	64	1,030
65/40	66	38	94	1,500
65/50	66	50	74	1,340
80/50	81	50	101	1,650
80/65	81	66	76	1,970
100/65	100	66	113	2,000
100/80	100	81	91	2,420

adapter, male/male, DIN 11851 (370)



DN	d1	d5	f	l	weight (kg)
10	10	28x1/8"	4	42	0,090
15	16	34x1/8"	4	42	0,110
20	20	44x1/6"	6	48	0,210
25	26	52x1/6"	7	58	0,280
32	32	58x1/6"	7	64	0,360
40	38	65x1/6"	7	66	0,460
50	50	78x1/6"	7	70	0,670
65	66	95x1/6"	8	80	1,060
80	81	110x1/4"	8	90	1,410
100	100	130x1/4"	10	108	2,130

adapter, male/liner, DIN 11851 (371)



DN	d1	d5	f	l	weight (kg)
10	10	28x1/8"	4	38	0,130
15	16	34x1/8"	4	38	0,160
20	20	44x1/6"	6	42	0,280
25	26	52x1/6"	7	51	0,390
32	32	58x1/6"	7	57	0,470
40	38	65x1/6"	7	59	0,550
50	50	78x1/6"	7	63	0,770
65	66	95x1/6"	8	72	1,240
80	81	110x1/4"	8	82	1,730
100	100	130x1/4"	10	98	2,400

t-pieces, short, DIN 11852 (for tubing acc. DIN 11850 line 2) (311IN)

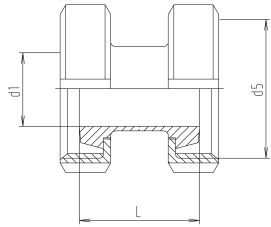
DN	304 polished Ident number	304 matt Ident number	316 L polished Ident number	316 L matt Ident number
32/25	● 135.30.110.0030	● 135.30.210.0030	○ 135.30.120.0030	○ 135.30.220.0030
40/25	● 135.34.110.0030	● 135.34.210.0030	○ 135.34.120.0030	○ 135.34.220.0030
40/32	● 135.35.110.0030	● 135.35.210.0030	○ 135.35.120.0030	○ 135.35.220.0030
50/32	● 135.40.110.0030	● 135.40.210.0030	○ 135.40.120.0030	○ 135.40.220.0030
50/40	● 135.41.110.0030	● 135.41.210.0030	● 135.41.120.0030	● 135.41.220.0030
65/40	○ 135.47.110.0030	○ 135.47.210.0030	○ 135.47.120.0030	○ 135.47.220.0030
65/50	● 135.48.110.0030	● 135.48.210.0030	○ 135.48.120.0030	○ 135.48.220.0030
80/50	● 135.63.110.0030	● 135.63.210.0030	○ 135.63.120.0030	○ 135.63.220.0030
80/65	● 135.64.110.0030	● 135.64.210.0030	○ 135.64.120.0030	○ 135.64.220.0030
100/65	● 135.73.110.0030	● 135.73.210.0030	○ 135.73.120.0030	○ 135.73.220.0030
100/80	● 135.75.110.0030	● 135.75.210.0030	○ 135.75.120.0030	○ 135.75.220.0030

DN	304 polished Ident number	304 matt Ident number	316 L polished Ident number	316 L matt Ident number
32/25	○ 135.30.110.0040	○ 135.30.210.0040	○ 135.30.120.0040	○ 135.30.220.0040
40/25	○ 135.34.110.0040	○ 135.34.210.0040	○ 135.34.120.0040	○ 135.34.220.0040
40/32	○ 135.35.110.0040	○ 135.35.210.0040	○ 135.35.120.0040	○ 135.35.220.0040
50/32	○ 135.40.110.0040	○ 135.40.210.0040	○ 135.40.120.0040	○ 135.40.220.0040
50/40	● 135.41.110.0040	● 135.41.210.0040	○ 135.41.120.0040	○ 135.41.220.0040
65/40	○ 135.47.110.0040	○ 135.47.210.0040	○ 135.47.120.0040	○ 135.47.220.0040
65/50	● 135.48.110.0040	● 135.48.210.0040	○ 135.48.120.0040	○ 135.48.220.0040
80/50	○ 135.63.110.0040	○ 135.63.210.0040	○ 135.63.120.0040	○ 135.63.220.0040
80/65	○ 135.64.110.0040	○ 135.64.210.0040	○ 135.64.120.0040	○ 135.64.220.0040
100/65	○ 135.73.110.0040	○ 135.73.210.0040	○ 135.73.120.0040	○ 135.73.220.0040
100/80	○ 135.75.110.0040	○ 135.75.210.0040	○ 135.75.120.0040	○ 135.75.220.0040

DN	304 polished Ident number	304 matt Ident number	316 L polished Ident number	316 L matt Ident number
10	○ 199.04.110.0000	○ 199.04.210.0000	○ 199.04.120.0000	○ 199.04.220.0000
15	○ 199.06.110.0000	○ 199.06.210.0000	○ 199.06.120.0000	○ 199.06.220.0000
20	○ 199.07.110.0000	○ 199.07.210.0000	○ 199.07.120.0000	○ 199.07.220.0000
25	○ 199.08.110.0000	○ 199.08.210.0000	○ 199.08.120.0000	○ 199.08.220.0000
32	○ 199.09.110.0000	○ 199.09.210.0000	○ 199.09.120.0000	○ 199.09.220.0000
40	● 199.10.110.0000	● 199.10.210.0000	○ 199.10.120.0000	○ 199.10.220.0000
50	● 199.11.110.0000	● 199.11.210.0000	○ 199.11.120.0000	○ 199.11.220.0000
65	○ 199.12.110.0000	○ 199.12.210.0000	○ 199.12.120.0000	○ 199.12.220.0000
80	○ 199.14.110.0000	○ 199.14.210.0000	○ 199.14.120.0000	○ 199.14.220.0000
100	○ 199.15.110.0000	○ 199.15.210.0000	○ 199.15.120.0000	○ 199.15.220.0000

DN	304 polished Ident number	304 matt Ident number	316 L polished Ident number	316 L matt Ident number
10	○ 199.04.110.0001	○ 199.04.210.0001	○ 199.04.120.0001	○ 199.04.220.0001
15	○ 199.06.110.0001	○ 199.06.210.0001	○ 199.06.120.0001	○ 199.06.220.0001
20	○ 199.07.110.0001	○ 199.07.210.0001	○ 199.07.120.0001	○ 199.07.220.0001
25	○ 199.08.110.0001	○ 199.08.210.0001	○ 199.08.120.0001	○ 199.08.220.0001
32	○ 199.09.110.0001	○ 199.09.210.0001	○ 199.09.120.0001	○ 199.09.220.0001
40	○ 199.10.110.0001	○ 199.10.210.0001	○ 199.10.120.0001	○ 199.10.220.0001
50	○ 199.11.110.0001	○ 199.11.210.0001	○ 199.11.120.0001	○ 199.11.220.0001
65	○ 199.12.110.0001	○ 199.12.210.0001	○ 199.12.120.0001	○ 199.12.220.0001
80	○ 199.14.110.0001	○ 199.14.210.0001	○ 199.14.120.0001	○ 199.14.220.0001
100	○ 199.15.110.0001	○ 199.15.210.0001	○ 199.15.120.0001	○ 199.15.220.0001

adapter, liner/liner, DIN 11851 (372)

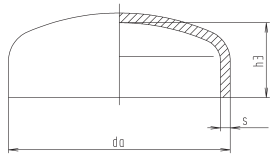


DN	d1	d5	l	weight (kg)
10	10	28x1/8"	34	0,180
15	16	34x1/8"	34	0,220
20	20	44x1/6"	36	0,380
25	26	52x1/6"	44	0,540
32	32	58x1/6"	50	0,660
40	38	65x1/6"	52	0,760
50	50	78x1/6"	56	1,060
65	66	95x1/6"	64	1,720
80	81	110x1/4"	74	2,360
100	100	130x1/4"	88	3,380

t-pieces, short, DIN 11852 (for tubing acc. DIN 11850 line 2) (311IN)

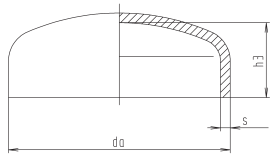
DN	304 polished Ident number	304 matt Ident number	316 L polished Ident number	316 L matt Ident number
10	○ 199.04.110.0002	○ 199.04.210.0002	○ 199.04.120.0002	○ 199.04.220.0002
15	○ 199.06.110.0002	○ 199.06.210.0002	○ 199.06.120.0002	○ 199.06.220.0002
20	○ 199.07.110.0002	○ 199.07.210.0002	○ 199.07.120.0002	○ 199.07.220.0002
25	○ 199.08.110.0002	○ 199.08.210.0002	○ 199.08.120.0002	○ 199.08.220.0002
32	○ 199.09.110.0002	○ 199.09.210.0002	○ 199.09.120.0002	○ 199.09.220.0002
40	● 199.10.110.0002	● 199.10.210.0002	○ 199.10.120.0002	○ 199.10.220.0002
50	● 199.11.110.0002	● 199.11.210.0002	○ 199.11.120.0002	○ 199.11.220.0002
65	○ 199.12.110.0002	○ 199.12.210.0002	○ 199.12.120.0002	○ 199.12.220.0002
80	○ 199.14.110.0002	○ 199.14.210.0002	○ 199.14.120.0002	○ 199.14.220.0002
100	○ 199.15.110.0002	○ 199.15.210.0002	○ 199.15.120.0002	○ 199.15.220.0002

convex bottom, DIN 28011 (for tubing acc. DIN 11850 line 2) (904)



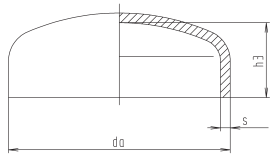
DN	d0	h3	s	weight (kg)
25	23	10	1.5	0,010
32	35	11.5	1.5	0,020
40	41	12.5	1.5	0,020
50	53	15.5	1.5	0,030
65	70	19.5	2	0,080
80	85	22.5	2	0,120
100	104	26.5	2	0,200
125	129	31	2	0,280
150	154	36	2	0,650
200	204	46	2	1,160
250	254	59.5	2	1,600

convex bottom, DIN 28011 (for tubing acc. DIN 11850 line 2) (904)



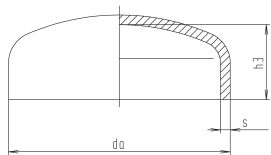
DN	d0	h3	s	weight (kg)
25	23	10	1.5	0,010
32	35	11.5	1.5	0,020
40	41	12.5	1.5	0,020
50	53	15.5	1.5	0,030
65	70	19.5	2	0,080
80	85	22.5	2	0,120
100	104	26.5	2	0,200
125	129	31	2	0,280
150	154	36	2	0,650
200	204	46	2	1,160
250	254	59.5	2	1,600

convex bottom, DIN 28011 (for tubing similar DIN 11850) (904)



DN	d0	h3	s	weight (kg)
25	28	10	1.5	0,010
32	34	11.5	1.5	0,020
40	40	12.5	1.5	0,020
50	52	15.5	1.5	0,030

convex bottom, DIN 28011 (for tubing similar DIN 11850) (904)



DN	d0	h3	s	weight (kg)
25	28	10	1.5	0,010
32	34	11.5	1.5	0,020
40	40	12.5	1.5	0,020
50	52	15.5	1.5	0,030

t-pieces, short, DIN 11852 (for tubing acc. DIN 11850 line 2) (311IN)

DN	304 polished		304 matt		316 L polished		316 L matt	
	Ident number		Ident number		Ident number		Ident number	
25	○ 181.08.110.0014	○ 181.08.210.0014	● 181.08.120.0014	○ 181.08.220.0014	○ 181.09.120.0014	○ 181.09.220.0014	○ 181.10.120.0014	○ 181.10.220.0014
32	○ 181.09.110.0014	○ 181.09.210.0014	○ 181.09.120.0014	○ 181.09.220.0014	○ 181.10.120.0014	○ 181.10.220.0014	○ 181.11.120.0014	○ 181.11.220.0014
40	○ 181.10.110.0014	○ 181.10.210.0014	○ 181.10.120.0014	○ 181.10.220.0014	○ 181.11.120.0014	○ 181.11.220.0014	○ 181.12.120.0003	○ 181.12.220.0003
50	○ 181.11.110.0014	○ 181.11.210.0014	○ 181.11.120.0003	○ 181.11.220.0003	○ 181.12.120.0003	○ 181.12.220.0003	○ 181.13.120.0003	○ 181.13.220.0003
65	● 181.12.110.0003	● 181.12.210.0003	● 181.12.120.0003	● 181.12.220.0003	● 181.13.120.0003	● 181.13.220.0003	● 181.14.120.0003	● 181.14.220.0003
80	● 181.14.110.0003	● 181.14.210.0003	● 181.14.120.0003	● 181.14.220.0003	● 181.15.120.0003	● 181.15.220.0003	● 181.16.120.0003	● 181.16.220.0003
100	● 181.15.110.0003	● 181.15.210.0003	● 181.15.120.0003	● 181.15.220.0003	● 181.16.120.0003	● 181.16.220.0003	● 181.17.120.0003	● 181.17.220.0003
125	● 181.16.110.0003	● 181.16.210.0003	● 181.16.120.0003	● 181.16.220.0003	● 181.17.120.0003	● 181.17.220.0003	● 181.18.120.0003	● 181.18.220.0003
150	● 181.17.110.0003	● 181.17.210.0003	● 181.17.120.0003	● 181.17.220.0003	● 181.18.120.0003	● 181.18.220.0003	● 181.19.120.0003	● 181.19.220.0003
200	● 181.18.110.0003	● 181.18.210.0003	● 181.18.120.0003	● 181.18.220.0003	● 181.19.120.0003	● 181.19.220.0003		
250	● 181.19.110.0003	● 181.19.210.0003	● 181.19.120.0003	● 181.19.220.0003				

t-pieces, short, DIN 11852 (for tubing acc. DIN 11850 line 2) (311IN)

DN	316 L polished		316 L matt	
	Ident number		Ident number	
25	○ 181.08.120.0314	○ 181.08.220.0314		
32	○ 181.09.120.0314	○ 181.09.220.0314		
40	○ 181.10.120.0314	○ 181.10.220.0314		
50	○ 181.11.120.0314	○ 181.11.220.0314		
65	○ 181.12.120.0303	○ 181.12.220.0303		
80	○ 181.14.120.0303	○ 181.14.220.0303		
100	○ 181.15.120.0303	○ 181.15.220.0303		
125	○ 181.16.120.0303	○ 181.16.220.0303		
150	○ 181.17.120.0303	○ 181.17.220.0303		
200	○ 181.18.120.0303	○ 181.18.220.0303		
250	○ 181.19.120.0303	○ 181.19.220.0303		

t-pieces, short, DIN 11852 (for tubing acc. DIN 11850 line 2) (311IN)

DN	304 polished		304 matt		316 L polished		316 L matt	
	Ident number		Ident number		Ident number		Ident number	
25	● 181.08.110.0003	● 181.08.210.0003	● 181.08.120.0003	● 181.08.220.0003				
32	● 181.09.110.0003	● 181.09.210.0003	● 181.09.120.0003	● 181.09.220.0003				
40	● 181.10.110.0003	● 181.10.210.0003	● 181.10.120.0003	● 181.10.220.0003				
50	● 181.11.110.0003	● 181.11.210.0003	● 181.11.120.0003	● 181.11.220.0003				

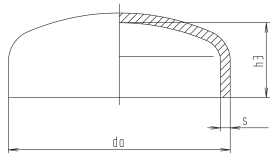
from DN 65 series 2

t-pieces, short, DIN 11852 (for tubing acc. DIN 11850 line 2) (311IN)

DN	316 L polished		316 L matt	
	Ident number		Ident number	
25	○ 181.08.120.0303	○ 181.08.220.0303		
32	○ 181.09.120.0303	○ 181.09.220.0303		
40	○ 181.10.120.0303	○ 181.10.220.0303		
50	○ 181.11.120.0303	○ 181.11.220.0303		

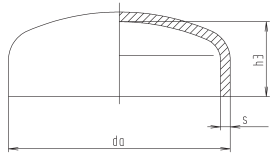
from DN 65 series 2

convex bottom, DIN 28011 inch (904Z)



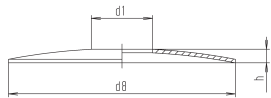
DN	d0	h3	s	weight (kg)
1"	25.4	14	1.5	0,010
1½"	38.1	18	1.5	0,020
2"	50.8	13.5	1.5	0,030
2½"	63.5	16.5	1.5	0,080
3"	76.1	18	2	0,120
4"	101.6	23	2	0,200

convex bottom, DIN 28011 ISO (904I)



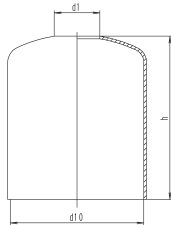
DN	d0	h3	s	weight (kg)
25	33.7	18	2	0,031
32	42.4	20	2	0,048
40	48.3	20	2	0,058
50	60.3	25	2	0,087
65	76.1	26	2	0,130
80	88.9	38	2	0,210
100	114.3	28.5	2	0,320
125	139.7	47	2	0,440
150	168.3	40	2	0,750
200	219.1	62	2	1,350

rosette (for tubing acc. DIN 11850 line I) (901)



DN	d1	d8	h	weight (kg)
15	18.5	128	8	0,120
20	22.5	128	8	0,120
25	28.5	128	8	0,110
32	34.5	128	8	0,110
40	40.5	128	8	0,100
50	52.5	128	6	0,100
65	70.5	128	6	0,130
80	85.5	186	10	0,150
100	104.5	186	10	0,190

cover for tubing, high (for tubing acc. DIN 11850 line I) (902)



DN	d1	d10	h	weight (kg)
25	28.2	81	140	0,640
32	34.2	100	140	0,660
40	40.2	100	140	0,650
50	52.2	125	140	0,630
65	70.3	125	140	0,810
80	85.3	125	145	1,140
100	104.3	150	200	2,120
125	129.5	200	250	2,600
150	154.5	200	246	2,950

t-pieces, short, DIN 11852 (for tubing acc. DIN 11850 line 2) (311IN)

DN	304 polished Ident number	304 matt Ident number	316 L polished Ident number	316 L matt Ident number
1"	○ 181.08.110.0004	○ 181.08.210.0004	○ 181.08.120.0004	○ 181.08.220.0004
1½"	○ 181.10.110.0004	○ 181.10.210.0004	○ 181.10.120.0004	○ 181.10.220.0004
2"	● 181.11.110.0004	● 181.11.210.0004	● 181.11.120.0004	● 181.11.220.0004
2½"	○ 181.12.110.0004	○ 181.12.210.0004	● 181.12.120.0004	● 181.12.220.0004
3"	● 181.13.110.0004	○ 181.13.210.0004	○ 181.13.120.0004	● 181.13.220.0004
4"	● 181.15.110.0004	● 181.15.210.0004	● 181.15.120.0004	● 181.15.220.0004

DN	304 polished Ident number	304 matt Ident number	316 L polished Ident number	316 L matt Ident number
25	○ 181.08.110.0009	○ 181.08.210.0009	○ 181.08.120.0009	○ 181.08.220.0009
32	○ 181.09.110.0009	○ 181.09.210.0009	○ 181.09.120.0009	○ 181.09.220.0009
40	○ 181.10.110.0009	○ 181.10.210.0009	○ 181.10.120.0009	○ 181.10.220.0009
50	○ 181.11.110.0009	○ 181.11.210.0009	○ 181.11.120.0009	○ 181.11.220.0009
65	○ 181.12.110.0009	○ 181.12.210.0009	○ 181.12.120.0009	○ 181.12.220.0009
80	○ 181.14.110.0009	○ 181.14.210.0009	○ 181.14.120.0009	○ 181.14.220.0009
100	○ 181.15.110.0009	○ 181.15.210.0009	○ 181.15.120.0009	○ 181.15.220.0009
125	○ 181.16.110.0009	○ 181.16.210.0009	○ 181.16.120.0009	○ 181.16.220.0009
150	○ 181.17.110.0009	○ 181.17.210.0009	○ 181.17.120.0009	○ 181.17.220.0009
200	○ 181.18.110.0009	○ 181.18.210.0009	○ 181.18.120.0009	○ 181.18.220.0009

DN	304 polished Ident number	304 matt Ident number
15	○ 181.06.110.0000	○ 181.06.210.0000
20	○ 181.07.110.0000	○ 181.07.210.0000
25	● 181.08.110.0000	● 181.08.210.0000
32	● 181.09.110.0000	● 181.09.210.0000
40	● 181.10.110.0000	● 181.10.210.0000
50	● 181.11.110.0000	● 181.11.210.0000
65	● 181.12.110.0000	● 181.12.210.0000
80	● 181.14.110.0000	● 181.14.210.0000
100	● 181.15.110.0000	● 181.15.210.0000

DN	304 polished Ident number	304 matt Ident number
25	● 181.08.110.0001	● 181.08.210.0001
32	● 181.09.110.0001	● 181.09.210.0001
40	● 181.10.110.0001	○ 181.10.210.0001
50	● 181.11.110.0001	○ 181.11.210.0001
65	● 181.12.110.0001	○ 181.12.210.0001
80	● 181.14.110.0001	○ 181.14.210.0001
100	● 181.15.110.0001	● 181.15.210.0001
125	○ 181.16.110.0001	○ 181.16.210.0001
150	○ 181.17.110.0001	○ 181.17.210.0001